



A FOUR BEDROOM DETACHED BUNGALOW IN A POPULAR LOCATION

Hillside Road, Northwood, Middlesex HA6 1QB

ROBSONS

A FOUR BEDROOM DETACHED BUNGALOW IN A POPULAR LOCATION

Hillside Road, Northwood, Middlesex HA6 1QB

GOOD SIZED LOUNGE • FULLY EQUIPPED KITCHEN • LARGE CONSERVATORY • FOUR BEDROOMS • THREE BATHROOMS • LARGE LANDSCAPED SOUTH-WEST GARDEN WITH DECKING • NO ONWARD CHAIN

Description

Positioned on a popular residential road is this substantial detached chalet bungalow which has been skilfully extended and refurbished to a high standard to provide four bedrooms and three bathrooms.

On the ground floor is an enclosed porch leading to the hallway then lounge featuring a fireplace. Alongside is a modern kitchen leading to a large conservatory with an insulated roof and air conditioning overlooking a South-West facing garden, two double bedrooms, one with en-suite and a family bathroom. Upstairs are two further bedrooms, one with a spacious four piece en-suite. The newly installed front drive has space for four cars. The South-West facing garden is landscaped to offer a manicured lawn with a well lit decking area along with a summer house and storage.





Location

Northwood provides a range of shopping facilities including Waitrose supermarket, a variety of restaurants and other amenities with the Metropolitan Line station providing access to Baker Street and the City. There is a plethora of state and private schooling together with a wide choice of recreational facilities, which include golf courses and fitness centres. The M1, M40 and M25 motorways are also accessible.

Additional Information

Tenure: Freehold

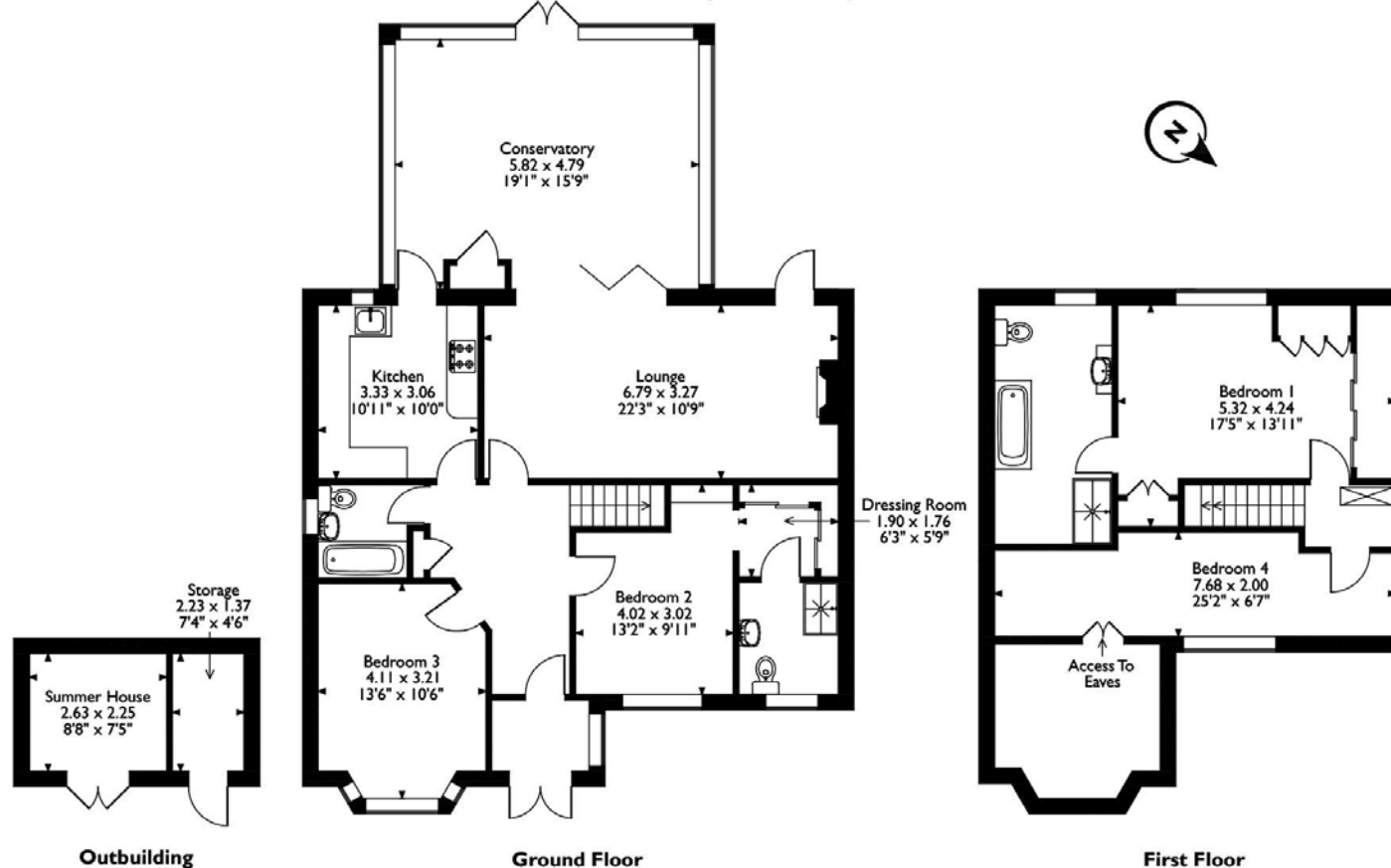
Local Authority: London Borough of Hillingdon

Council Tax: Band F

Energy Efficiency Rating: Band D



Hillside Road, Northwood, Middlesex
 Approximate Gross Internal Area
 Main House = 161 Sq M/1733 Sq Ft
 Outbuilding = 9 Sq M/97 Sq Ft
 Total = 170 Sq M/1830 Sq Ft



Please note that the location of doors, windows and other items are approximate and this floorplan is to be used for illustrative purposes only. Unauthorized reproduction is prohibited.

ROBSONS

Address: 7 Clive Parade, Northwood, Middlesex HA6 2QF
 Tel: 01923 835355 northwood@robsonswb.com

www.robsonswb.com

www.
 the
 londonoffice.co.uk
 40 ST JAMES'S PLACE SW1

Important notice: Robsons, their clients and any joint agents give notice that 1: They are not authorised to make or give any representations or warranties in relation to the property either here or elsewhere, either on their own behalf or on behalf of their client or otherwise. They assume no responsibility for any statement that may be made in these particulars. These particulars do not form part of any offer or contract and must not be relied upon as statements or representations of fact. 2: Any areas, measurements or distances are approximate. Plot sizes and dimensions are taken from Promap and are approximate. The text, photographs and plans are for guidance only and are not necessarily comprehensive. It should not be assumed that the property has all necessary planning, building regulation or other consents and Robsons have not tested any services, equipment or facilities. Purchasers must satisfy themselves by inspection or otherwise.