



THREE BEDROOM FAMILY HOME SITUATED IN A CONVENIENT LOCATION

Chiltern Drive, Mill End, Rickmansworth, Hertfordshire WD3 8JY

ROBSONS

THREE BEDROOM FAMILY HOME SITUATED IN A CONVENIENT LOCATION

Chiltern Drive, Mill End, Rickmansworth
Hertfordshire WD3 8JY

**ENTRANCE HALL • CLOAKROOM • THROUGH
SITTING/DINING ROOM • KITCHEN • THREE
BEDROOMS • BATHROOM • EXTENSIVE REAR
GARDEN • OFF STREET PARKING**

Description

This three bedroom family home has well presented accommodation with convenient off street parking to the front.

To the ground floor is a welcoming entrance hall with stairs to the first floor and a guest cloakroom. The through sitting/ dining room has two separate access doors, together with an open archway connecting the rooms, making this a light and bright room with patio doors to the rear garden. There is a modern kitchen, fitted with a range of light wood units providing ample storage space, with integrated appliances and also room for free standing items, There is also a door to the rear garden.





To the first floor are three bedrooms and the family bathroom.

The property is approached via an own driveway, providing off street parking. The rear garden has an extensive lawn with hedge borders, together with a gravel and decked patio area for outside entertaining.

Location

Rickmansworth town centre has a wide range of boutique shops, coffee houses, restaurants and major supermarkets. The Metropolitan and Chiltern line train services connect you to London Baker Street, Marylebone Station and beyond. The M25 motorway is available at both junction 17 and 18, connecting you to the national motorway network. Major London airports are also within reach. The area is well served for good quality private and state schools for all ages. Chorleywood and Rickmansworth offer everything for the sporting individual from rugby, cricket, football, tennis, horse riding and golf. Rickmansworth Aquadrome is an ideal setting for walks, sailing, fishing and water skiing.

Additional Information

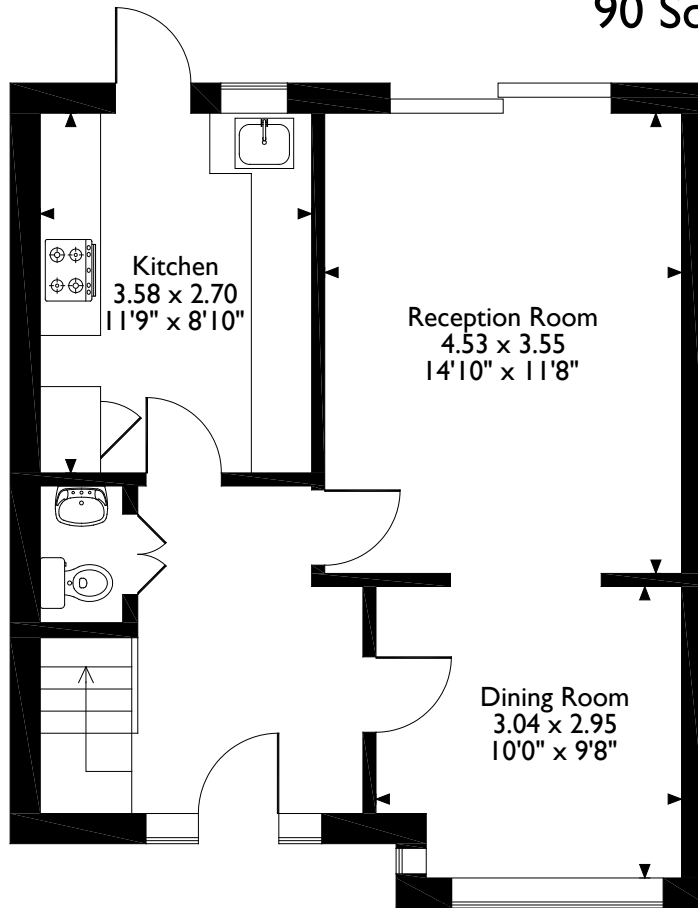
Tenure: Freehold

Local Authority: Three Rivers District Council

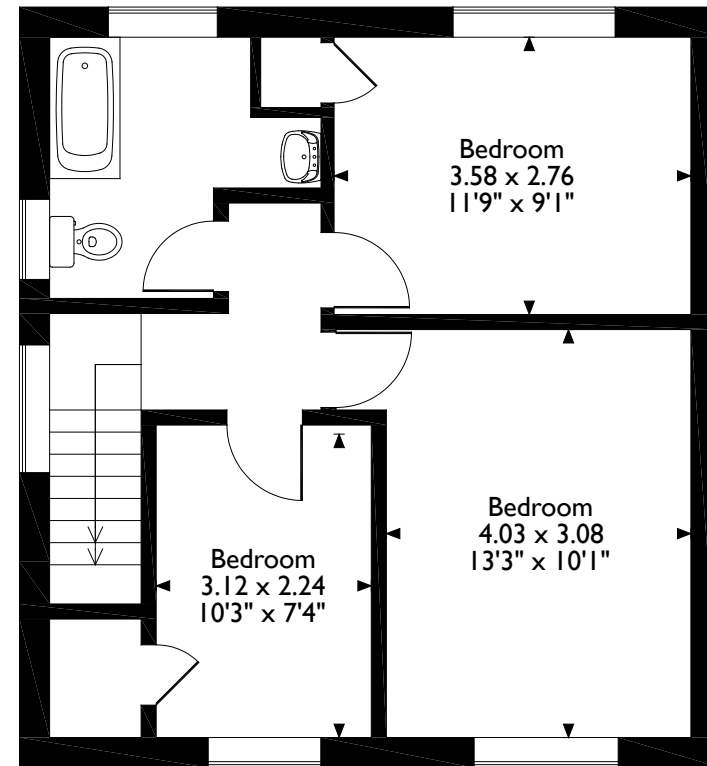
Energy Efficiency Rating: Band D



Chiltern Drive Mill End, Rickmansworth
Approximate Gross Internal Area
90 Sq M/969 Sq Ft



Ground Floor



First Floor

Please note that the location of doors, windows and other items are approximate and this floorplan is to be used for illustrative purposes only. Unauthorized reproduction is prohibited.

ROBSONS

130 High Street, Rickmansworth, Hertfordshire WD3 8JY
Tel: 01923 777762 rickmansworth@robsonswb.com

www.robsonswb.com

www.the-londonoffice.co.uk
40 ST JAMES'S PLACE SW1