



WELL PRESENTED TWO BEDROOM, TWO BATHROOM HOME WITH STUNNING VIEWS

Byewaters, Watford, Hertfordshire, WD18 8WJ

ROBSONS

WELL PRESENTED TWO BEDROOM, TWO BATHROOM HOME WITH STUNNING VIEWS

Byewaters, Watford, Hertfordshire, WD18 8WJ

- KITCHEN
- RECEPTION ROOM
- GUEST CLOAKROOM
- TWO BEDROOMS, BOTH WITH EN-SUITES
- FRONT GARDEN
- REAR GARDEN
- TWO ALLOCATED PARKING SPACES
- STUNNING VIEWS
- NO ONWARD CHAIN

Description

This well presented two bedroom, two bathroom property has stunning views and has the benefit of no onward chain.

The property comprises of an entrance hall leading to the fitted kitchen, which has ample storage, a gas hob and an electric oven.

The carpeted reception room has a feature fireplace and patio doors opening to the easy to maintain rear garden, which has close boarded fencing.





To the first floor is the principal bedroom which has fitted wardrobes and an en-suite bathroom. The second bedroom also has an en-suite shower room.

The property has the advantage of two allocated parking spaces, together with both internal and external storage cupboards

PERSONAL INTEREST: We hereby disclose that a Personal Interest exists which constitutes a Declarable Interest under the Estate Agents Act 1979.

Location

The Byewaters is adjacent to picturesque Croxley Green, providing the perfect backdrop as it offers village charm in the rural suburbs of Hertfordshire. The property is within easy reach of Croxley Green and Rickmansworth town centres with its wide range of boutique shops, coffee houses, restaurants and the major supermarkets. The Metropolitan and Chiltern line train services connects you to London Baker Street, Marylebone Station and beyond. The M25 motorway is available at both junctions 17 and 18 connecting you to the national motorway network. Major London airports are also within reach. The area is well served for good quality private and state schools for all ages.

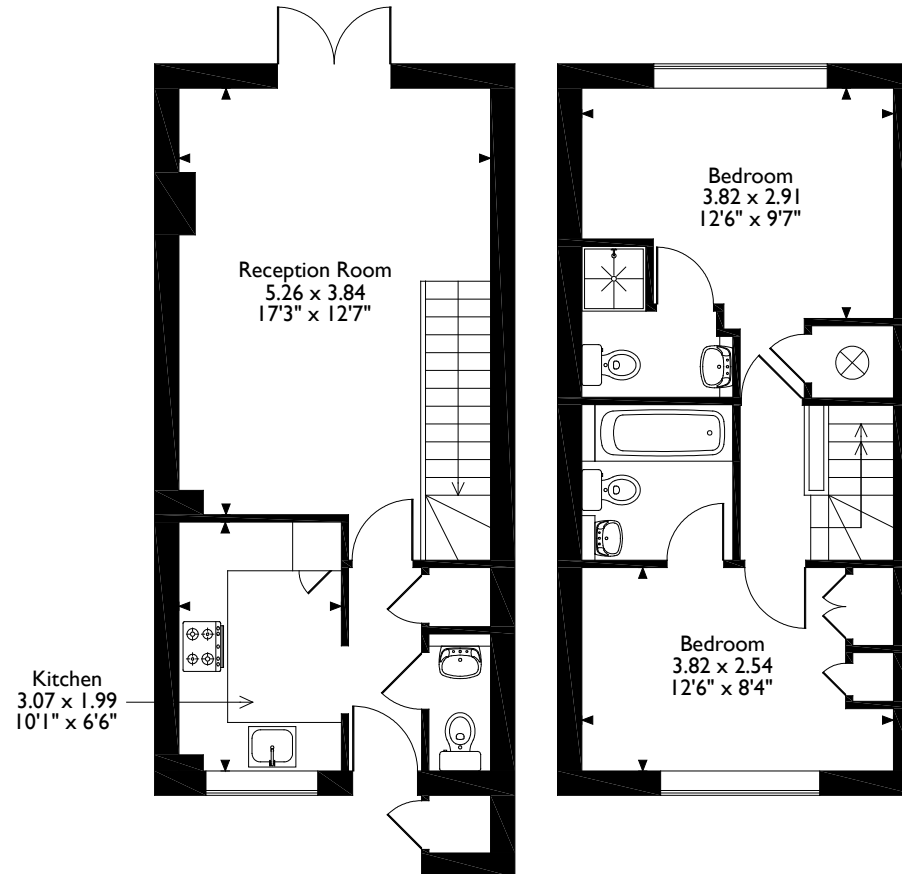
Tenure: Freehold

Local Authority: Watford Borough Council

Energy Efficiency Rating: Band C



Byewaters, Watford, Hertfordshire
Approximate Gross Internal Area
64 Sq M/688 Sq Ft



Ground Floor

First Floor

Please note that the location of doors, windows and other items are approximate and this floorplan is to be used for illustrative purposes only. Unauthorized reproduction is prohibited.

ROBSONS

130 High Street, Rickmansworth, Hertfordshire, WD3 1AB
Tel: 01923 777762 Email: rickmansworth@robsonswb.com

www.robsonswb.com

www.
the
londonoffice.co.uk
40 ST JAMES'S PLACE SW1

Important notice: Robsons, their clients and any joint agents give notice that 1: They are not authorised to make or give any representations or warranties in relation to the property either here or elsewhere, either on their own behalf or on behalf of their client or otherwise. They assume no responsibility for any statement that may be made in these particulars. These particulars do not form part of any offer or contract and must not be relied upon as statements or representations of fact. 2: Any areas, measurements or distances are approximate. Plot sizes and dimensions are taken from Promap and are approximate. The text, photographs and plans are for guidance only and are not necessarily comprehensive. It should not be assumed that the property has all necessary planning, building regulation or other consents and Robsons have not tested any services, equipment or facilities. Purchasers must satisfy themselves by inspection or otherwise.