



## A ONE BEDROOM SECOND FLOOR APARTMENT IN THE HEART OF NORTHWOOD

Leaf Close, Northwood, Middlesex, HA6 2YY

**ROBSONS**



Leaf Close, Northwood, Middlesex, HA6 2YY

**SECOND FLOOR • ONE BEDROOM • FITTED  
KITCHEN • MODERN BATHROOM • SPACIOUS  
RECEPTION ROOM WITH BALCONY •  
RESIDENTS PARKING • MOMENTS FROM  
NORTHWOOD TOWN AND STATION**

### Description

A large one double bedroom second floor apartment, located within a moments' walk of Northwood town centre and the Metropolitan Line tube station.

This well presented apartment comprises entrance hallway, kitchen, spacious reception room with a balcony, double bedroom and a modern bathroom.

Further benefits include resident's parking.







Northwood provides a range of shopping facilities including Waitrose supermarket, a variety of restaurants and other amenities with the Metropolitan Line station providing access to Baker Street and the City. There is a plethora of state and private schooling together with a wide choice of recreational facilities, which include golf courses and fitness centres. The M1, M40 and M25 motorways are also accessible.

NB this property is situated within the proximity of the ULEZ, if your vehicle does not comply charges may apply.

*\*Disclaimer\** Please note the photographs displayed are not current.

### **Additional Information**

Tenure: Leasehold

Lease Length: 125 years from 16th July 1984

Service Charge and Ground rent: £720 p/a combined (£60 p/m)

Local Authority: London Borough of Hillingdon

Council Tax Band: C

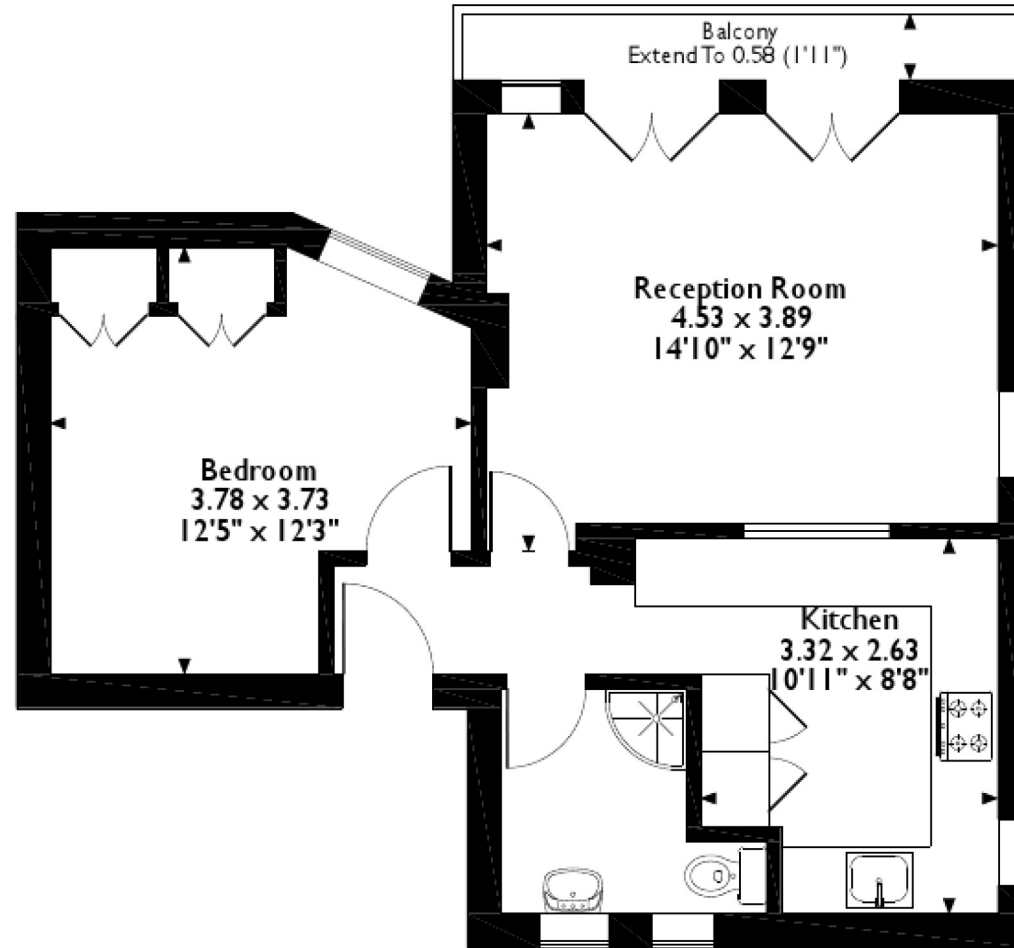
Energy Efficiency Rating: C

For additional information, please refer to [www.robsonswb.com](http://www.robsonswb.com) or call us on: 01923 835355.





Leaf Close, Northwood  
Approximate Gross Internal Area  
46 Sq M/495 Sq Ft



**Second Floor**

Please note that the location of doors, windows and other items are approximate and this floorplan is to be used for illustrative purposes only. Unauthorized reproduction is prohibited.

**ROBSONS**

7 Clive Parade, Northwood, HA6 2QF  
Tel: 01923 835355 Email: northwood@robsonswb.com  
[www.robsonswb.com](http://www.robsonswb.com)

SCAN TO VISIT



OUR WEBSITE

Important notice: Robsons, their clients and any joint agents give notice that 1: They are not authorised to make or give any representations or warranties in relation to the property either here or elsewhere, either on their own behalf or on behalf of their client or otherwise. They assume no responsibility for any statement that may be made in these particulars. These particulars do not form part of any offer or contract and must not be relied upon as statements or representations of fact. 2: Any areas, measurements or distances are approximate. Plot sizes and dimensions are taken from Promap and are approximate. The text, photographs and plans are for guidance only and are not necessarily comprehensive. It should not be assumed that the property has all necessary planning, building regulation or other consents and Robsons have not tested any services, equipment or facilities. Purchasers must satisfy themselves by inspection or otherwise.