



A DELIGHTFUL THREE BEDROOM HOME IN A POPULAR LOCATION

Latimer Gardens, Pinner, HA5 3RA

ROBSONS

A DELIGHTFUL THREE BEDROOM HOME IN A POPULAR LOCATION

Latimer Gardens, Pinner, HA5 3RA

ENTRANCE HALLWAY • LOUNGE • KITCHEN / DINER • THREE DOUBLE BEDROOMS • LUXURY FAMILY BATHROOM • ATTRACTIVE REAR GARDEN • GARAGE IN NEARBY BLOCK •

Description

An attractive three bedroom property with a beautifully presented, sizeable rear garden, situated in a popular part of Pinner within easy reach of local amenities, schools and transport links.

The ground floor comprises an entrance hallway with a generous store/cloak cupboard, a characterful lounge with a feature fireplace, and a light-filled kitchen/diner with patio doors opening out to the garden. The kitchen offers a variety of modern units that provide ample storage space, an integrated hob, oven & microwave, and a good-size dining area that has adjoining doors through to the main lounge.

The first floor hosts two double bedrooms alongside a luxury family bathroom, with an additional double bedroom to the second floor.





Externally, this charming home boasts a beautifully presented, landscaped rear garden that is laid to lawn with a decking area benefiting from an awning, two garden sheds for storage and a summer house. There is the further benefit of a garage located in a nearby block.

Location

Situated off Pinner Hill Road, this property is a short distance from Pinner high street and vast selection of shopping facilities, restaurants, coffee houses and popular supermarkets. Both Northwood Hills and Hatch End can also be found close by. For commuters, Pinner and Northwood Hills Station provide a regular service into London via the Metropolitan Line, with the Overground accessible at Hatch End. The area is well served by primary and secondary schooling with Pinner Wood School just a stone's throw away. There are plenty of children's parks/play areas as well as recreational facilities.

Additional Information

Guide Price: Price on Application

Tenure: Freehold

Local Authority: London Borough of Harrow

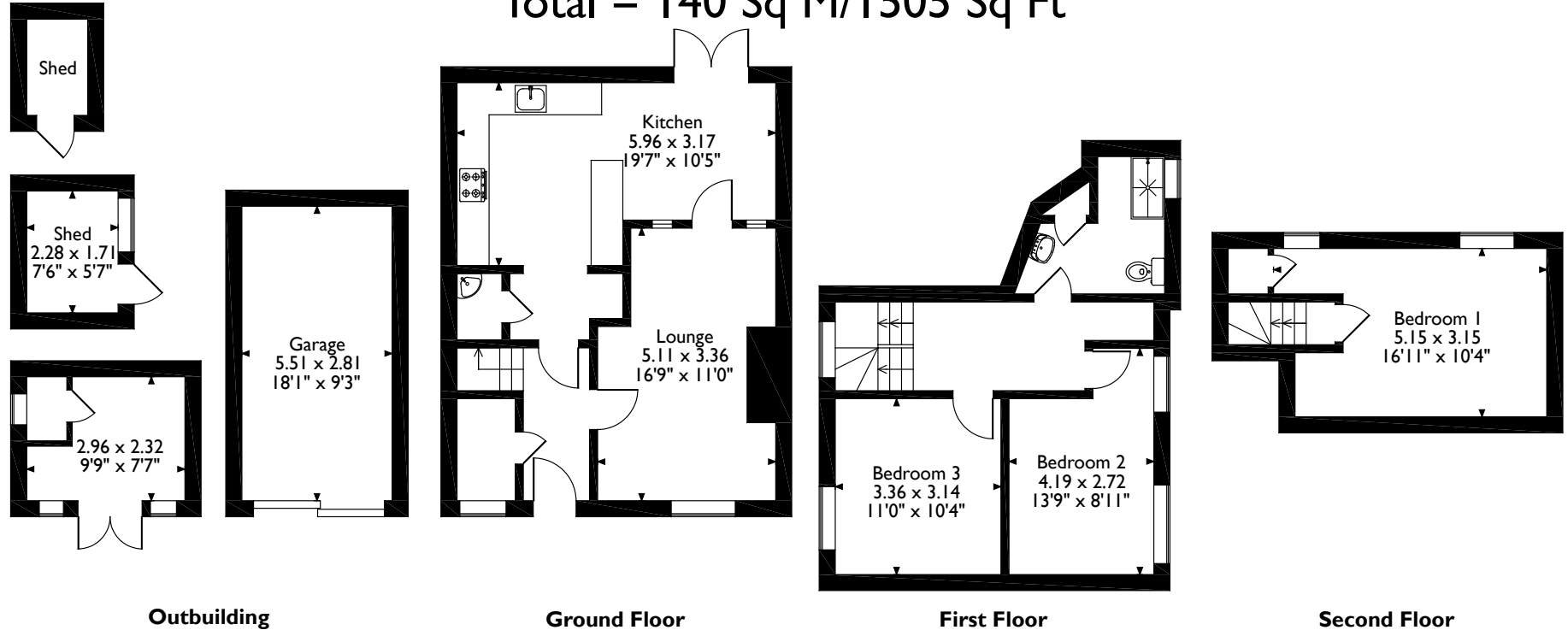
Council Tax: Band E

Energy Efficiency Rating: Band D



Latimer Gardens, Pinner

Approximate Gross Internal Area
 Main House = 112 Sq M/1200 Sq Ft
 Garage = 15 Sq M/161 Sq Ft
 Outbuilding = 13 Sq M/144 Sq Ft
 Total = 140 Sq M/1505 Sq Ft



Please note that the location of doors, windows and other items are approximate and this floorplan is to be used for illustrative purposes only. Unauthorized reproduction is prohibited.

ROBSONS

1 High Street, Pinner, Middlesex, HA5 5PJ
 Tel: 0208 866 8083 Pinner@robsonswb.com

www.robsonswb.com

www.the-londonoffice.co.uk
 40 ST JAMES'S PLACE SW1