



**AN EXTENDED FIVE BEDROOM FAMILY HOME IN A PEACEFUL LOCATION**

Daymer Gardens, Pinner, HA5 2HP

**ROBSONS**



# AN EXTENDED FIVE BEDROOM HOME IN A PEACEFUL LOCATION

Daymer Gardens, Pinner, HA5 2HP

**ENTRANCE HALLWAY • GUEST CLOAKROOM  
• SPACIOUS LOUNGE • KITCHEN/DINING  
ROOM • UTILITY ROOM • CONSERVATORY •  
STUDY • FIVE BEDROOMS, TWO EN-SUITES  
• FAMILY BATHROOM • WELL KEPT GARDEN  
• OUTBUILDING • OFF-STREET PARKING FOR  
MULTIPLE CARS**

## Description

A thoughtfully extended, five bedroom three bathroom, detached family home offering an abundance of space for the family to enjoy. The ground floor comprises an entrance hallway providing access to a spacious light-filled lounge with access to the garden, an open plan kitchen/dining room that effortlessly flows on the conservatory, and a generous utility room. Completing the ground floor is a double bedroom with an en-suite shower room, a small study and a guest cloakroom. To the first floor there is an impressive master bedroom benefitting from a dressing room and a luxury shower room, three further bedrooms and a family bathroom. Externally the property offers a well maintained garden with an outbuilding perfect for a home office or gym. To the front there is a driveway providing off-street parking.







## Location

Located on a peaceful road within easy reach of Pinner, Northwood Hills and Eastcote, this property is not far from a variety of shopping facilities, restaurants, coffee houses and popular supermarkets. For commuters, the Metropolitan line is available at Northwood Hills and Pinner station, with Eastcote offering the Metropolitan and Piccadilly lines, all provide a frequent service into London. The area is well served by primary and secondary schooling, children's play areas and recreational facilities.

## Additional Information

Guide Price: Price on Application

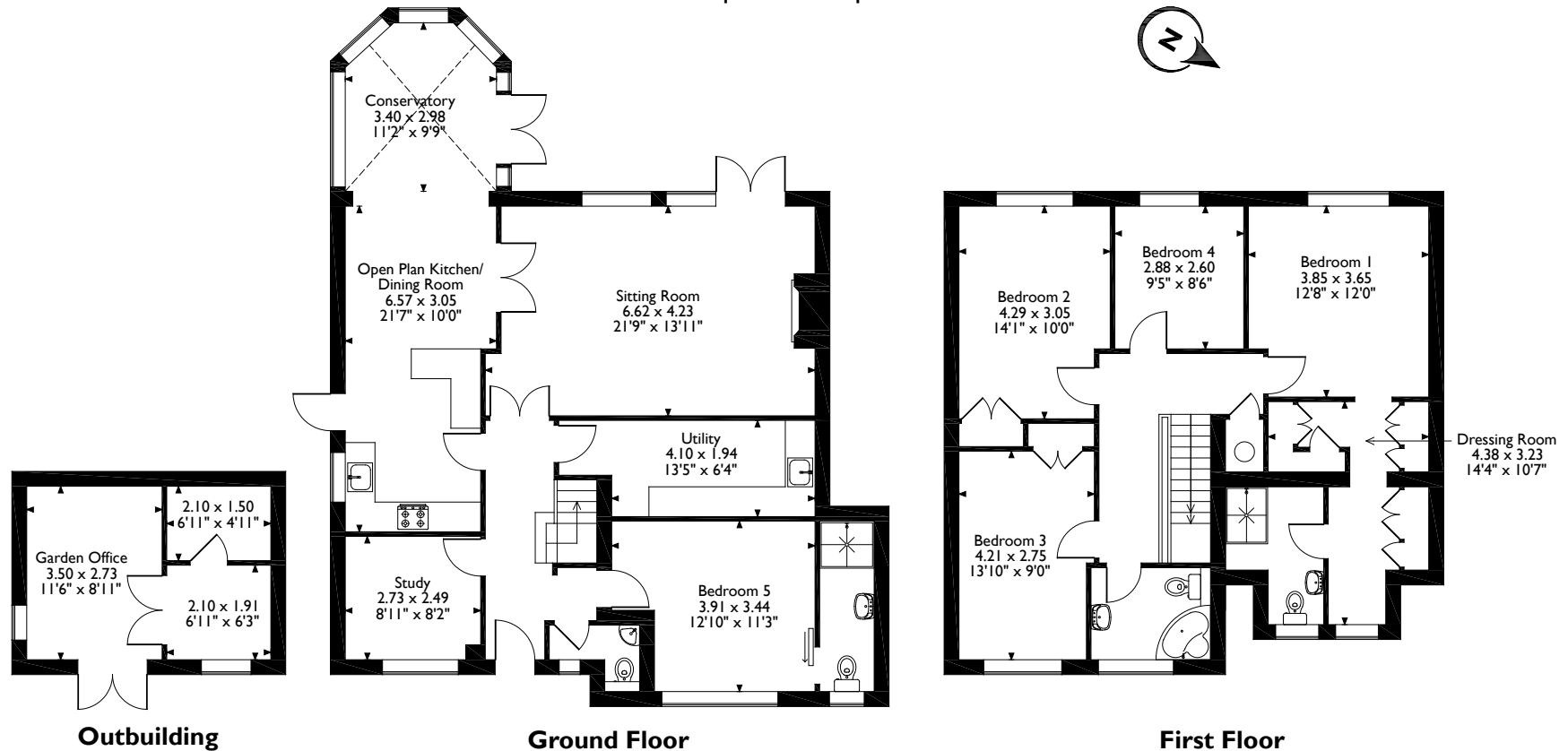
Tenure: Freehold

Local Authority: London Borough of Hillingdon

Energy Efficiency Rating: Band D



Daymer Gardens, Pinner  
 Approximate Gross Internal Area  
 Main House = 185 Sq M/1994 Sq Ft  
 Outbuilding = 17 Sq M/185 Sq Ft  
 Total = 202 Sq M/2179 Sq Ft



Please note that the location of doors, windows and other items are approximate and this floorplan is to be used for illustrative purposes only. Unauthorized reproduction is prohibited.

**ROBSONS**

1 High Street, Pinner, Middlesex, HA5 5PJ  
 Tel: 0208 866 8083 Pinner@robsonswb.com  
[www.robsonswb.com](http://www.robsonswb.com)

[www.the-londonoffice.co.uk](http://www.the-londonoffice.co.uk)  
 40 ST JAMES'S PLACE SW1

Important notice: Robsons, their clients and any joint agents give notice that 1: They are not authorised to make or give any representations or warranties in relation to the property either here or elsewhere, either on their own behalf or on behalf of their client or otherwise. They assume no responsibility for any statement that may be made in these particulars. These particulars do not form part of any offer or contract and must not be relied upon as statements or representations of fact. 2: Any areas, measurements or distances are approximate. Plot sizes and dimensions are taken from Promap and are approximate. The text, photographs and plans are for guidance only and are not necessarily comprehensive. It should not be assumed that the property has all necessary planning, building regulation or other consents and Robsons have not tested any services, equipment or facilities. Purchasers must satisfy themselves by inspection or otherwise.