



A three bedroom character home in a convenient location
Hallam Gardens, Pinner, HA5 4PR

ROBSONS

Asking Price: £2,650 pcm

A three bedroom character home in a convenient location

Hallam Gardens, Pinner, HA5 4PR

• ENTRANCE HALL • SITING ROOM • DINING ROOM • KITCHEN • THREE BEDROOMS • BATHROOM • SEPARATE WC • REAR GARDEN • DRIVEWAY WITH OFF STREET PARKING • GARAGE • UNFURNISHED

Description

A character three bedroom Artega home situated a short walk from Hatch End's amenities as well as highly rated local schools and the Overground station. The ground floor comprises a generous sitting room, a well-equipped kitchen offering both base and eye level units, and a front aspect dining room / study. To the first floor there is a galleried landing with a large window that fills the floor with natural light, three double bedrooms and a family bathroom with a separate WC. Externally there is an attractive rear garden that is laid to lawn with established shrubs and hedges providing a level of privacy. There is a small patio area, perfect for alfresco dining in the summer months.

**** An advance reservation payment of one weeks rent is required to secure**

Location

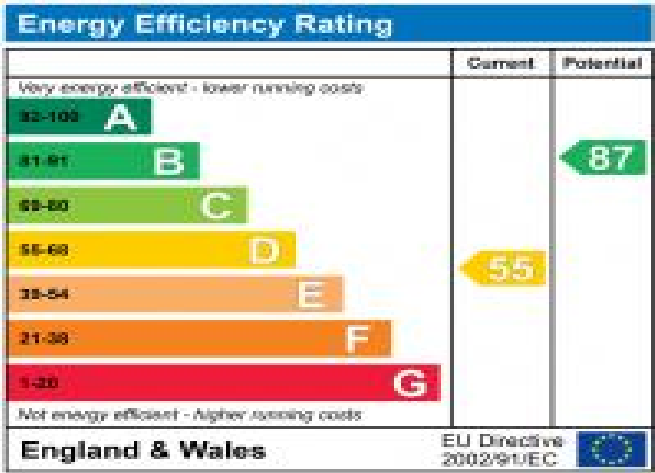
Hallam Gardens is a peaceful, tree-lined road located just a short walk from Hatch End high street which boasts a variety of boutique shops, restaurants, coffee houses and popular supermarkets. Alternatively Pinner Village is close by and offers an alternative choice of shops and restaurants. For commuters, there are excellent transport links in the area with the Overground at Hatch End station and the Metropolitan Line at nearby Pinner station. Both of these lines provide a fast and frequent service into the heart of Central London and beyond. The area is well served for primary and secondary schooling, children's parks/playgrounds and recreational facilities.



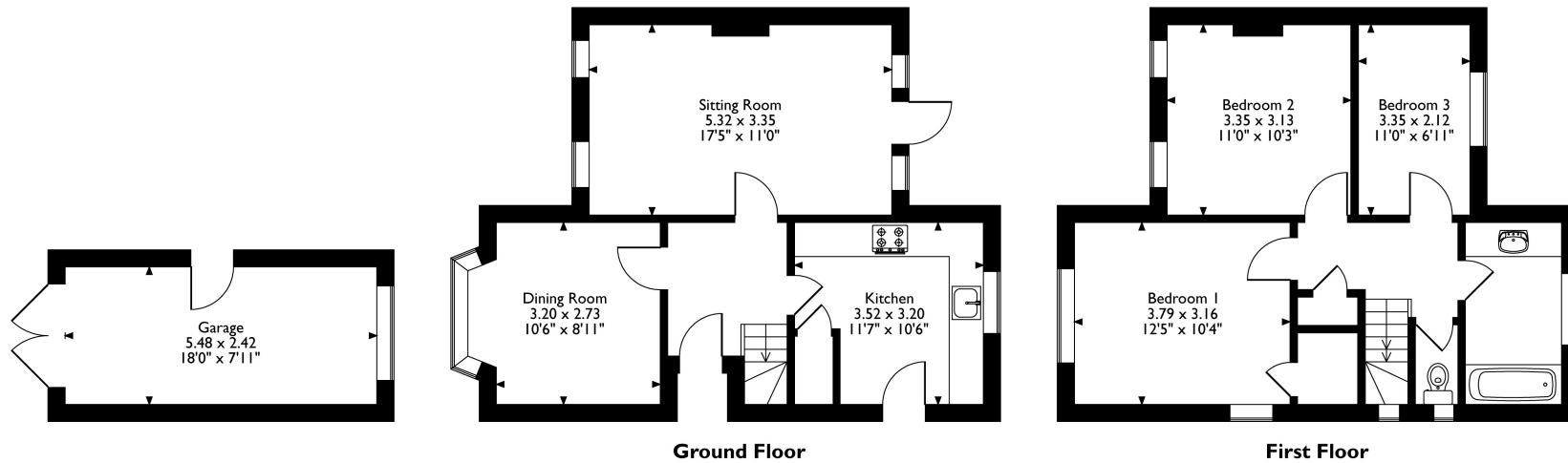


Additional Information

- Local Authority: Harrow
- Council Tax Band: F
- Deposit Amount: £3,057.00
- Reservation Payment: One weeks rent
- Energy Efficiency Rating: Band D
- Available Date: 21/03/2025



Hallam Gardens, Pinner, HA5 4PR
 Approximate Gross Internal Area
 Main House = 91 Sq M/979 Sq Ft
 Garage = 13 Sq M/140 Sq Ft
 Total = 104 Sq M/1119 Sq Ft



Please note that the location of doors, windows and other items are approximate and this floorplan is to be used for illustrative purposes only. Unauthorized reproduction is prohibited.



REGISTERED OFFICE 2-4 PACKHORSE ROAD, GERRARDS CROSS, BUCKINGHAMSHIRE, ENGLAND, SL9 7QE. COMPANY NO. 07557114. VAT NO. GB211239453