



A first double two bedroom maisonette with a rear garden
Lloyd Court, Pinner, HA5 1EF

ROBSONS

Asking Price: £1,650 pcm

A first double two bedroom maisonette with a rear garden

Lloyd Court, Pinner, HA5 1EF

• ENTRANCE HALL • STAIRS TO FIRST FLOOR • LIVING ROOM • MODERN FITTED KITCHEN • MAIN BEDROOM WITH FITTED WARDROBES • BEDROOM TWO • FAMILY BATHROOM • REAR GARDEN SPACE • ON STREET PARKING • FURNISHED

Description

Well presented, first floor, two double bedroom maisonette ideally for local schools and Pinner Town Centre. This property comprises of front facing lounge, fitted kitchen, two double bedrooms and family bathroom. Externally the property boasts rear garden space and street parking. N.B A new EPC has been commissioned

**** An advance reservation payment of one weeks rent is required to secure the property ****

Location

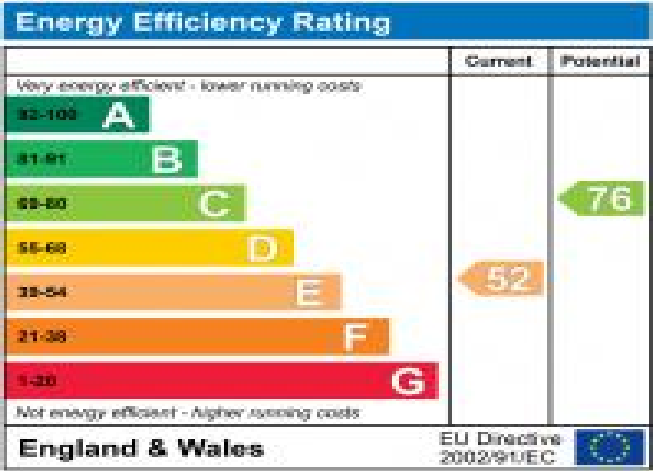
Lloyd Court is peacefully tucked away on West End Lane, a perfect location close to Pinner Village with it's quaint selection of eateries, coveted schooling, shops and public transport links such as the Metropolitan Line tube station.



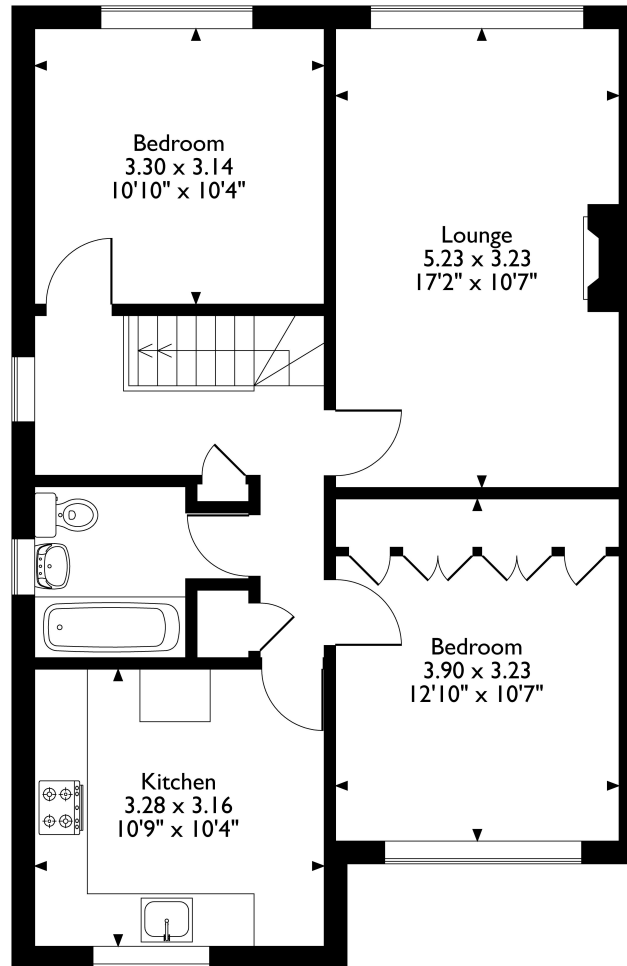


Additional Information

- Local Authority: Harrow
- Council Tax Band: C
- Deposit Amount: £1,903.00
- Reservation Payment: One weeks rent
- Energy Efficiency Rating: Band E
- Available Date: 28/02/2025



Lloyd Court, Pinner, HA5 1EF
Approximate Gross Internal Area
66 Sq M/710 Sq Ft



First Floor

Please note that the location of doors, windows and other items are approximate and this floorplan is to be used for illustrative purposes only. Unauthorized reproduction is prohibited.

