



A three bedroom detached bungalow in a sought after location
Baldwins Lane, Croxley Green, WD3 3LH

ROBSONS

Asking Price: £2,250 pcm

A three bedroom detached bungalow in a sought after location

Baldwins Lane, Croxley Green, WD3 3LH

-
- LARGE RECEPTION HALLWAY • LIVING ROOM • THREE BEDROOMS • KITCHEN • BATHROOM • REAR GARDEN • DRIVEWAY WITH PARKING • UNFURNISHED
-

Description

Available to the market is this well maintained three bedroom detached bungalow situated within easy reach of excellent transport links, highly regarded schools and local amenities. The property comprises a reception room and a living room with French doors opening out to the garden. The kitchen offers a variety of modern units, providing ample storage space, integrated appliances and a door out to the garden. There are three well appointed bedrooms, two with bay windows and one boasting fitted wardrobes and a family bathroom. Externally, this delightful family home offers a good-sized, well presented rear garden with a large patio area and a garden shed. To the front is a driveway providing off-street parking for multiple cars.

Location

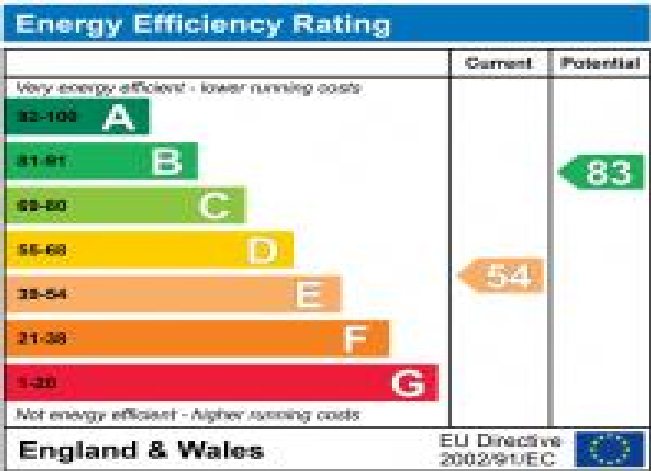
Picturesque Croxley Green provides the perfect backdrop as it offers village charm in the rural suburbs of Hertfordshire. The property is within easy reach of Croxley Green and Rickmansworth town centre with its wide range of boutique shops, coffee houses, restaurants and the major supermarkets. The Metropolitan and Chiltern line train services connects you to London Baker Street, Marylebone Station and beyond. The M25 motorway is available at both junction 17 and 18 connecting you to the national motorway network. Major London airports are also within reach. The area is well served for good quality private and state schools for all ages.





Additional Information

- Local Authority: Three Rivers
- Council Tax Band: E
- Deposit Amount: £2,596.00
- Reservation Payment: One weeks rent
- Energy Efficiency Rating: Band E
- Available Date: 14/05/2026



Approximate Gross Internal Area = 78.1 sq m / 841 sq ft
Lean To & Shed = 20.0 sq m / 215 sq ft
Total = 98.1 sq m / 1,056 sq ft

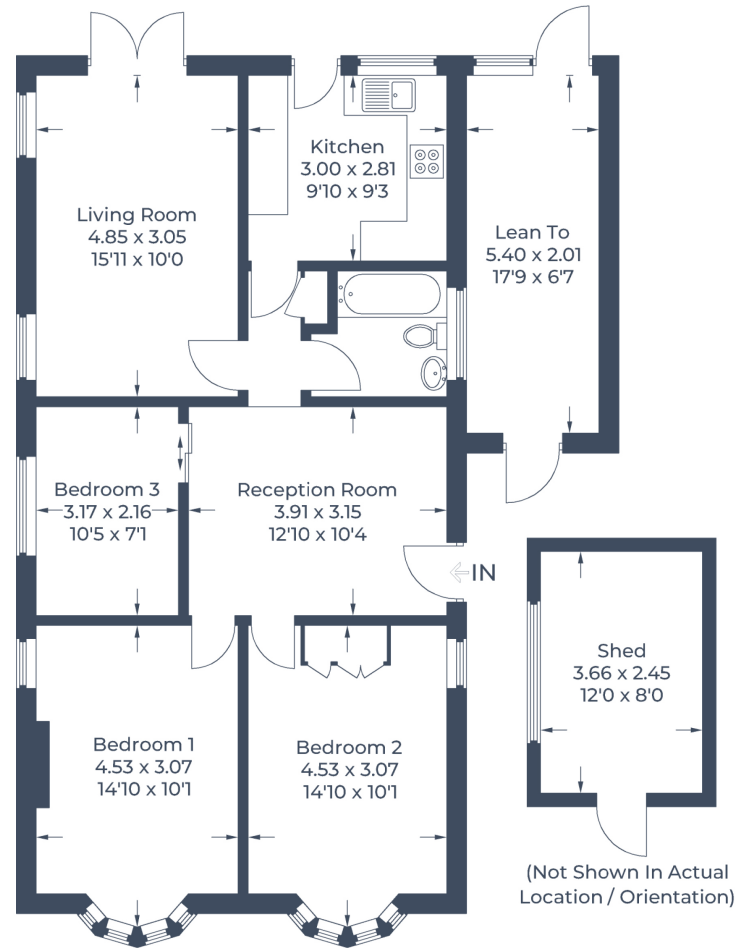


Illustration for identification purposes only,
measurements are approximate, not to scale.
© CJ Property Marketing Produced for Robsons



Middlesex | Hertfordshire | Buckinghamshire



REGISTERED OFFICE 2-4 PACKHORSE ROAD, GERRARDS CROSS, BUCKINGHAMSHIRE, ENGLAND, SL9 7QE. COMPANY NO. 07557114. VAT NO. GB211239453