



A CHARACTERFUL THREE BEDROOM COTTAGE IN CHENIES WITH NO ONWARD CHAIN

Latimer Road, Chenies Village, Hertfordshire, WD3 6ED

ROBSONS

Latimer Road, Chenies Village, Hertfordshire, WD3 6ED

**LIVING ROOM • KITCHEN/DINING ROOM •
LAUNDRY ROOM • THREE BEDROOMS •
FAMILY BATHROOM • ATTRACTIVE REAR
GARDEN • NO ONWARD CHAIN**

Description

Robsons are pleased to present this Grade II three bedroom cottage situated in Chenies Village with ample character and charm, an attractive rear garden. This property is offered to the market with no onward chain.

The ground floor comprises a front aspect living room with character beams and a feature brick fireplace and an open-plan kitchen/dining room with French doors opening out to the garden.

The kitchen features a variety of fitted units offering plenty of storage space, integrated appliances and a ranger master cooker. Off the kitchen is a laundry room.





To the first floor there are three double bedrooms and a family bathroom.

Externally, this lovely cottage boasts an attractive rear with a patio area to enjoy outside dining.

Location

Chenies is a charming and sought after village with a number of amenities that include The Bedford Arms Hotel, Red Lion Pub and village cricket club. There is also a primary school and historic Manor House. Schooling in the area includes York House, Royal Masonic, Dr Challoner's Grammar School and St Clements Danes School. Nearby Rickmansworth and Chorleywood provide a fast Metropolitan Line train service to Baker Street and the City as well as Chiltern Turbo to Marylebone. Tributary of the River Chess and valley provide a wonderful setting for walking and riding.

Additional Information

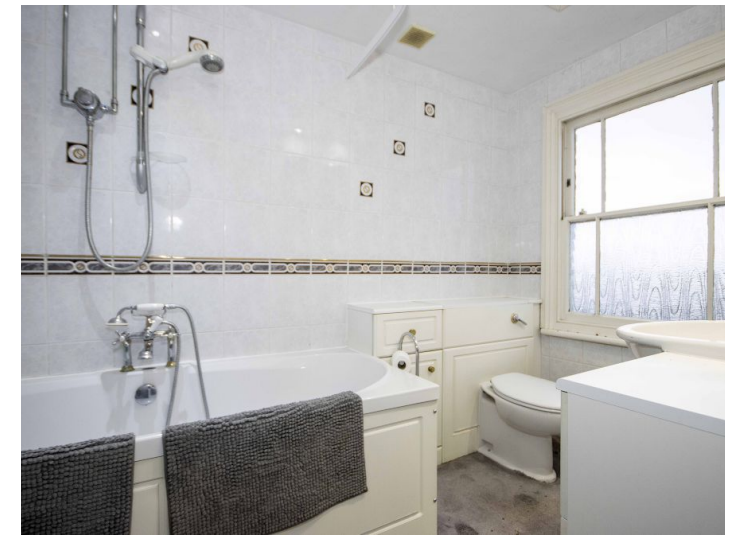
Tenure: Freehold

Local Authority: Three Rivers District Council

Council Tax Band: F

Energy Efficiency Rating: D

For additional information, please refer to www.robsonswb.com or call us on: 01923 285525.



Approximate Gross Internal Area
88.0 sq m / 947 sq ft

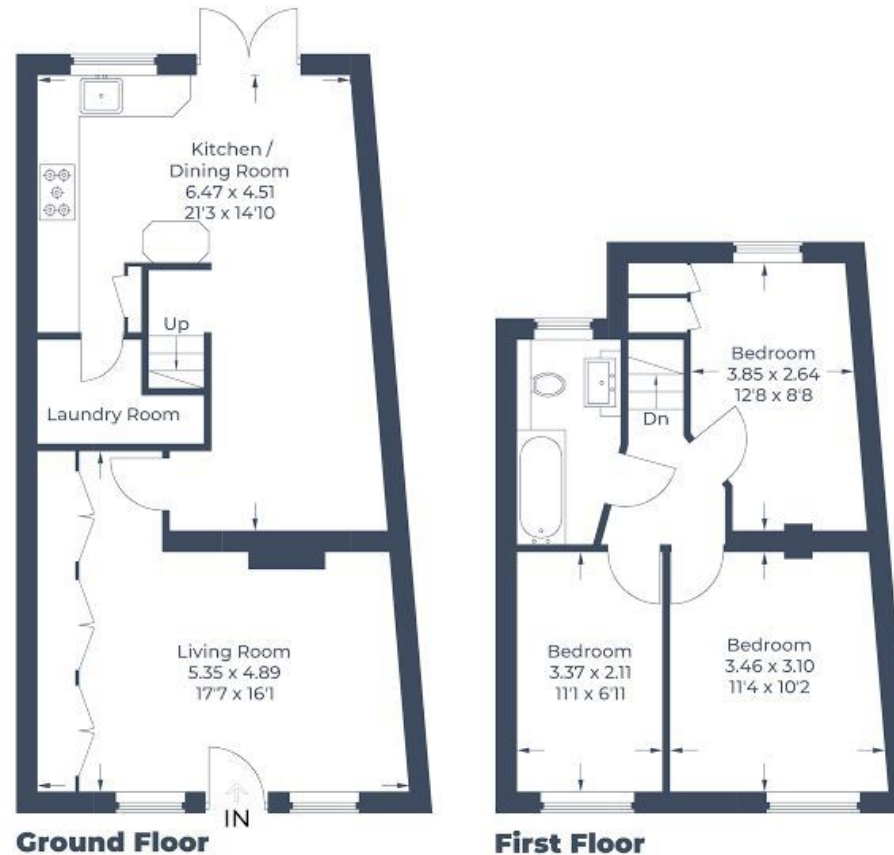


Illustration for identification purposes only,
measurements are approximate, not to scale.
© CJ Property Marketing Produced for Robsons

ROBSONS

2 New Parade, Chorleywood, Hertfordshire, WD3 5NJ
Tel: 01923 285525 Email: chorleywood@robsonswb.com

www.robsonswb.com

SCAN TO VISIT



OUR WEBSITE

Important notice: Robsons, their clients and any joint agents give notice that 1: They are not authorised to make or give any representations or warranties in relation to the property either here or elsewhere, either on their own behalf or on behalf of their client or otherwise. They assume no responsibility for any statement that may be made in these particulars. These particulars do not form part of any offer or contract and must not be relied upon as statements or representations of fact. 2: Any areas, measurements or distances are approximate. Plot sizes and dimensions are taken from Promap and are approximate. The text, photographs and plans are for guidance only and are not necessarily comprehensive. It should not be assumed that the property has all necessary planning, building regulation or other consents and Robsons have not tested any services, equipment or facilities. Purchasers must satisfy themselves by inspection or otherwise.