



A two bedroom ground floor flat with a private rear garden
West End Court, Pinner, HA5 1BP

ROBSONS

Asking Price: £1,800 pcm

A two bedroom ground floor flat with a private rear garden

West End Court,Pinner, HA5 1BP

• ENTRANCE HALL • LIVING ROOM WITH FEATURE FIREPLACE • FITTED KITCHEN • TWO DOUBLE BEDROOMS • BATHROOM • PRIVATE REAR GARDEN • ON STREET PARKING (PERMITS AVAILABLE) • UNFURNISHED

Description

A two-bedroom ground floor maisonette benefitting from a private south-facing rear garden, situated a few minutes' walk from Pinner High Street and the Metropolitan Line Station, with West Lodge Primary School close by. The property comprises a reception room, two double bedrooms, a fitted kitchen and a three-piece bathroom. There is direct access to a private rear garden that is laid to lawn, with a garage in a nearby block.

**** An advance reservation payment of one weeks rent is required to secure the property ****

Location

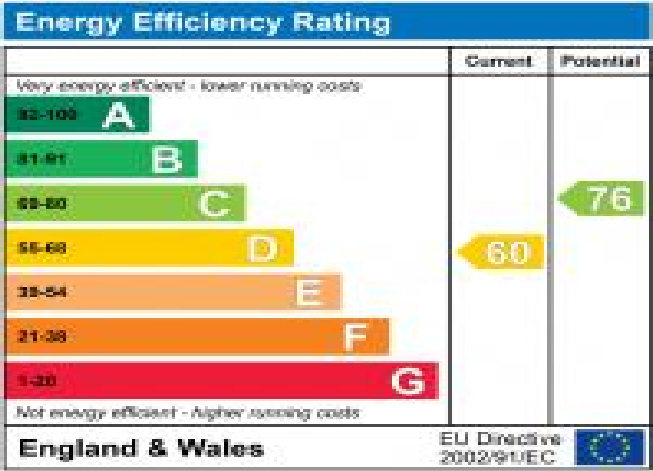
West End Court is off West End Avenue, just a few minutes' walk to Pinner High Street and a variety of shopping facilities, restaurants, coffee houses and popular supermarkets. For commuters, Pinner Station provides a regular service into London via the Metropolitan Line, with there being easy access to a number of local bus routes. The area is well served by primary and secondary schooling, with West Lodge Primary School within walking distance, as well as Pinner Wood Primary, Grimsdyke Primary and Nower Hill High School all close by.



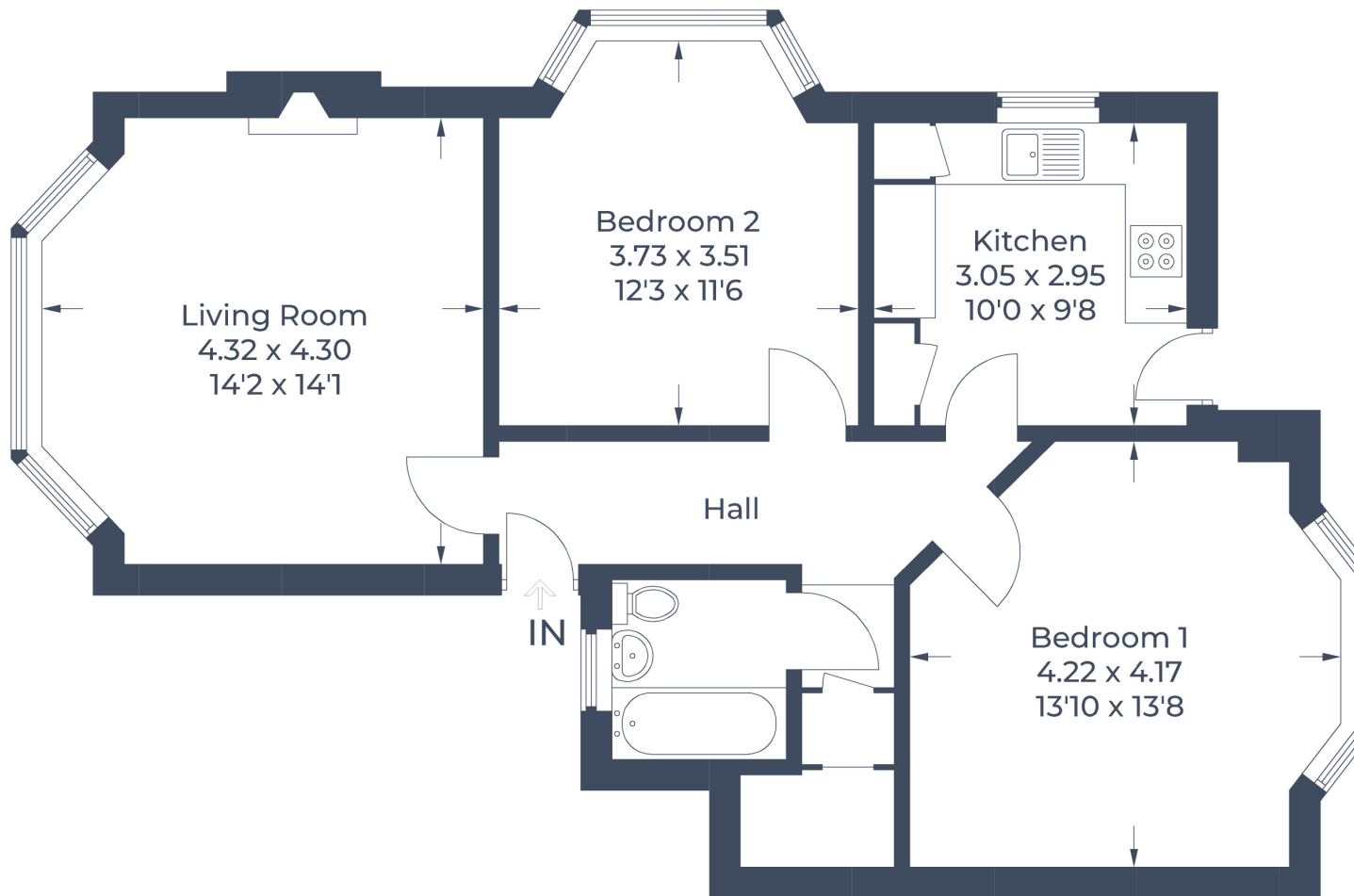


Additional Information

- Local Authority: Hillingdon
- Council Tax Band: D
- Deposit Amount: £2,976.00
- Reservation Payment: One weeks rent
- Energy Efficiency Rating: Band D
- Available Date: 20/03/2025



Approximate Gross Internal Area = 71.0 sq m / 764 sq ft



Ground Floor

Illustration for identification purposes only,
measurements are approximate, not to scale.
© CJ Property Marketing Produced for Robsons

