



A two bedroom, two bathroom third floor apartment in a central location
Bryant Apartments, Harrow, HA1 1GX

ROBSONS

Asking Price: £2,400 pcm

A two bedroom, two bathroom third floor apartment in a central location

Bryant Apartments, Harrow, HA1 1GX

• STYLISH COMMUNAL ENTRANCE HALL • LIFT TO ALL FLOORS • ENTRANCE HALL • OPEN PLAN LOUNGE/DINING ROOM • OPEN PLAN TO FITTED KITCHEN • UTILITY ROOM • BEDROOM ONE WITH FITTED WARDROBES AND ENSUITE • BEDROOM TWO • BATHROOM • COMMUNAL GROUNDS • FURNISHED • PARKING AVAILABLE FOR AN EXTRA CHARGE

Description

Robsons are pleased to present this spacious two-bedroom apartment in the Harrow Square development next to Harrow on the Hill station. The flat comprises a well-proportioned living space, downlighters to the hallway, two double bedrooms, a modern bathroom, en suite bathroom and an open-plan kitchen. The property also features high-end fixtures and fittings throughout. Individually designed kitchen has white matt soft-close doors and drawers, fully integrated appliances including single oven, ceramic hob, microwave, extractor fan, dishwasher, and fridge/freezer. Fitted wardrobe in the master bedroom, carpets to all bedrooms, USB points to the master bedroom, Superfast broadband (subject to subscription). The development benefits from a twelve hours concierge service, lift access, CCTV security system coverage and interior-designed entrance foyer. N.B Parking available for an extra £100-£150 per month

Location

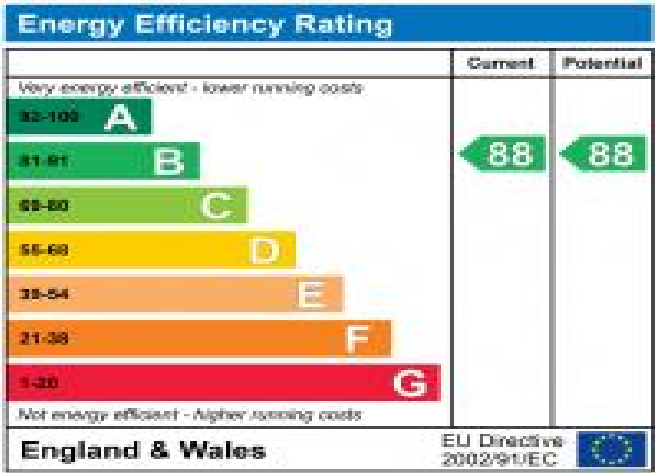
Superb transport links from Harrow-on-the-Hill Station include Underground services to Baker Street and the City (Metropolitan Line) and National Rail services to Paddington (Chiltern Railways)



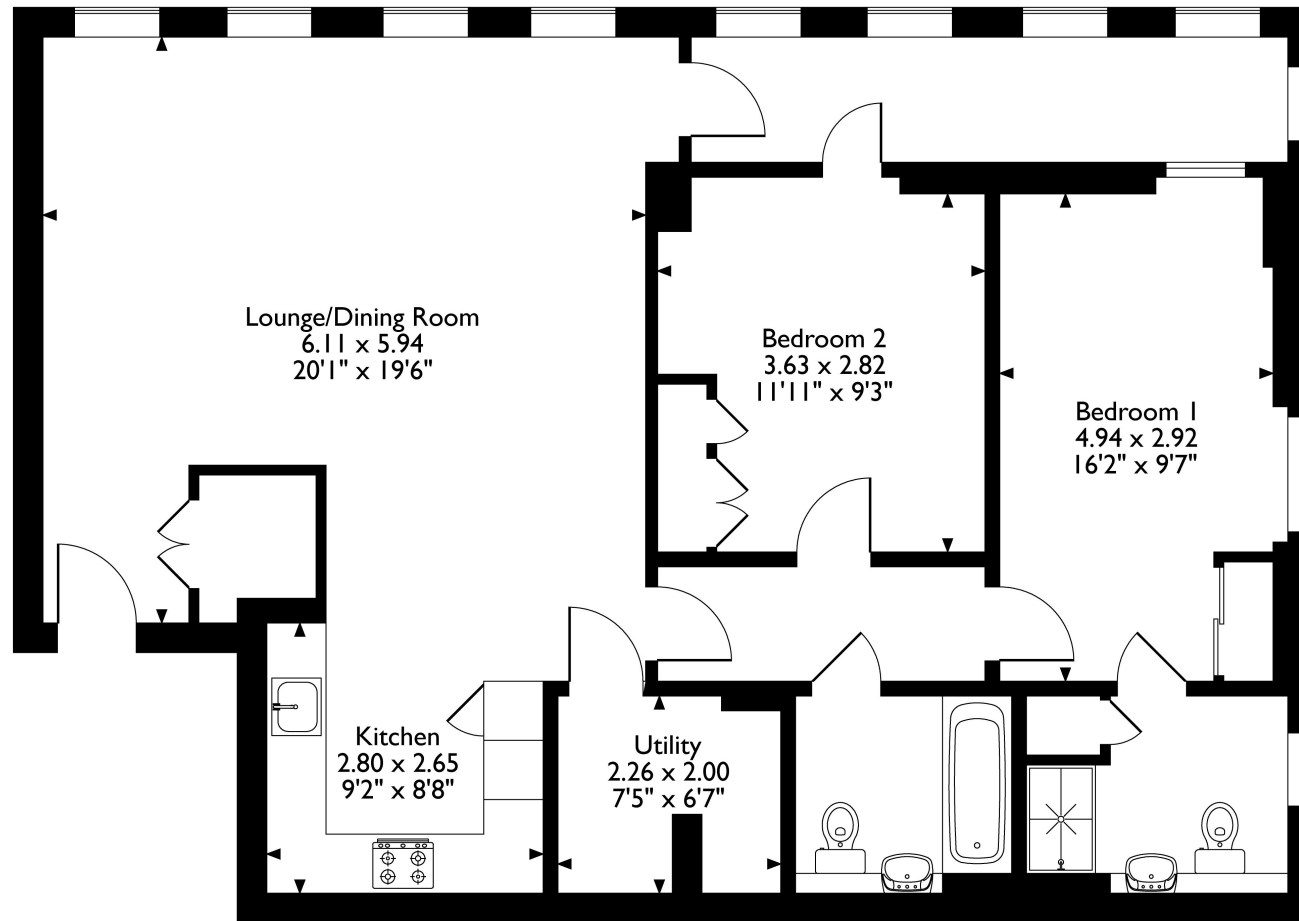


Additional Information

- Local Authority: Harrow
- Council Tax Band: D
- Deposit Amount: £2,769.00
- Reservation Payment: One weeks rent
- Energy Efficiency Rating: Band B
- Available Date: 03/02/2025



Perceval Square, Bryant Apartments,
College Road, Harrow, HA1 1GX
Approximate Gross Internal Area
103 Sq M/1109 Sq Ft



Third Floor

Please note that the location of doors, windows and other items are approximate and this floorplan is to be used for illustrative purposes only. Unauthorized reproduction is prohibited.

