



## STUNNING FOUR BEDROOM COTTAGE IN CENTRAL RICKMANSWORTH

Ebury Road, Rickmansworth, Hertfordshire, WD3 1BL

**ROBSONS**



# STUNNING FOUR BEDROOM COTTAGE IN CENTRAL RICKMANSWORTH

Ebury Road, Rickmansworth, Hertfordshire, WD3  
1BL

- KITCHEN/BREAKFAST ROOM
- OPEN PLAN LIVING/DINING ROOM
- PRINCIPAL BEDROOM WITH EN-SUITE
- THREE FURTHER BEDROOMS
- FAMILY BATHROOM
- SOUTH FACING REAR GARDEN
- CENTRAL RICKMANSWORTH LOCATION

## Description

Robsons are pleased to present this immaculately presented four bedroom two bathroom end of terrace property situated in a sought after central Rickmansworth location.

The property has a welcoming entrance hall, an open plan living/dining room with a large window to the front and a feature fireplace. The kitchen/breakfast room has ample cupboards and work surfaces, together with a gas hob, electric oven and breakfast bar.







To the first floor are three bedrooms, one with fitted wardrobes, together with the modern family bathroom which has a 'P' shaped bath with shower above and a heated towel rail. Stairs lead to the principal bedroom which has an en-suite shower room and access to eaves storage.

The well maintained rear garden is south facing and mainly laid to lawn, with a patio adjacent to the property and a second patio to the rear.

### Location

Rickmansworth town centre has a wide range of boutique shops, coffee houses, restaurants and major supermarkets. The Metropolitan and Chiltern line train services connect you to London Baker Street, Marylebone Station and beyond. The M25 motorway is available at both junction 17 and 18, connecting you to the national motorway network. Major London airports are also within reach. The area is well served for good quality private and state schools for all ages. Chorleywood and Rickmansworth offer everything for the sporting individual from rugby, cricket, football, tennis, horse riding and golf. Rickmansworth Aquadrome is an ideal setting for walks, sailing, fishing and water skiing.

### Additional Information

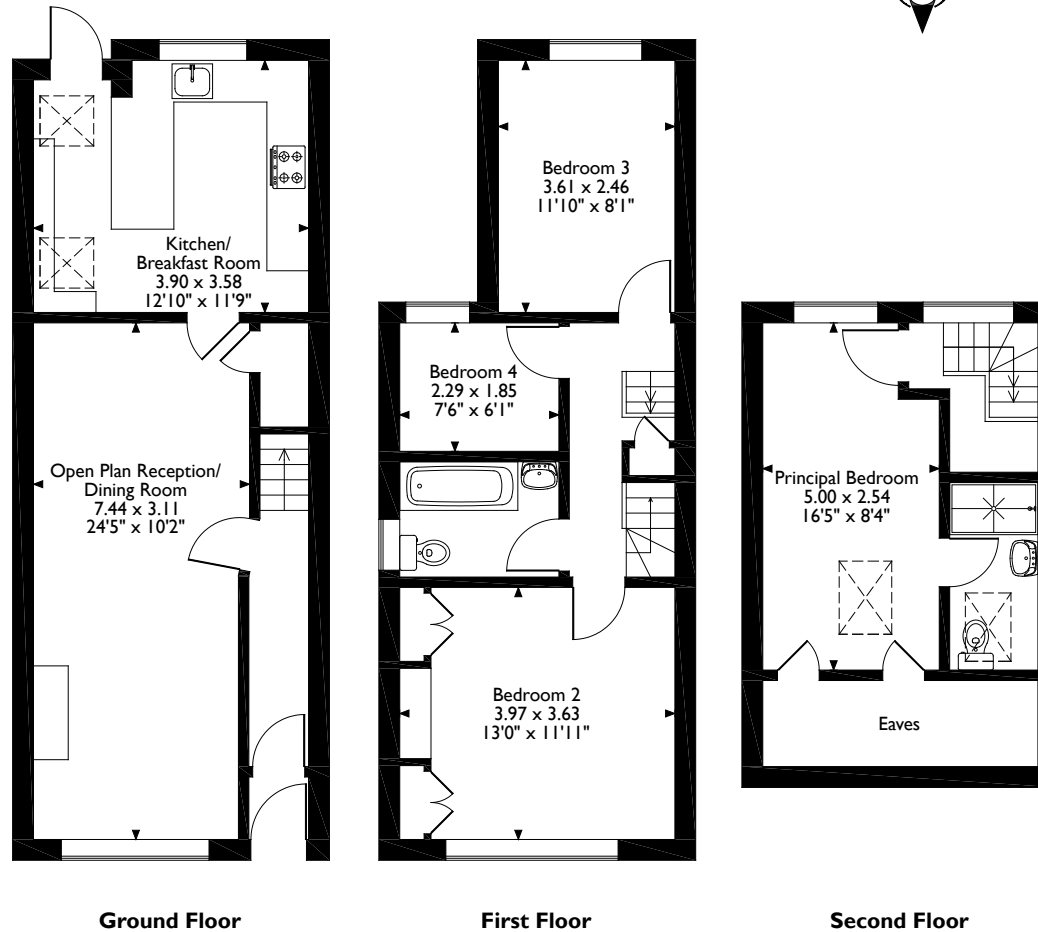
Tenure: Freehold

Local Authority: Three Rivers District Council

Energy Efficiency Rating: Band D



Ebury Road, Rickmansworth  
Approximate Gross Internal Area  
103 Sq M/1109 Sq Ft



Please note that the location of doors, windows and other items are approximate and this floorplan is to be used for illustrative purposes only. Unauthorized reproduction is prohibited.

**ROBSONS**

130 High Street, Rickmansworth, Hertfordshire, WD3 1AB  
Tel: 01923 777762 Email: rickmansworth@robsonswb.com

[www.robsonswb.com](http://www.robsonswb.com)

[www.the-londonoffice.co.uk](http://www.the-londonoffice.co.uk)  
40 ST JAMES'S PLACE SW1

Important notice: Robsons, their clients and any joint agents give notice that 1: They are not authorised to make or give any representations or warranties in relation to the property either here or elsewhere, either on their own behalf or on behalf of their client or otherwise. They assume no responsibility for any statement that may be made in these particulars. These particulars do not form part of any offer or contract and must not be relied upon as statements or representations of fact. 2: Any areas, measurements or distances are approximate. Plot sizes and dimensions are taken from Promap and are approximate. The text, photographs and plans are for guidance only and are not necessarily comprehensive. It should not be assumed that the property has all necessary planning, building regulation or other consents and Robsons have not tested any services, equipment or facilities. Purchasers must satisfy themselves by inspection or otherwise.