



## EXCEPTIONAL FIVE BEDROOM FAMILY HOME WITH RIVER ACCESS

---

Uxbridge Road, Rickmansworth, Hertfordshire, WD3 7DH

**ROBSONS**



# EXCEPTIONAL FIVE BEDROOM FAMILY HOME WITH RIVER ACCESS

Uxbridge Road, Rickmansworth, Hertfordshire, WD3 7DH

**LOUNGE • SECOND RECEPTION • KITCHEN/BREAKFAST/FAMILY ROOM • PRINCIPAL BEDROOM • FOUR FURTHER BEDROOMS • FAMILY BATHROOM • ATTRACTIVE REAR GARDEN • RIVER BACKING • STRIKING VIEWS**

## Description

This impressive five bedroom family home has been lovingly modernised by the current owners whilst retaining lots of original features and backs onto the River Colne.

The entrance hall leads into the reception rooms. The lounge to the front has a feature fireplace and bay window. The second reception also has a feature fireplace, fitted storage and a door through to the bright and spacious kitchen/breakfast/family room, which has a good range of fitted storage, integrated appliances, a central island and a dining area, with doors opening onto the pretty rear garden.

To the first floor are three bedrooms, one with a fitted wardrobe and feature fireplace, another with a feature fireplace and the third with a balcony overlooking the garden.







The family bathroom is also situated on the first floor.

There are two further good sized bedrooms on the second floor, one with eaves storage and the other with a Juliet balcony and stunning views.

The rear garden is a particular focal point of this property. There is a patio adjacent to the property and a lawn with pretty flower and shrub borders. An archway leads through to a second seating area at the rear, with a tranquil river setting providing beautiful views of the River Colne and Rickmansworth Aquadrome.

Rickmansworth town centre has a wide range of shops, coffee houses, restaurants and supermarkets. The Metropolitan and Chiltern line train services connect you to London Baker Street, Marylebone Station and beyond. The M25 motorway is available at both junction 17 and 18. The area is well served for good quality private and state schools for all ages. Chorleywood and Rickmansworth offer everything for the sporting individual from rugby, cricket, football, tennis, horse riding and golf. Rickmansworth Aquadrome is an ideal setting for walks, sailing, fishing and water skiing.

### **Additional Information**

Guide Price: Price on Application

Tenure: Freehold

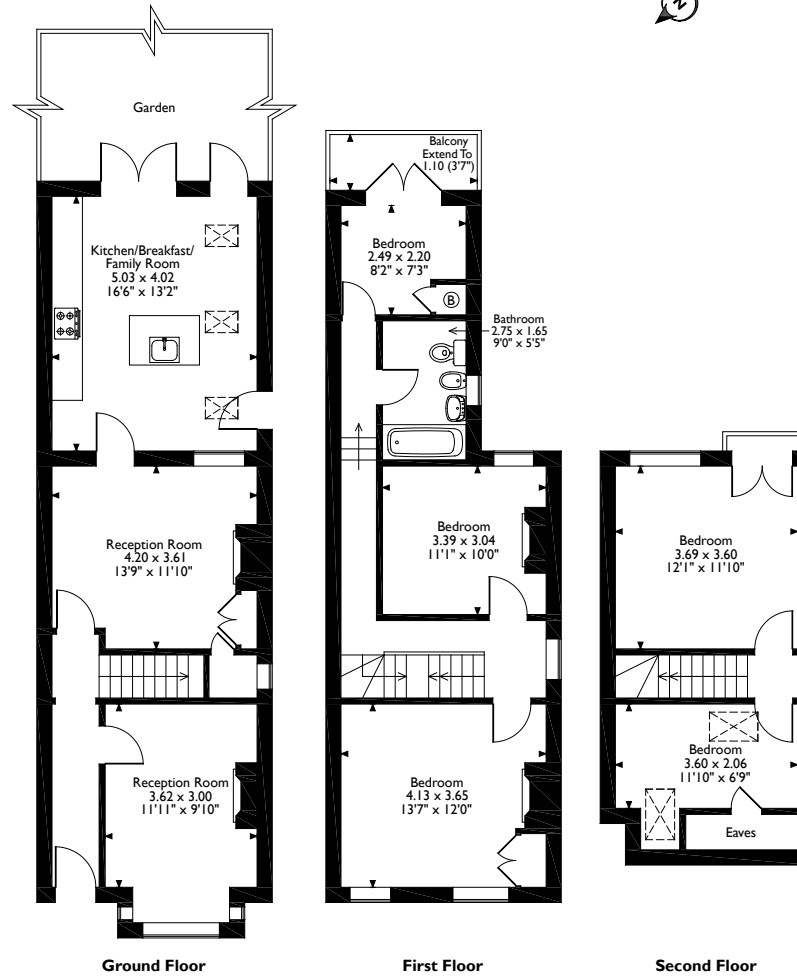
Local Authority: Three Rivers District Council

Energy Efficiency Rating: Band D





Uxbridge Road, Rickmansworth, Hertfordshire  
 Approximate Gross Internal Area  
 128 Sq M/1378 Sq Ft



Please note that the location of doors, windows and other items are approximate and this floorplan is to be used for illustrative purposes only. Unauthorized reproduction is prohibited.



130 High Street, Rickmansworth, Hertfordshire, WD3 1AB  
 Tel: 01923 777762 Email: rickmansworth@robsonswb.com  
[www.robsonswb.com](http://www.robsonswb.com)

