



WELL PRESENTED & EXTENDED FOUR BEDROOM, TWO BATHROOM FAMILY HOME

West Way, Rickmansworth, Hertfordshire, WD3 7EH

ROBSONS

WELL PRESENTED & EXTENDED FOUR BEDROOM, TWO BATHROOM FAMILY HOME

- DINING ROOM
- RECEPTION ROOM
- KITCHEN/BREAKFAST ROOM
- GUEST WC
- PRINCIPAL BEDROOM WITH ENSUITE
- THREE FURTHER BEDROOMS
- FAMILY BATHROOM
- REAR GARDEN & OFF-STREET PARKING

Description

A fantastic four bedroom, two-bathroom extended family home with generously proportioned interiors, a sizeable rear garden, and off-street parking. This property is ideally placed for local amenities, schools and transport links.

The ground floor comprises an entrance hallway with a cupboard providing under stair storage, a guest WC, and stairs to the first floor. There is a front aspect reception room with a feature fireplace and a with bay window, and a second reception room that effortlessly flows through to an open-plan kitchen/breakfast room. The kitchen features a variety of modern units with integrated appliances and a French door opening out to the garden.





To the first floor there are three well-appointed bedrooms with two benefiting from fitted wardrobes and a family bathroom. The second floor hosts a superb principal bedroom with fitted wardrobes, two skylights and an ensuite shower room.

Externally, this lovely home offers a well maintained and sizeable rear garden that is laid to lawn with shrub and hedge borders and a large patio area to enjoy outside dining. To the front is a driveway providing off-street parking and side access to the rear garden.

Location

Rickmansworth town centre has a wide range of shops, coffee houses and restaurants. The Metropolitan and Chiltern line train services connect you to London Baker Street, Marylebone Station and beyond. The M25 motorway is available at both junction 17 and 18, connecting you to the national motorway network. The area is well served for good quality private and state schools for all ages. Chorleywood and Rickmansworth offer everything for the sporting individual from rugby, cricket, football, tennis, horse riding and golf. Rickmansworth Aquadrome is an ideal setting for walks, sailing, fishing and water skiing.

Additional Information

Tenure: Freehold

Local Authority: Three Rivers District Council

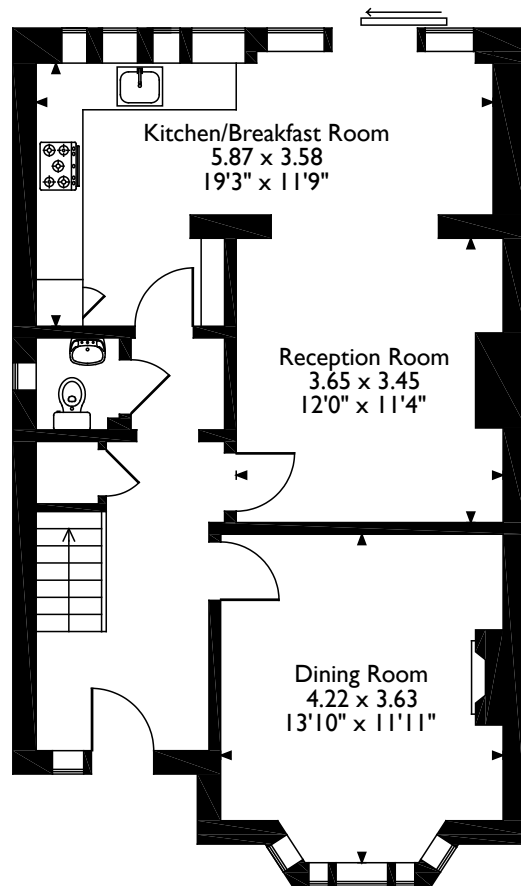
Council Tax: Band F

Energy Efficiency Rating: Band D

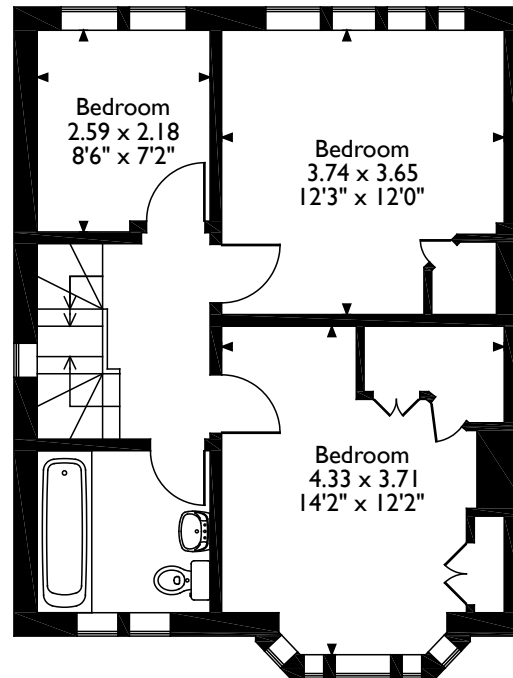


55 West Way, Rickmansworth, Hertfordshire

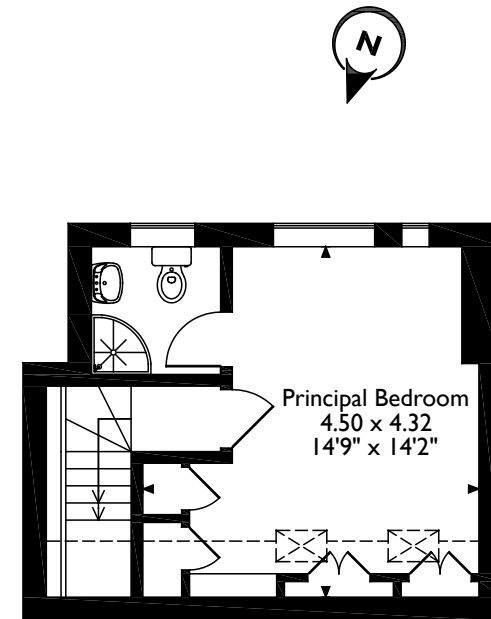
Approximate Gross Internal Area 127 Sq M/1367 Sq Ft



Ground Floor



First Floor



Second Floor

Please note that the location of doors, windows and other items are approximate and this floorplan is to be used for illustrative purposes only. Unauthorized reproduction is prohibited.

ROBSONS

130 High Street, Rickmansworth, Hertfordshire, WD3 1AB

Tel: 01923 777762 Rickmansworth@robsonswb.com

www.robsonswb.com

[www.](http://www.the-londonoffice.co.uk)

**the
londonoffice.co.uk**

40 ST JAMES'S PLACE SW1

Important notice: Robsons, their clients and any joint agents give notice that 1: They are not authorised to make or give any representations or warranties in relation to the property either here or elsewhere, either on their own behalf or on behalf of their client or otherwise. They assume no responsibility for any statement that may be made in these particulars. These particulars do not form part of any offer or contract and must not be relied upon as statements or representations of fact. 2: Any areas, measurements or distances are approximate. Plot sizes and dimensions are taken from Promap and are approximate. The text, photographs and plans are for guidance only and are not necessarily comprehensive. It should not be assumed that the property has all necessary planning, building regulation or other consents and Robsons have not tested any services, equipment or facilities. Purchasers must satisfy themselves by inspection or otherwise.