



A two bedroom first floor maisonette with a share of the private rear garden  
Lloyd Court, Pinner, HA5 1EG



**Asking Price: £1,650 pcm**

## **A two bedroom first floor maisonette with a share of the private rear garden**

Lloyd Court, Pinner, HA5 1EG

---

• FRONT DOOR AND STAIRS TO FIRST FLOOR • ENTRANCE HALL • LIVING ROOM • KITCHEN • TWO BEDROOMS • BATHROOM • SHARE OF PRIVATE GARDEN • ON STREET PARKING • UNFURNISHED

---

### **Description**

A spacious two bedroom first floor maisonette located a brief walk to Pinner High Street and Station. This outstanding first floor maisonette briefly comprises of entrance hallway, reception room, modern fitted kitchen, two bedrooms and a modern family bathroom suite. The property also benefits from a share of private rear garden and has street parking.

**\*\* An advance reservation payment of one weeks rent is required to secure the property \*\***

### **Location**

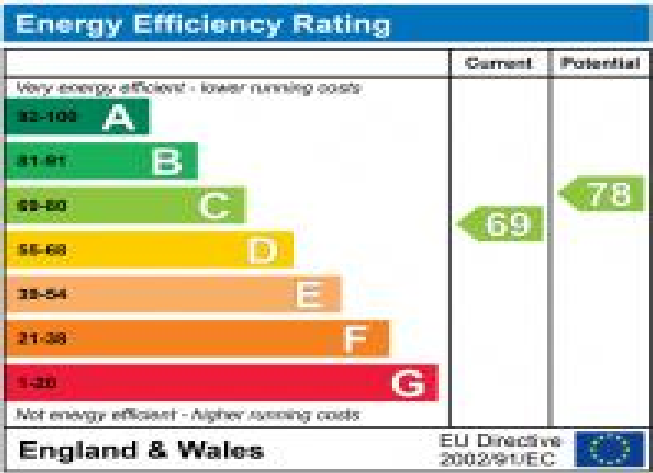
Lloyd Court is tucked away peacefully on West End Lane, a perfect location close to Pinner Village with its quaint selection of eateries, shops and public transport links such as the Metropolitan Line tube station, only a short stroll from coveted schooling





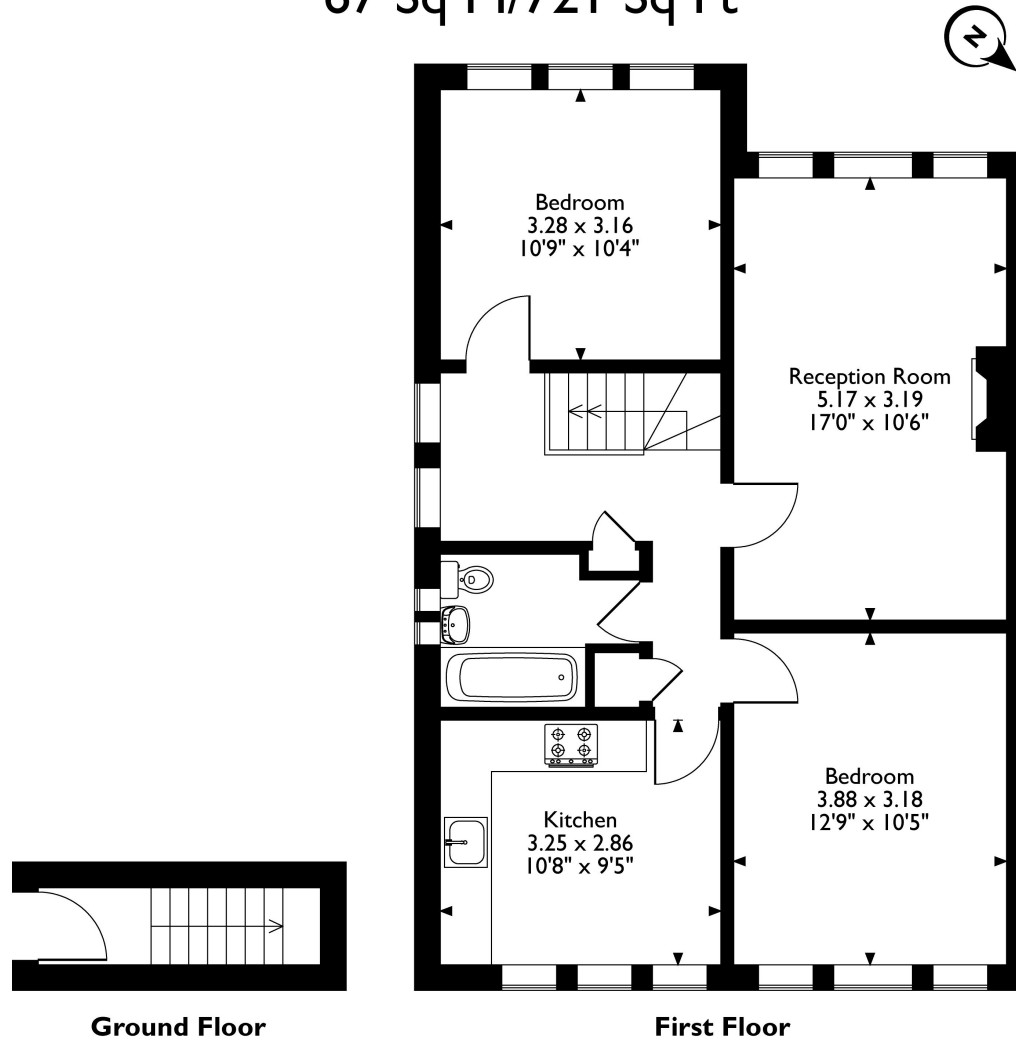
### Additional Information

- Local Authority: Harrow
- Council Tax Band: C
- Deposit Amount: £1,903.00
- Reservation Payment: One weeks rent
- Energy Efficiency Rating: Band C
- Available Date: 06/12/2024



# Lloyd Court, Pinner, HA5 1EG

## Approximate Gross Internal Area 67 Sq M/721 Sq Ft



Please note that the location of doors, windows and other items are approximate and this floorplan is to be used for illustrative purposes only. Unauthorized reproduction is prohibited.

