



A two bedroom ground floor apartment in this prestigious development  
Elm Park Court, Pinner, HA5 3LJ

**ROBSONS**



**Asking Price: £1,650 pcm**

## **A two bedroom ground floor apartment in this prestigious development**

Elm Park Court, Pinner, HA5 3LJ

---

• COMMUNAL ENTRANCE HALL • ENTRANCE HALL • LIVING ROOM • FITTED KITCHEN • TWO BEDROOMS ONE WITH WARDROBES • BATHROOM • COMMUNAL GROUNDS • RESIDENTS PARKING • UNFURNISHED

---

### **Description**

An extremely rare opportunity to occupy this stunning ground floor two bedroom apartment ideally positioned in the heart of Pinner within the prestigious Elm Park Court development. This apartment comprises spacious living room, contemporary fitted kitchen, two double bedrooms and bathroom.

**\*\* An advance reservation payment of one weeks rent is required to secure the property \*\***

### **Location**

Elm Park Court is perfectly positioned in the heart of Pinner with all the wonderful amenities it has to offer. Ample shops, restaurants, beautiful parks, coveted schooling and excellent transport links such as the Metropolitan Line tube station just moments away.

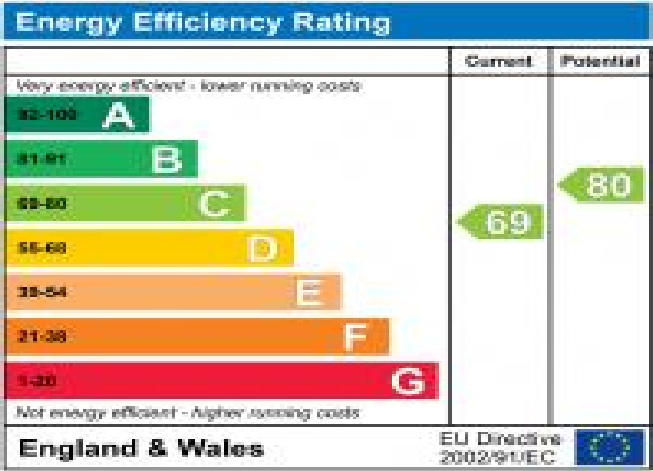




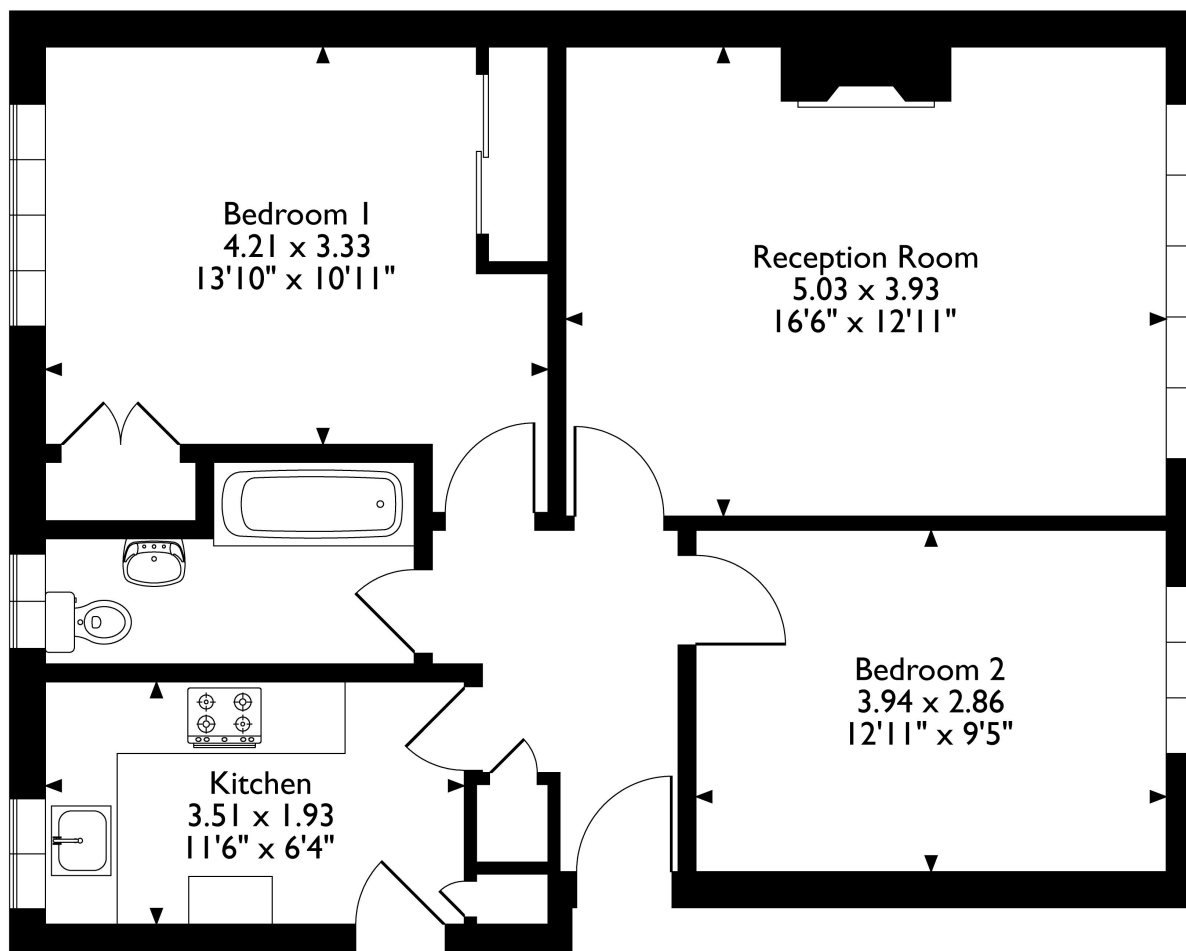


Additional Information

- Local Authority: Harrow
- Council Tax Band: D
- Deposit Amount: £1,903.00
- Reservation Payment: One weeks rent
- Energy Efficiency Rating: Band C
- Available Date: 17/12/2024



Elm Park Court, Elm Park Road, Pinner, HA5 3LJ  
Approximate Gross Internal Area  
67 Sq M/721 Sq Ft



Please note that the location of doors, windows and other items are approximate and this floorplan is to be used for illustrative purposes only. Unauthorized reproduction is prohibited.



Middlesex | Hertfordshire | Buckinghamshire



REGISTERED OFFICE 2-4 PACKHORSE ROAD, GERRARDS CROSS, BUCKINGHAMSHIRE, ENGLAND, SL9 7QE. COMPANY NO. 07557114. VAT NO. GB211239453