



## SPACIOUS FOUR BEDROOM DETACHED FAMILY HOME

---

Arnett Close, Rickmansworth, Hertfordshire, WD3 4DB

**ROBSONS**



# SPACIOUS FOUR BEDROOM DETACHED FAMILY HOME

Arnett Close, Rickmansworth, Herts, WD3 4DB

**KITCHEN • RECEPTION ROOM • DINING  
ROOM • CONSERVATORY • GUEST  
CLOAKROOM • FOUR BEDROOMS • FAMILY  
BATHROOM • ATTACHED GARAGE • FRONT  
GARDEN WITH OWN DRIVEWAY • MATURE  
REAR GARDEN • NO ONWARD CHAIN**

## Description

This spacious four bedroom detached property is situated at the end of a cul-de-sac in a sought after location in Rickmansworth.

The property is in need of renovation and has potential to extend (STPP) to create a fabulous family home. It also has the added benefit of being chain free.

The ground floor accommodation comprises of a large reception room with feature fireplace leading to the conservatory, kitchen with a door to the side, dining room and guest cloakroom.







To the first floor are four good sized bedrooms, three with fitted wardrobes, and the family bathroom.

The property has a pretty front garden with off street parking and an attached garage. The rear garden is mainly laid to lawn with mature bushes and shrubs.

### **Location**

Rickmansworth town centre has a wide range of boutique shops, coffee houses, restaurants and major supermarkets. The Metropolitan and Chiltern line train services connect you to London Baker Street, Marylebone Station and beyond. The M25 motorway is available at both junction 17 and 18, connecting you to the national motorway network. Major London airports are also within reach. The area is well served for good quality private and state schools for all ages. Chorleywood and Rickmansworth offer everything for the sporting individual from rugby, cricket, football, tennis, horse riding, golf, to leisurely countryside walks. Rickmansworth Aquadrome is an ideal setting for walks, sailing, fishing and water skiing.

### **Additional Information**

Tenure: Freehold

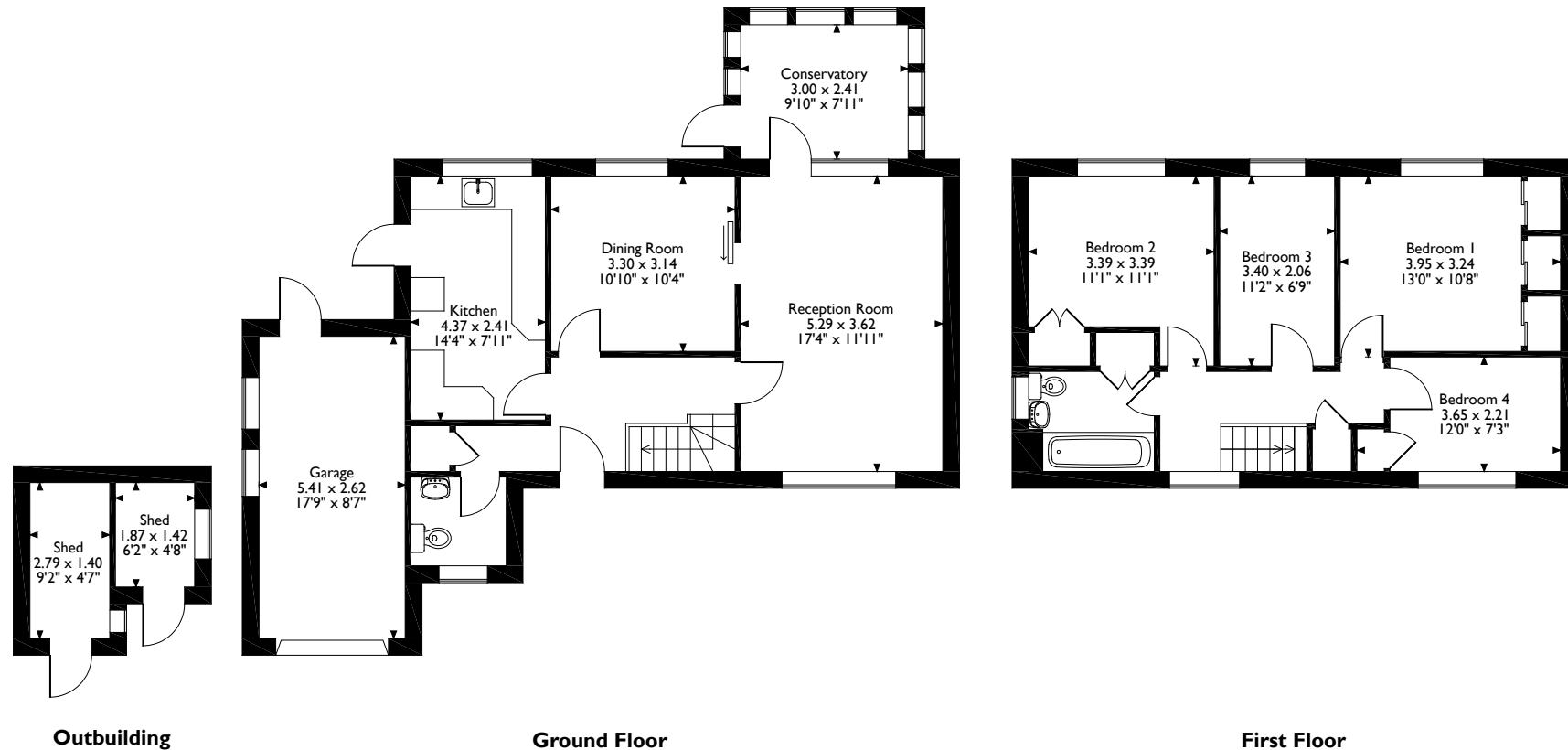
Local Authority: Three Rivers District Council

Energy Efficiency Rating: Band D





Arnett Close, Rickmansworth  
 Approximate Gross Internal Area  
 Main House = 111 Sq M/1195 Sq Ft  
 Garage = 14 Sq M/151 Sq Ft  
 Total = 125 Sq M/1346 Sq Ft



Please note that the location of doors, windows and other items are approximate and this floorplan is to be used for illustrative purposes only. Unauthorized reproduction is prohibited.

**ROBSONS**

130 High Street, Rickmansworth, Hertfordshire, WD3 1AB  
 Tel: 01923 777762 Email: rickmansworth@robsonswb.com

[www.robsonswb.com](http://www.robsonswb.com)

[www.the-londonoffice.co.uk](http://www.the-londonoffice.co.uk)  
 40 ST JAMES'S PLACE SW1

Important notice: Robsons, their clients and any joint agents give notice that 1: They are not authorised to make or give any representations or warranties in relation to the property either here or elsewhere, either on their own behalf or on behalf of their client or otherwise. They assume no responsibility for any statement that may be made in these particulars. These particulars do not form part of any offer or contract and must not be relied upon as statements or representations of fact. 2: Any areas, measurements or distances are approximate. Plot sizes and dimensions are taken from Promap and are approximate. The text, photographs and plans are for guidance only and are not necessarily comprehensive. It should not be assumed that the property has all necessary planning, building regulation or other consents and Robsons have not tested any services, equipment or facilities. Purchasers must satisfy themselves by inspection or otherwise.