



A four bedroom refurbished family home in a convenient location  
Woodford Crescent, Pinner, HA5 3TZ





**Asking Price: £3,250 pcm**

## **A four bedroom refurbished family home in a convenient location**

Woodford Crescent, Pinner, HA5 3TZ

---

• ENTRANCE HALL • LIVING/DINING/KITCHEN • MAIN BEDROOM WITH FITTED WARDROBES • BEDROOM TWO • BATHROOM • SECOND FLOOR - TWO BEDROOMS • SHOWER ROOM AND EAVES STORAGE • REAR GARDEN • DRIVEWAY WITH OFF STREET PARKING • UNFURNISHED

---

### **Description**

A refurbished detached four bedroom, two bathroom, elegant family home offering stylish and modern interiors. To the ground floor is a modern family bathroom, two ground floor double bedrooms, an impressive kitchen/dining/living room with bi-folding doors to the garden and a utility room. The kitchen has modern units with high-specification integrated appliances. To the first floor are two large double bedrooms with access to eaves storage space and a luxury bathroom.

**\*\* An advance reservation payment of one weeks rent is required to secure the property \*\***

### **Location**

Situated in a convenient location the property is ideally located close by to local highly regarded schools and Pinner's wide choice of amenities. Pinner offers a variety of boutique shops, restaurants, coffee houses and popular supermarkets. Transport facilities include local bus links and the Metropolitan Line at Pinner tube station, providing a fast and frequent service into the heart of Central London and beyond. The area is well served for primary and secondary schooling, children's parks/playgrounds and recreational facilities.

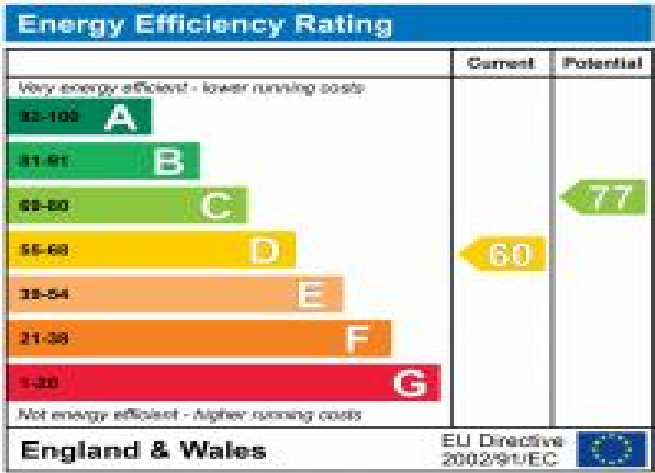




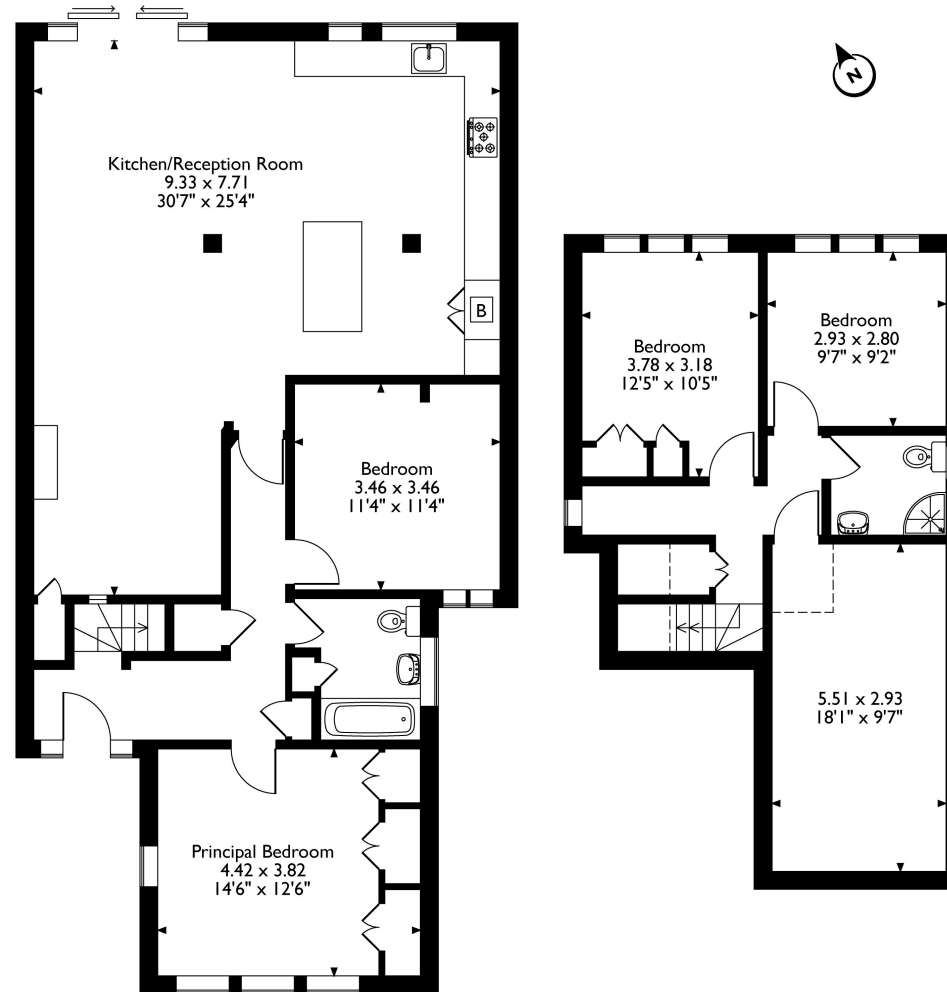


### Additional Information

- Local Authority: Harrow
- Council Tax Band: F
- Deposit Amount: £3,692.00
- Reservation Payment: One weeks rent
- Energy Efficiency Rating: Band D
- Available Date: 20/08/2025



Woodford Crescent, Pinner, HA5 3TZ  
Approximate Gross Internal Area  
142 Sq M/1529 Sq Ft



**Ground Floor**

**First Floor**

Please note that the location of doors, windows and other items are approximate and this floorplan is to be used for illustrative purposes only. Unauthorized reproduction is prohibited.



REGISTERED OFFICE 2-4 PACKHORSE ROAD, GERRARDS CROSS, BUCKINGHAMSHIRE, ENGLAND, SL9 7QE. COMPANY NO. 07557114. VAT NO. GB211239453