



A brand new luxury two bedroom apartment in an exclusive gated development
Eastbury Avenue, Northwood, HA6 3FL

ROBSONS

Asking Price: £2,800 pcm

A brand new luxury two bedroom apartment in an exclusive gated development

Eastbury Avenue, Northwood, HA6 3FL

• BRAND NEW LUXURY APARTMENT • ENTRANCE HALL • OPEN PLAN KITCHEN/LOUNGE/DINING ROOM • MASTER BEDROOM WITH ENSUITE BATHROOM & BALCONY • SECOND BEDROOM • BATHROOM • TWO ALLOCATED UNDERGROUND SPACES • COMMUNAL GARDEN • PART FURNISHED

Description

A brand new luxury two bedroom apartment situated within an exclusive gated development. The apartment consists of entrance hall, kitchen with integrated Bosch appliances, open plan living/dining room with balcony, master bedroom with ensuite shower and Juliet balcony, second bedroom and designer bathroom. Other features include two allocated underground parking spaces, communal gardens with amenity space, secure cycle storage, audio & video entry system, underfloor heating with individual room control. The property is offered part furnished and has been finished to very a high standard throughout.

** An advance reservation payment of one weeks rent is required to secure the property **

Location

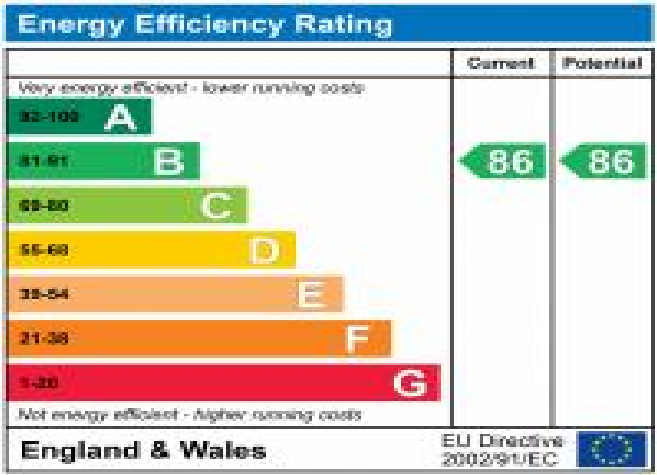
Northwood provides a range of shopping facilities including Waitrose supermarket, a variety of restaurants and other amenities with the Metropolitan Line station providing access to Baker Street and the City. There is a plethora of state and private schooling together with a wide choice of recreational facilities, which include golf courses and fitness centres. The M1, M40 and M25 motorways are also accessible.



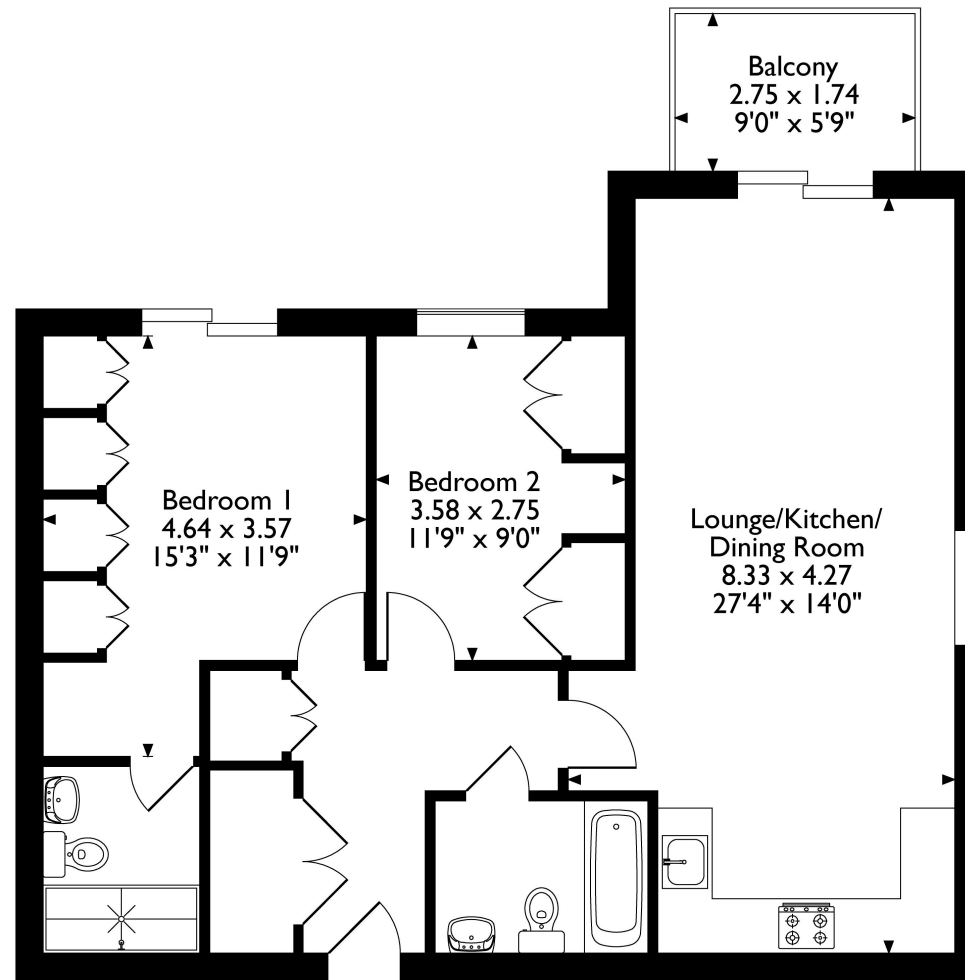


Additional Information

- Local Authority: Three Rivers
- Council Tax Band: F
- Deposit Amount: £3,230.00
- Reservation Payment: One weeks rent
- Energy Efficiency Rating: Band B
- Available Date: 15/04/2024



Asteria Place, Eastbury Avenue, Northwood, Middlesex, HA6 3FL
Approximate Gross Internal Area
74 Sq M/797 Sq Ft



First Floor

Please note that the location of doors, windows and other items are approximate and this floorplan is to be used for illustrative purposes only. Unauthorized reproduction is prohibited.

