



A brand new two bedroom, two bathroom apartment with private terrace
The Drive, Ickenham, UB10 8GD

ROBSONS

Asking Price: £3,000 pcm

A brand new two bedroom, two bathroom apartment with private terrace

The Drive, Ickenham, UB10 8GD

• GROUND FLOOR • HIGH SPEC FITTED KITCHEN • OPEN PLAN DINING/LOUNGE LEADING ONTO TERRACE • UTILITY ROOM • TWO DOUBLE BEDROOMS WITH ENSUITE • SEPARATE GUEST CLOAKROOM • PRIVATE TERRACE • ONE ALLOCATED SPACE • UNFURNISHED

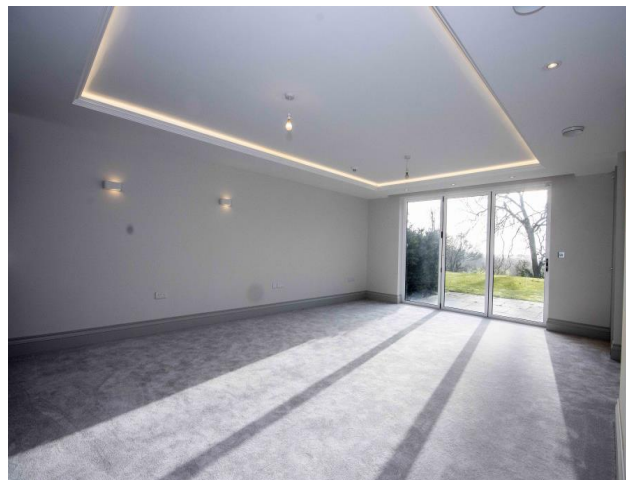
Description

Robsons are proud to present this brand new two bedroom, two bathroom apartment with private terrace located in the new contemporary building at Harefield Place, Ickenham. The property consists of entrance hallway, utility room, open plan high spec fitted kitchen, reception room and two double bedrooms both with an en-suite. Features include a leisure complex for residents including swimming pool, sauna, jacuzzi & gym. Secure underground parking for one car and an additional storage unit. Access available to communal Tennis courts and a private lake. The property is offered unfurnished.

****An advance reservation payment of one weeks rent is required to secure this property****

Location

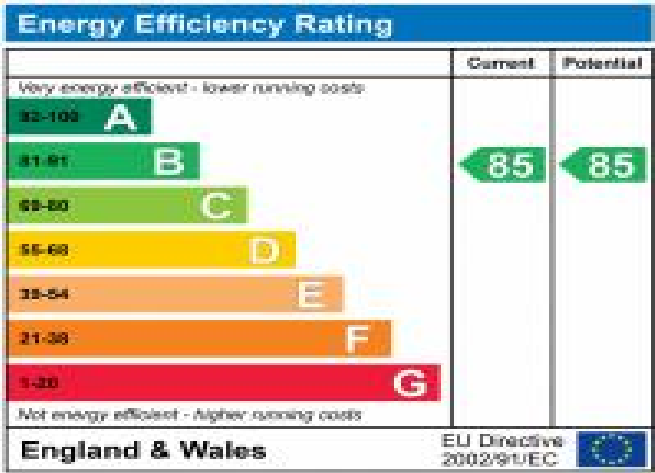
Harefield Place, located on The Drive in Ickenham which is one of the most sought after locations in Middlesex, is an exclusive development of just 25 extraordinary apartments (nine of which are located in the Georgian Mansion & 16 in the new contemporary building) which are positioned on an amazing plot of 8.5 acres of landscaped garden.





Additional Information

- Local Authority: Hillingdon
- Council Tax Band: G
- Deposit Amount: £3,461.00
- Reservation Payment: One weeks rent
- Energy Efficiency Rating: Band B
- Available Date: 27/03/2024



3 BROMPTON HOUSE

2 BEDROOM

GARDEN FLOOR

Two bedroom garden floor apartment, located close to the leisure complex, with bi-fold doors opening onto a spacious, south facing terrace.

CONTEMPORARY COLLECTION

ROOM DIMENSIONS

Drawing Room / Dining / Kitchen	10.12m x 4.71m	33' 2" x 15' 5"
Master Bedroom	5.62m x 2.75m	18' 5" x 9' 0"
Bedroom 2	4.63m x 2.91m	15' 2" x 9' 7"
Total Area	111 sq m	1,204 sq ft
Outside Area	44 sq m	475 sq ft

KEY

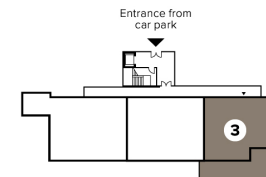
C Cupboard

W Wardrobe



Floor plans shown are not to scale and ratio may differ to other plans in this document.
Apartment layouts are for guidance only. All dimensions are subject to change.

44



GARDEN FLOOR

ROBSON'S



REGISTERED OFFICE 2-4 PACKHORSE ROAD, GERRARDS CROSS, BUCKINGHAMSHIRE, ENGLAND, SL9 7QE. COMPANY NO. 07557114. VAT NO. GB211239453