



A beautifully presented one bedroom maisonette
Church Lane, Pinner, Middlesex HA5 3AB



Asking Price: £1,350 pcm

A beautifully presented one bedroom maisonette

Church Lane, Pinner, Middlesex HA5 3AB

• ENTRANCE HALL • OPEN PLAN LIVING/KITCHEN/DINING AREA • BEDROOM WITH WARDROBES • SHOWER ROOM • CONVENIENTLY LOCATED CLOSE TO LOCAL AMENITIES • UNFURNISHED

Description

Robsons are pleased to offer this beautifully presented one bedroom maisonette situated in the grounds of a property in the centre of Pinner village. A short walk to shops, restaurants and the Pinner Met Line station. The property comprises open plan living area, modern fully fitted kitchen with all major appliances, bedroom with fitted wardrobe, shower room with w.c and utility cupboard. The property is offered unfurnished.

**** An advance reservation payment of one weeks rent is required to secure this property****

Location

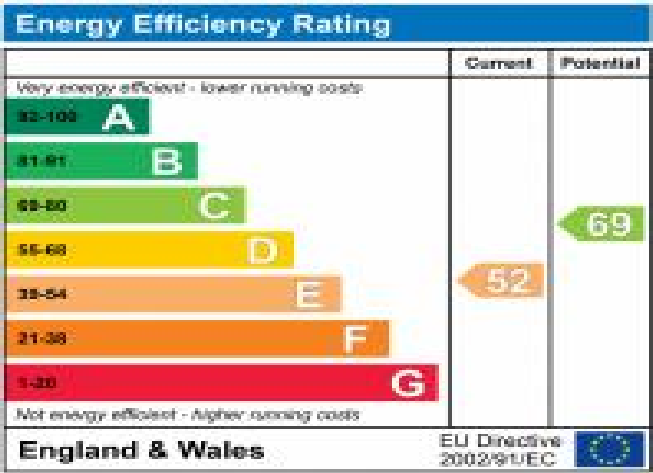
Located in the heart of the Village on one of Pinner's desired roads, just moments from both Pinner and Hatch End's amenities offering a variety of boutique shops, restaurants, coffee houses and popular supermarkets. Transport facilities include local bus links and the Metropolitan Line at Pinner tube station, with the Overground at Hatch End rail station. The area is well served for primary and secondary schooling, children's parks/playgrounds and recreational facilities.



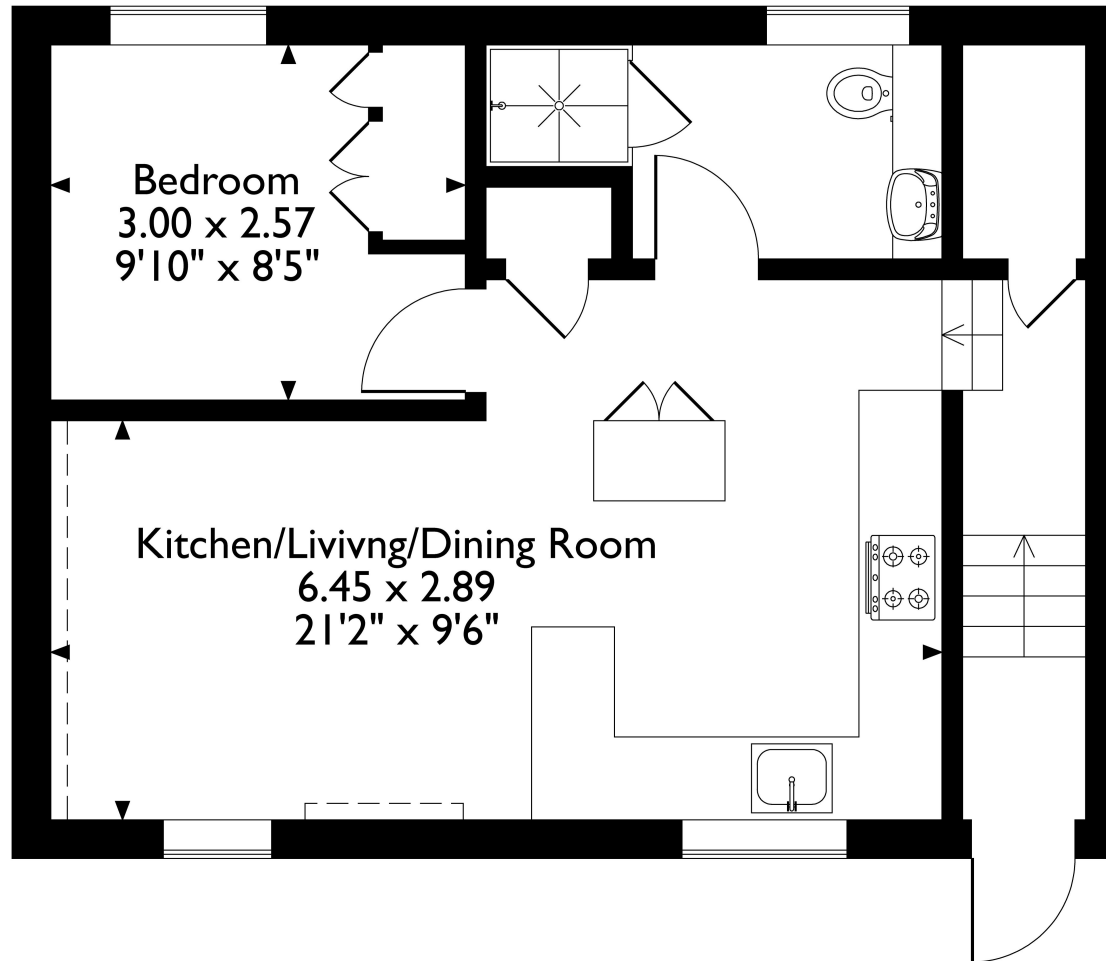


Additional Information

- Local Authority: Harrow
- Council Tax Band: B
- Deposit Amount: £1,557.00
- Reservation Payment: One weeks Rent
- Energy Efficiency Rating: Band E
- Available Date: 07/10/2024



Littleholm, Church Lane, Pinner, Middlesex, HA5 3AB
Approximate Gross Internal Area
42 Sq M/452 Sq Ft



Please note that the location of doors, windows and other items are approximate and this floorplan is to be used for illustrative purposes only. Unauthorized reproduction is prohibited.

