



A four bedroom family home in a convenient location
Parker Street, Watford, WD24 5EY



Asking Price: £2,000 pcm

A four bedroom family home in a convenient location

Parker Street, Watford, WD24 5EY

• ENTRANCE HALL • LIVING ROOM • KITCHEN/DINING ROOM • GROUND FLOOR BATHROOM • THREE BEDROOMS • SHOWER ROOM • REAR GARDEN • UNFURNISHED

Description

A spacious four double bedroom family home located on popular residential road in Watford. The property comprises, entrance hall, front living room, dining room, kitchen with appliances, ground floor bathroom, four double bedrooms with storage, a family shower room and a rear garden.

**** An advance reservation payment of one weeks rent is required to secure the property ****

Location

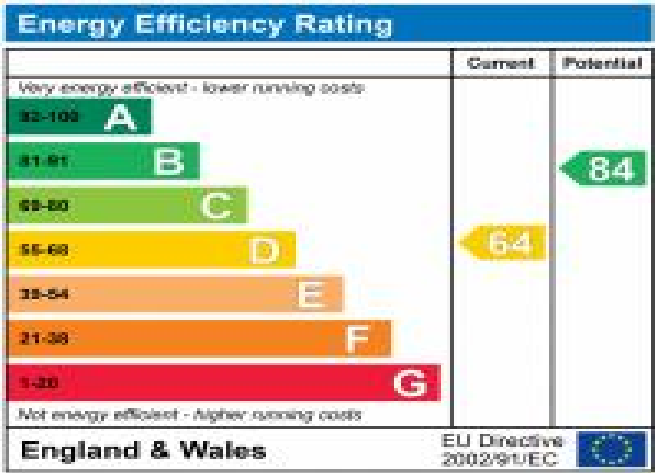
Watford Junction station is approximately 10 minutes walk from the door, making it ideal for the busy commuter, with the M25, M1 and A41 road links also a short drive away. St. Alban's Road offers an eclectic mix of shops, restaurants, cafe's and pubs catering for every taste. The ASDA and Sainsbury's superstores are also just a few minutes drive away.



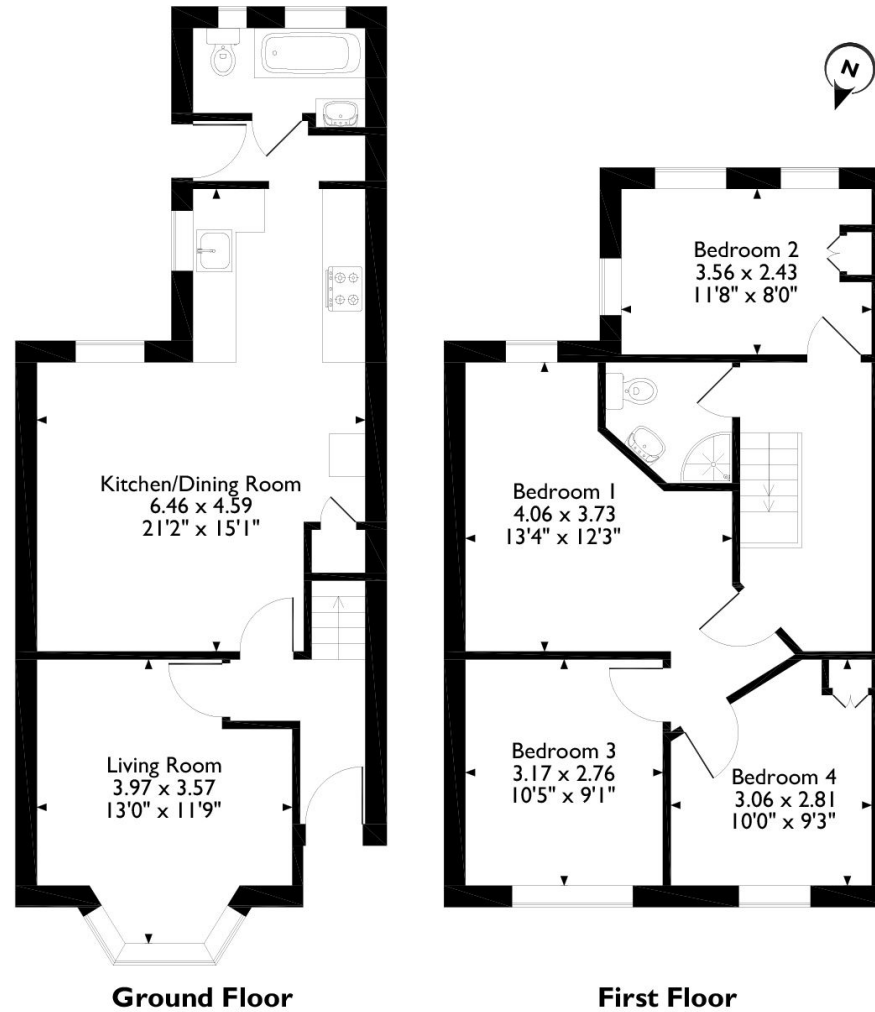


Additional Information

- Locall Authority: Watford
- Council Tax Band: C
- Deposit Amount: £2,307.00
- Reservation Payment: One weeks rent
- Energy Efficiency Rating: Band D
- Available Date: 13/03/2024



Parker Street, Watford, Hertfordshire, WD24 5EY
Approximate Gross Internal Area
95 Sq M/1022 Sq Ft



Please note that the location of doors, windows and other items are approximate and this floorplan is to be used for illustrative purposes only. Unauthorized reproduction is prohibited.



REGISTERED OFFICE 2-4 PACKHORSE ROAD, GERRARDS CROSS, BUCKINGHAMSHIRE, ENGLAND, SL9 7QE. COMPANY NO. 07557114. VAT NO. GB211239453



A four bedroom family home in a convenient location
Parker Street, Watford, WD24 5EY



Asking Price: £2,000 pcm

A four bedroom family home in a convenient location

Parker Street, Watford, WD24 5EY

• ENTRANCE HALL • LIVING ROOM • KITCHEN/DINING ROOM • GROUND FLOOR BATHROOM • THREE BEDROOMS • SHOWER ROOM • REAR GARDEN • UNFURNISHED

Description

A spacious four double bedroom family home located on popular residential road in Watford. The property comprises, entrance hall, front living room, dining room, kitchen with appliances, ground floor bathroom, four double bedrooms with storage, a family shower room and a rear garden.

**** An advance reservation payment of one weeks rent is required to secure the property ****

Location

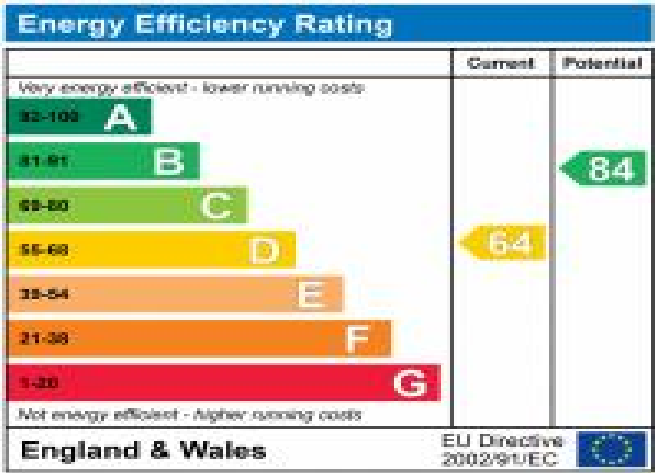
Watford Junction station is approximately 10 minutes walk from the door, making it ideal for the busy commuter, with the M25, M1 and A41 road links also a short drive away. St. Alban's Road offers an eclectic mix of shops, restaurants, cafe's and pubs catering for every taste. The ASDA and Sainsbury's superstores are also just a few minutes drive away.



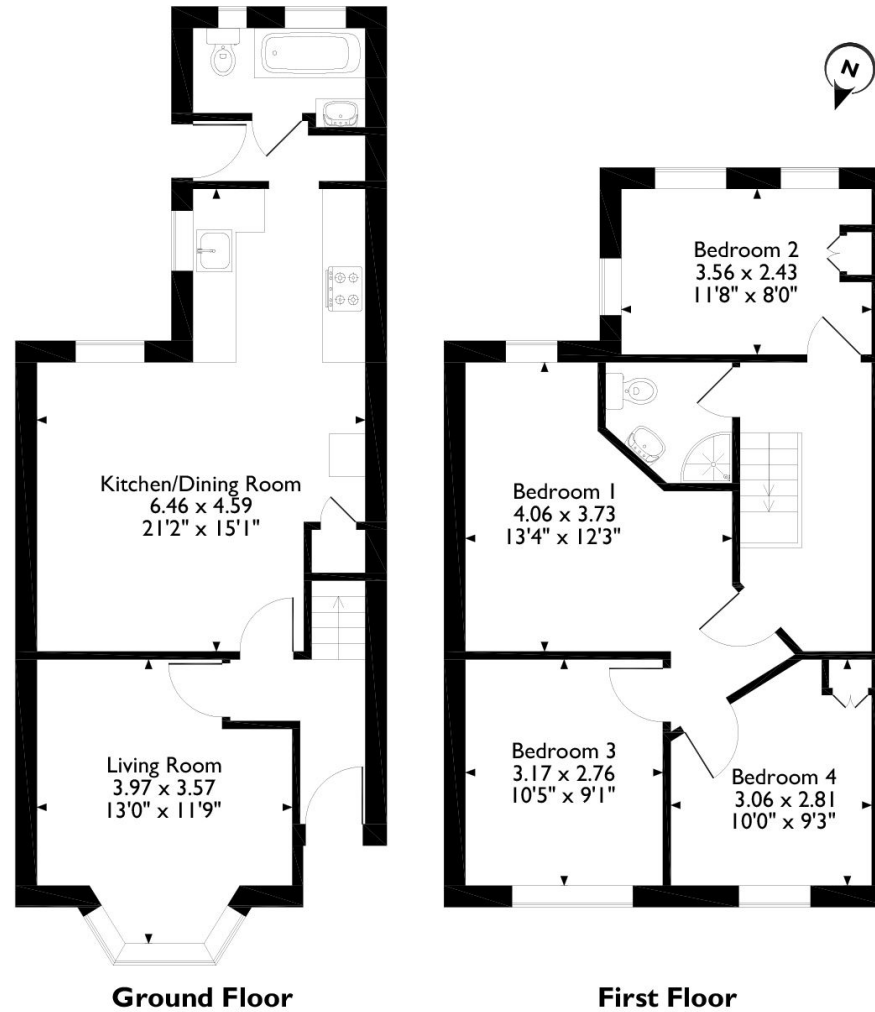


Additional Information

- Locall Authority: Watford
- Council Tax Band: C
- Deposit Amount: £2,307.00
- Reservation Payment: One weeks rent
- Energy Efficiency Rating: Band D
- Available Date: 13/03/2024



Parker Street, Watford, Hertfordshire, WD24 5EY
Approximate Gross Internal Area
95 Sq M/1022 Sq Ft



Please note that the location of doors, windows and other items are approximate and this floorplan is to be used for illustrative purposes only. Unauthorized reproduction is prohibited.



REGISTERED OFFICE 2-4 PACKHORSE ROAD, GERRARDS CROSS, BUCKINGHAMSHIRE, ENGLAND, SL9 7QE. COMPANY NO. 07557114. VAT NO. GB211239453