



A five bedroom, four bathroom family home in a sought after location
Bishop Ramsey Close, Ruislip, Middlesex HA4 8GY



Asking Price: £4,000 pcm

A five bedroom, four bathroom family home in a sought after location

Bishop Ramsey Close, Ruislip, Middlesex HA4 8GY

• LARGE LOUNGE • KITCHEN/BREAKFAST ROOM • CONSERVATORY • GUEST CLOAKROOM • FIVE BEDROOMS - THREE WITH ENSUITES • SHOWER ROOM • OFF STREET PARKING • GARAGE • UNFURNISHED

Description

An attractive five bedroom, four bathroom detached family home set on a private gated road. With a large front aspect lounge and an impressive kitchen / breakfast room with modern fitted units and high-specification integrated appliances. Off the kitchen is a second reception room with patio doors to the garden. To the first floor are four bedrooms, the principal bedroom with fitted wardrobes and a en-suite. There is a second large double bedroom with an en-suite shower room and a dressing room and a luxury bathroom. The second floor is a double bedroom with ensuite bathroom. To the rear is well-presented garden and to the front there is a driveway and a garage.

**** An advance reservation payment of one weeks rent is required to secure the property ****

Location

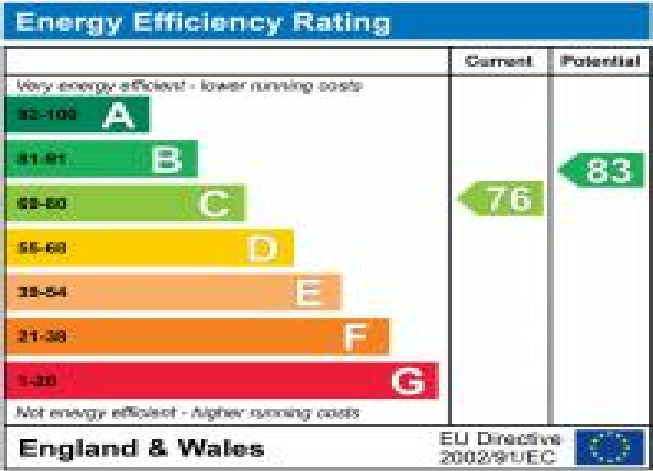
Located off Eastcote Road just a short walk from both Ruislip and Ruislip Manor's bustling high streets and a range of shopping facilities, restaurants, coffee houses and popular supermarkets. For commuters, the Metropolitan Line and the Piccadilly Line can be accessed at both Ruislip and Ruislip Manor underground stations, with nearby West Ruislip providing the Central Line. The area is well served by local primary and secondary schooling, children's parks/playgrounds and recreational facilities and a number of highly-regarded schools close by.



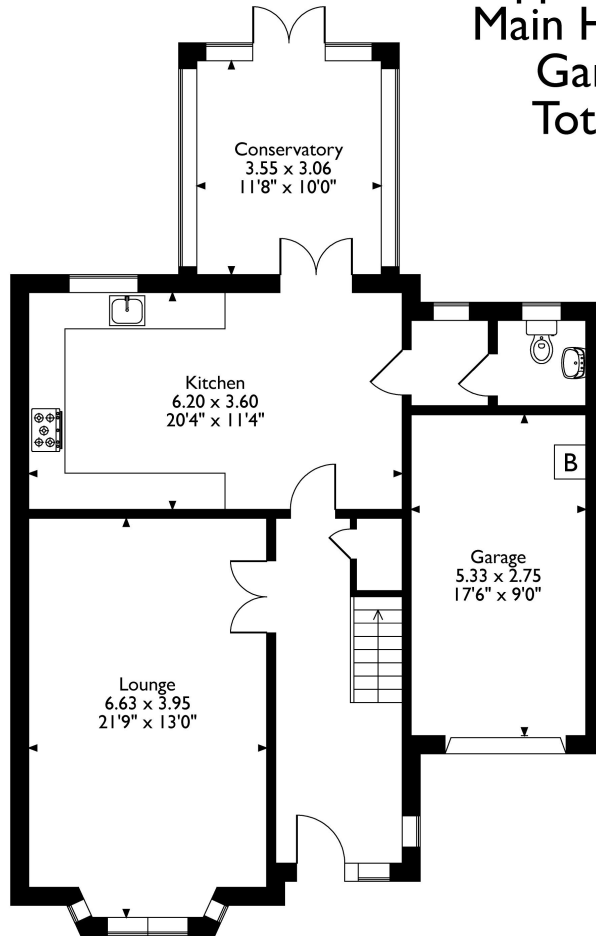


Additional Information

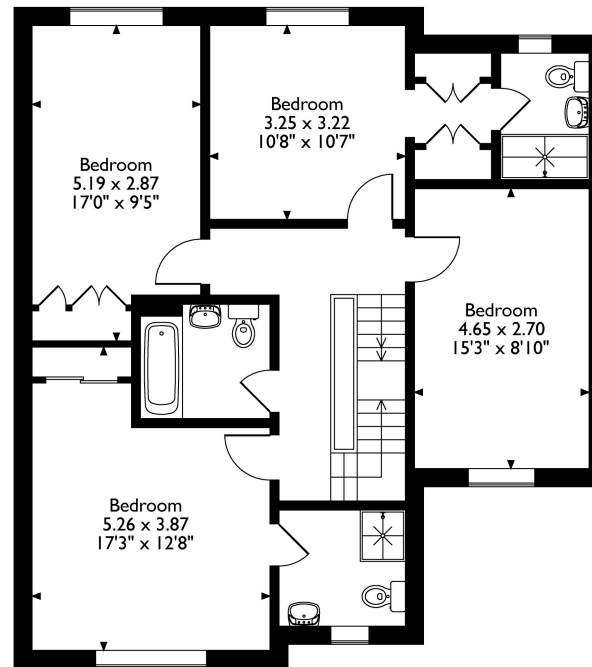
- Local Authority: Hillingdon
- Council Tax Band: G
- Deposit Amount: £4,846.00
- Reservation Payment: One weeks rent
- Energy Efficiency Rating: Band C
- Available Date: 13/12/2024



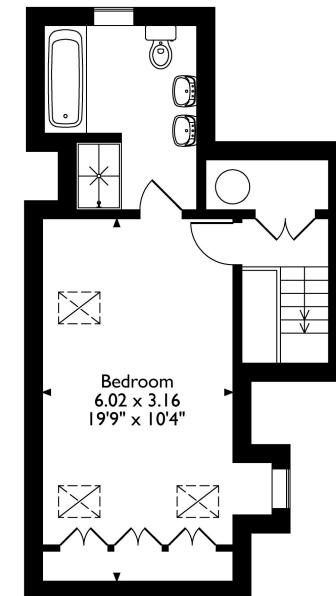
Bishop Ramsey Close, Ruislip, HA4 8GY
 Approximate Gross Internal Area
 Main House = 196 Sq M/2110 Sq Ft
 Garage = 15 Sq M/161 Sq Ft
 Total = 210 Sq M/2271 Sq Ft



Ground Floor



First Floor



Second Floor

Please note that the location of doors, windows and other items are approximate and this floorplan is to be used for illustrative purposes only. Unauthorized reproduction is prohibited.

