



A spacious 3 bedroom first floor maisonette with private garden  
Mildred Avenue, Watford, WD18 7DU

**ROBSONS**



**Asking Price: £1,950 pcm**

## **A spacious 3 bedroom first floor maisonette with private garden**

Mildred Avenue, Watford, WD18 7DU

- 
- ENTRANCE HALL WITH STAIRS TO FIRST FLOOR •
  - LIVING/DINING ROOM • KITCHEN WITH FITTED APPLIANCES •
  - MODERN BATHROOM • TWO DOUBLE BEDROOMS WITH STORAGE • FURTHER BEDROOM • PRIVATE REAR GARDEN •
  - FURNISHED OR UNFURNISHED
- 

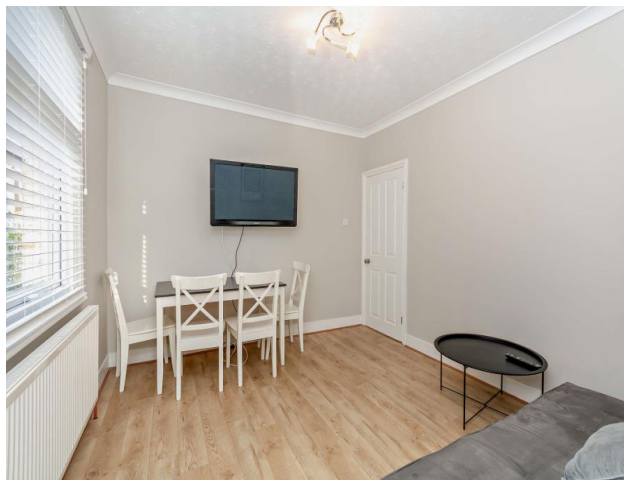
### **Description**

A bright and spacious three bedroom maisonette located in the heart of Watford. The first floor property consists, entrance hall, a large master bedroom with storage, a large second bedroom with storage, a further third bedroom, living room, kitchen with fitted appliances and a modern family bathroom. On street permit parking is available directly outside the property.

**\*\* An advance reservation payment of one weeks rent is required to secure the property \*\***

### **Location**

Watford town centre is close by providing an extensive choice of boutique shops, restaurants, coffee houses, supermarkets and the Intu shopping centre. Transport facilities include the Metropolitan Line and Main Line train stations offering a frequent service into central London and beyond. There is an excellent selection of schools both private and state including Watford Grammar School for Boys and Watford Grammar School for Girls.

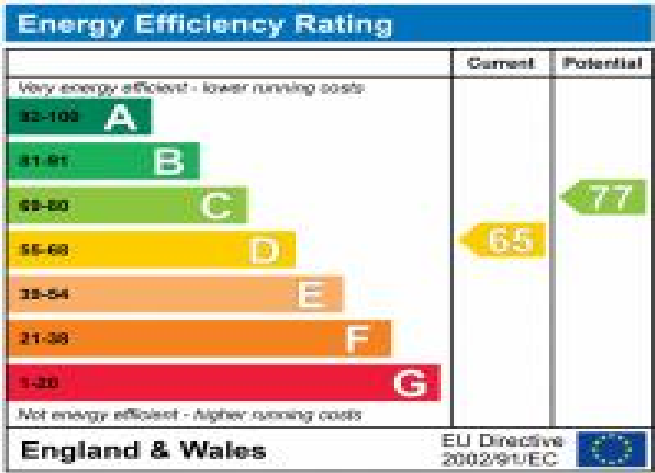




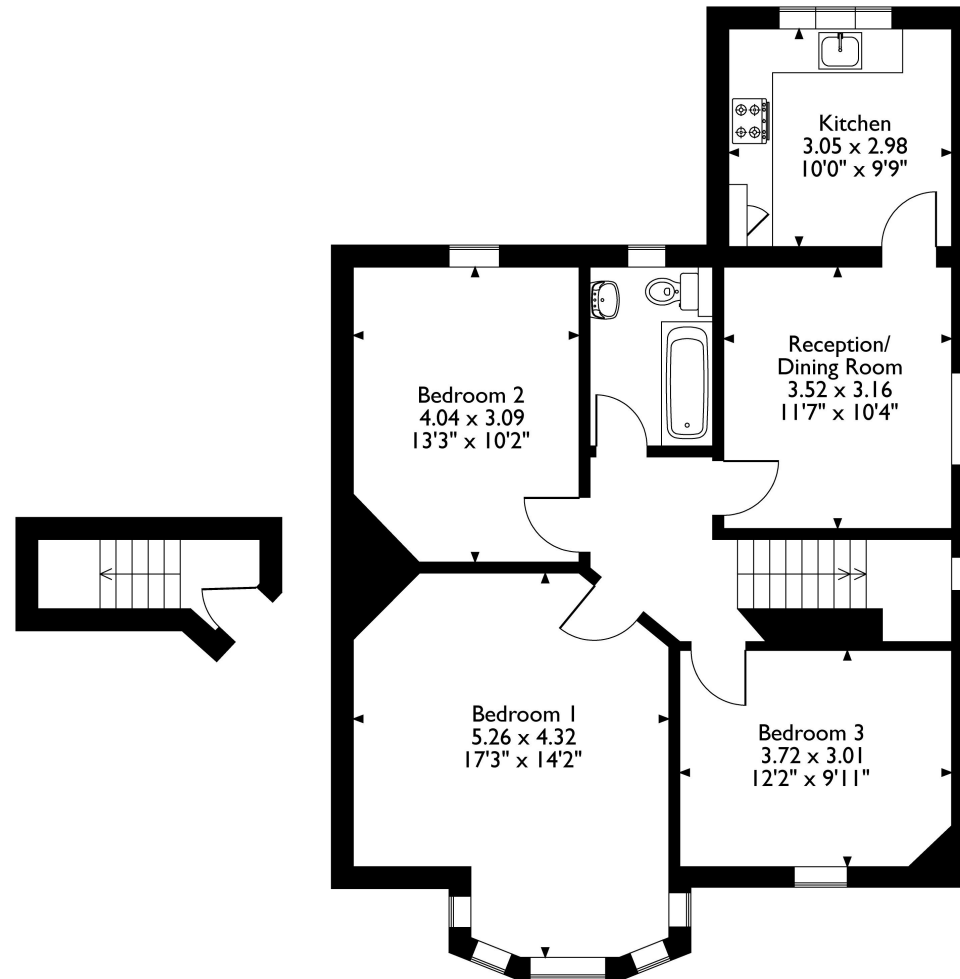


Additional Information

- Local Authority: Watford
- Council Tax Band: C
- Deposit Amount: £2,250.00
- Reservation Payment: One weeks rent
- Energy Efficiency Rating: Band D
- Available Date: 24/01/2024



Mildred Avenue, Watford, Hertfordshire, WD18 7DU  
Approximate Gross Internal Area  
83 Sq M/893 Sq Ft



### Ground Floor

### First Floor Flat

Please note that the location of doors, windows and other items are approximate and this floorplan is to be used for illustrative purposes only. Unauthorized reproduction is prohibited.

