



A charming two double bedroom family home in a popular location
Wiltshire Lane, Eastcote, HA5 2NA



Asking Price: £2,200 pcm

A charming two double bedroom family home in a popular location

Wiltshire Lane, Eastcote, HA5 2NA

• LIVING ROOM • KITCHEN, OPEN PLAN TO DINING ROOM • CONSERVATORY • TWO BEDROOMS • NEW BATHROOM & SEPARATE WC • PRIVATE REAR GARDEN • REDECORATED • UNFURNISHED

Description

A charming two double bedroom family home located on a popular residential location. The terrace property has been completely redecorated throughout and comprises, entrance hall, kitchen with appliances, dining room, lounge, conservatory, two large double bedrooms with fitted wardrobes and a brand new bathroom with separate W/C. Further features include a private rear garden with patio and brand new double glazing fitted throughout the property.

**** An advance reservation payment of one weeks rent is required to secure the property ****

Location

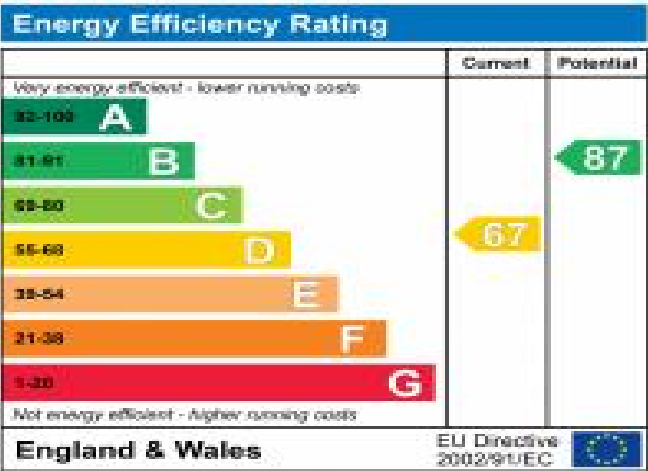
Situated within easy reach of both Pinner, Northwood Hills and Eastcote's shops, restaurants, coffee houses and popular supermarkets. Transport facilities include local bus links and the Metropolitan Line at Pinner, Northwood Hills and Eastcote station's providing a fast and frequent service into the heart of Central London and beyond. Coteford Primary School and Haydon Secondary School are within close proximity as well as children's parks/playgrounds and recreational facilities.





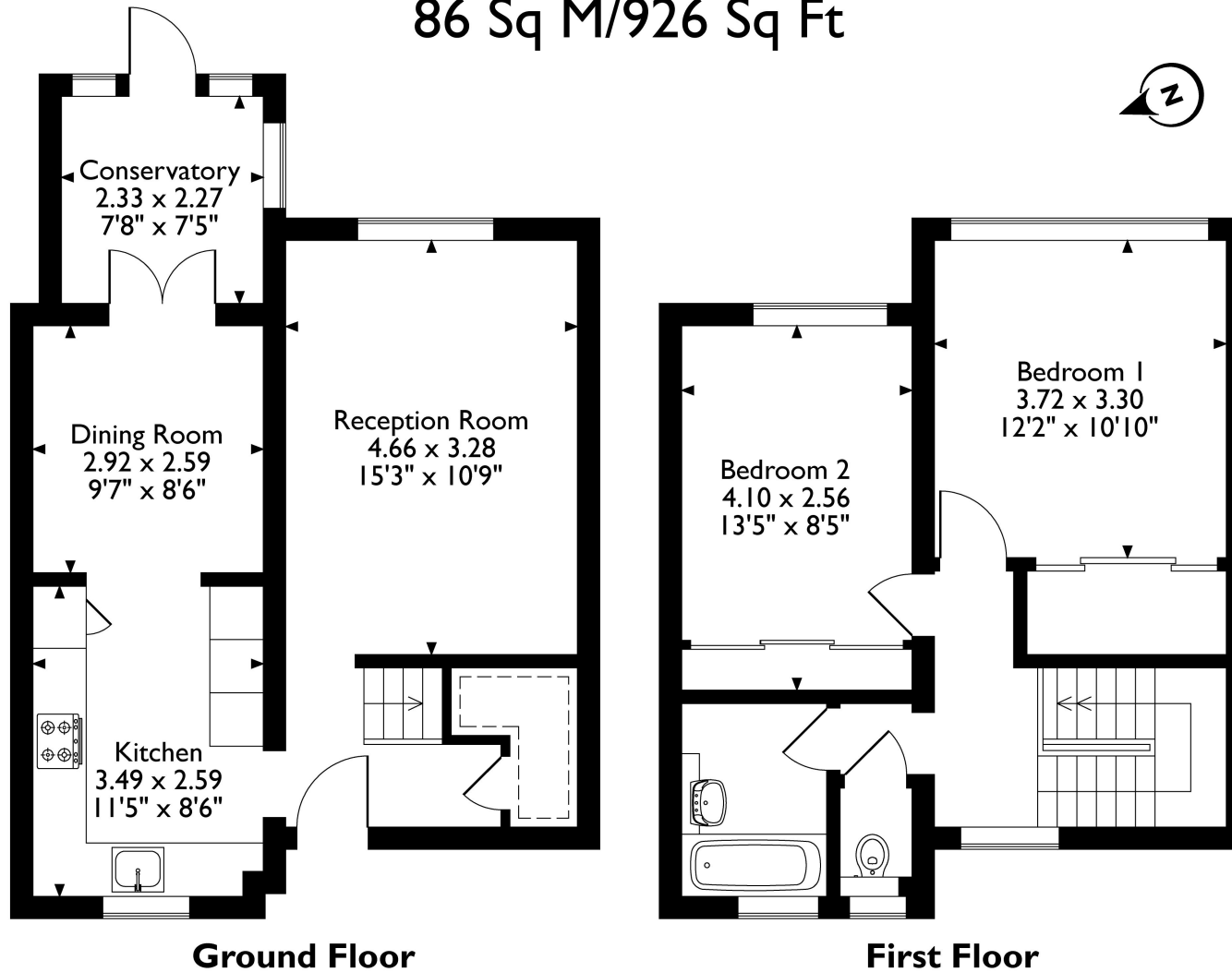
Additional Information

- Local Authority: London Borough of Hillingdon
- Council Tax Band: D
- Deposit Amount: £2,538.00
- Reservation Payment: One weeks rent
- Energy Efficiency Rating: Band D
- Available Date: 31/01/2024



Wiltshire Lane, Pinner, Hertfordshire, HA5 2NA

Approximate Gross Internal Area 86 Sq M/926 Sq Ft



Please note that the location of doors, windows and other items are approximate and this floorplan is to be used for illustrative purposes only. Unauthorized reproduction is prohibited.



REGISTERED OFFICE 2-4 PACKHORSE ROAD, GERRARDS CROSS, BUCKINGHAMSHIRE, ENGLAND, SL9 7QE. COMPANY NO. 07557114. VAT NO. GB211239453