



A two bedroom first floor flat in a convenient location with own garden
Tolcarne Drive, Pinner, Middlesex HA5 2DH

ROBSONS

Asking Price: £1,650 pcm

A two bedroom first floor flat in a convenient location with own garden

Tolcarne Drive, Pinner, Middlesex HA5 2DH

• FIRST FLOOR MAISONETTE • MODERN FITTED KITCHEN • TWO DOUBLE BEDROOMS • RECEPTION ROOM • FAMILY BATHROOM • FRONT & REAR GARDEN • CLOSE TO AMENITIES & TRANSPORT LINKS • ON STREET PARKING • UNFURNISHED

Description

A two bedroom first floor maisonette that has been recently refurbished to high standard throughout, the accommodation briefly comprises a bright and welcoming reception room, two generous size double bedrooms, a stylish family bathroom and a modern fitted kitchen with integrated appliances. Externally the property benefits from a share of the front and private rear garden.

**** An advance reservation payment of one weeks rent is required to secure the property ****

Location

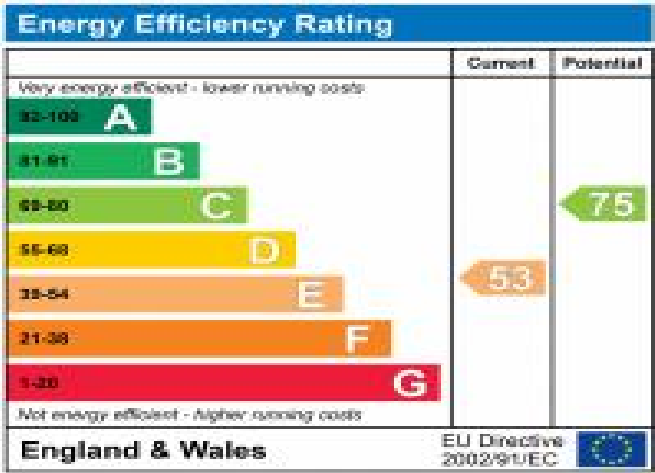
Located off Joel Street within walking distance of Northwood Hills High street and the local amenities. There are excellent transport facilities close by with the Metropolitan line available at Northwood Hills station, as well as numerous local bus routes. Alternatively, Eastcote and Pinner high streets are just a short distance away. The area is well served by primary and secondary schooling, childrens play areas and recreational facilities.



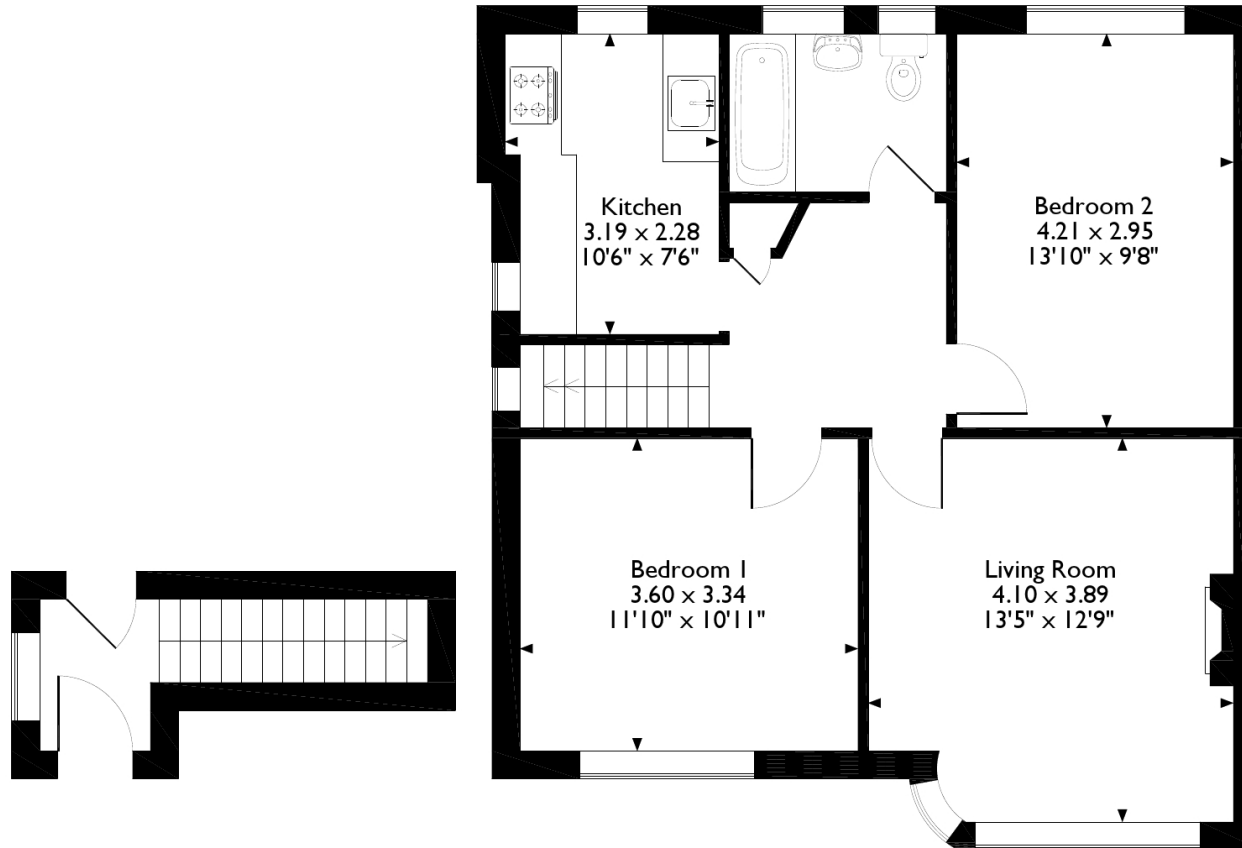


Additional Information

- Local Authority: Hillingdon
- Council Tax Band: D
- Deposit Amount: £1,903.00
- Reservation Payment: One weeks rent
- Energy Efficiency Rating: Band E
- Available Date: 05/11/2025



Tolcarne Drive, Pinner
Approximate Gross Internal Area
66 Sq M/703 Sq Ft



Ground Floor

First Floor

Please note that the location of doors, windows and other items are approximate and this floorplan is to be used for illustrative purposes only. Unauthorized reproduction is prohibited.

