



A two bedroom ground floor maisonette in a convenient location  
Little Orchard Close, Pinner, HA5 3DR

**ROBSONS**



**Asking Price: £1,700 pcm**

## **A two bedroom ground floor maisonette in a convenient location**

Little Orchard Close, Pinner, HA5 3DR

---

• GROUND FLOOR MAISONETTE • FITTED KITCHEN • LOUNGE • TWO BEDROOMS • FAMILY BATHROOM • ON STREET PARKING • COMMUNAL GARDEN • UNFURNISHED

---

### **Description**

The property comprises a spacious entrance hallway with two useful store/cloak cupboards, a large living/dining room with French doors opening out to a private patio area overlooking the communal gardens, a well-equipped, fitted kitchen and two generous bedrooms. Completing the property is a bathroom with a separate WC and a small utility room.

**\*\*An advance reservation payment of one weeks is required to secure this property\*\***

### **Location**

Located off Barrow Point Lane, this property is situated on a peaceful close just moments from Pinner Village and a variety of shops, restaurants, coffee houses and supermarkets. For commuters, the Metropolitan line is available at Pinner Station and offers frequent services into London. Alternatively, the Overground is accessible at Hatch End station just a few minutes away. The area is well served by local primary and secondary schooling, leisure facilities and recreational facilities.

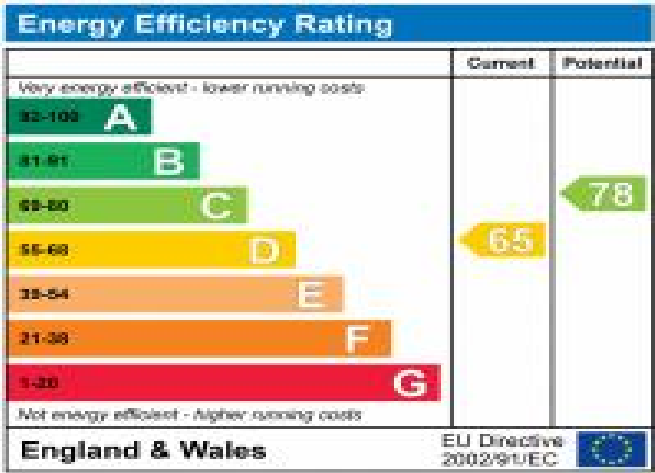






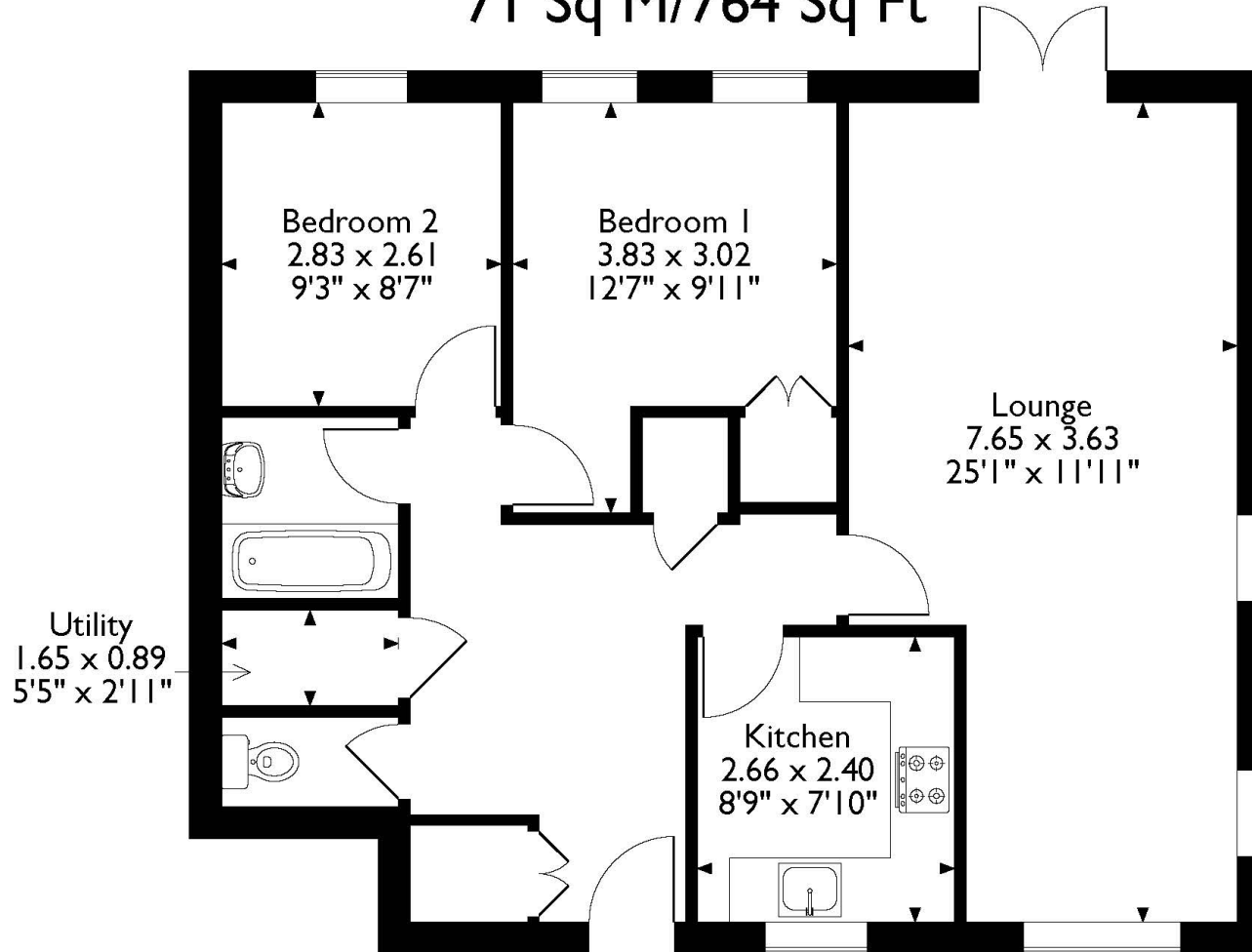
### Additional Information

- Local Authority
- Council Tax Band: D
- Deposit Amount: £1,846.00
- Reservation Payment: One weeks rent
- Energy Efficiency Rating: Band D
- Available Date: 27/10/2023



# Little Orchard Close, Pinner

## Approximate Gross Internal Area 71 Sq M/764 Sq Ft



### Ground Floor Flat

Please note that the location of doors, windows and other items are approximate and this floorplan is to be used for illustrative purposes only. Unauthorized reproduction is prohibited.

