



A luxury apartment in a convenient location  
Bury Street, Ruislip, Middlesex HA4 7TL



**Asking Price: £1,950 pcm**

## **A luxury apartment in a convenient location**

Bury Street, Ruislip, Middlesex HA4 7TL

---

- COMMUNAL ENTRANCE HALL WITH VIDEO ENTRYPHONE SYSTEM
- ENTRANCE HALL
- OPEN PLAN KITCHEN/LIVING ROOM
- BATHROOM
- MAIN BEDROOM WITH BALCONY
- SECOND BEDROOM
- UNDERFLOOR HEATING
- PARKING BAY WITH ELECTRIC CAR CHARGER
- PART FURNISHED

---

### **Description**

Robsons are delighted to offer for rent this spacious apartment with lots of added extras in this luxury development. The accommodation briefly comprises; hallway, open plan reception room and kitchen, a bathroom with a walk in shower. plus a small Veranda/patio area. In addition there is a parking bay. Added extras include: smart underfloor heating and ventilation system (keeping the flat cooler in the summer and warmer in the winter months) Video entry phone system, parking bay with electric car charger, integrated appliances in the kitchen. Partially furnished bedroom.

**\*\* An advance reservation payment of one weeks rent is required to secure the property \*\***

### **Location**

The development is situated on Bury street, just before Reservoir Road. A couple minutes walk to the H13 bus stop to Ruislip Station. A few minutes drive to the A40 providing good connections to the M40 and M25 for London and the Home Counties.

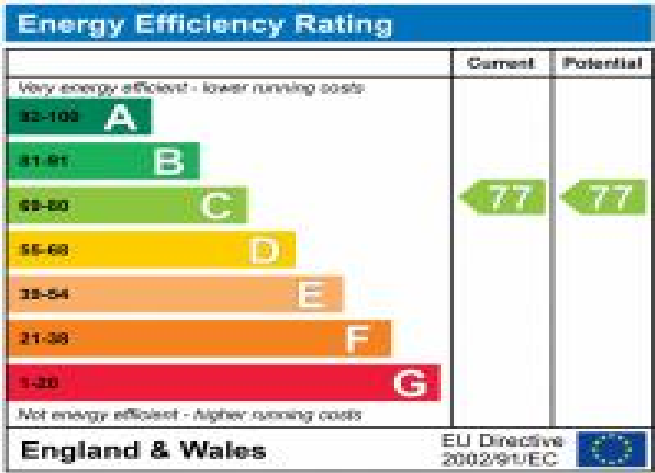




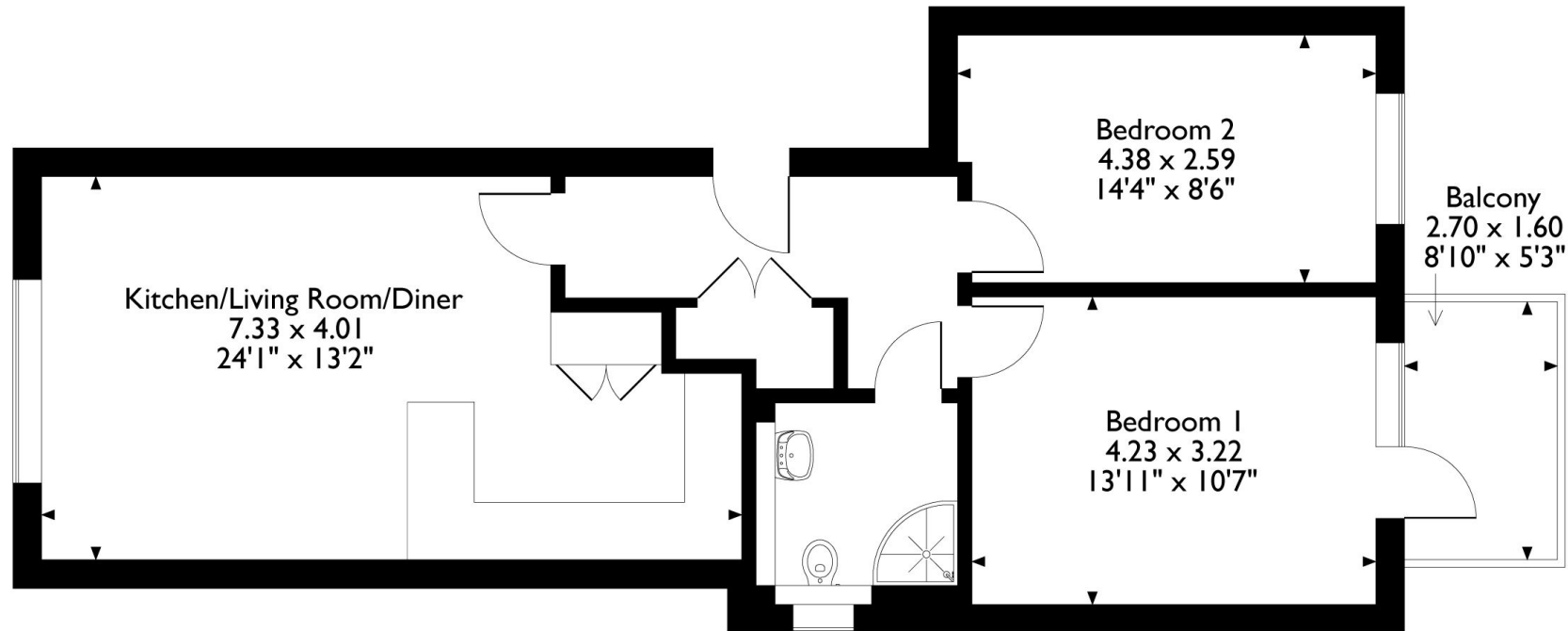


**Additional Information**

- Local Authority: Hillingdon
- Council Tax Band: D
- Deposit Amount: £2,307.00
- Reservation Payment: One weeks Rent
- Energy Efficiency Rating: Band C
- Available Date: 15/08/2025



Elderwood Court, 250 Bury Street, Ruislip, HA4 7TL  
Approximate Gross Internal Area  
66 Sq M/710 Sq Ft



Please note that the location of doors, windows and other items are approximate and this floorplan is to be used for illustrative purposes only. Unauthorized reproduction is prohibited.

