



A six bedroom four reception room family home in a convenient location
Uxbridge Road, Pinner, HA5 4SL



Asking Price: £4,000 pcm

A six bedroom four reception room family home in a convenient location

Uxbridge Road, Pinner, HA5 4SL

• ENTRANCE HALL • CLOAK/SHOWER ROOM • THROUGH SITTING/DINING ROOM • KITCHEN/FAMILY ROOM • OFFICE • MAIN BEDROOM WITH ENSUITE SHOWER ROOM AND FITTED WARDROBES • FOUR FURTHER BEDROOMS WITH FITTED WARDROBES • FAMILY BATHROOM • SECLUDED REAR GARDEN • DRIVEWAY WITH OFF STREET PARKING • FURNISHED

Description

A well presented six bedroom, four bathroom detached family home with an impressive frontage with accommodation in excess of 2,600 sq ft. To the ground floor there is a rear aspect through living/dining room with two double doors to the rear garden and further double doors which lead into an office/study and a cloak/shower room. Also leading off the entrance hallway is a family/breakfast room, which then flows into an open-plan modern kitchen which has ample storage units. To the first floor there are six spacious which all benefit from fitted wardrobes with the main bedroom further benefiting from an en-suite shower room. A secluded rear garden and off street parking via the driveway.

**** The equivalent of one weeks rent is required to secure this property ****

Location

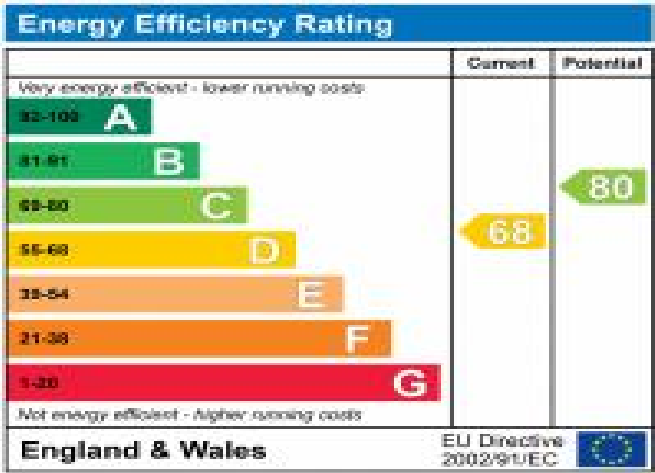
Situated on a popular road with easy access to local schools, Hatch End and Pinner can be found both equally close by offering a variety of boutique shops, restaurants, coffee houses and popular supermarkets. Transport facilities include local bus links and the Metropolitan Line at Pinner tube station with the Overground at Hatch End rail station; both lines provide a fast and frequent service into the heart of Central London and beyond. The area is well served for primary and secondary schooling, children's parks/playgrounds and recreational facilities.



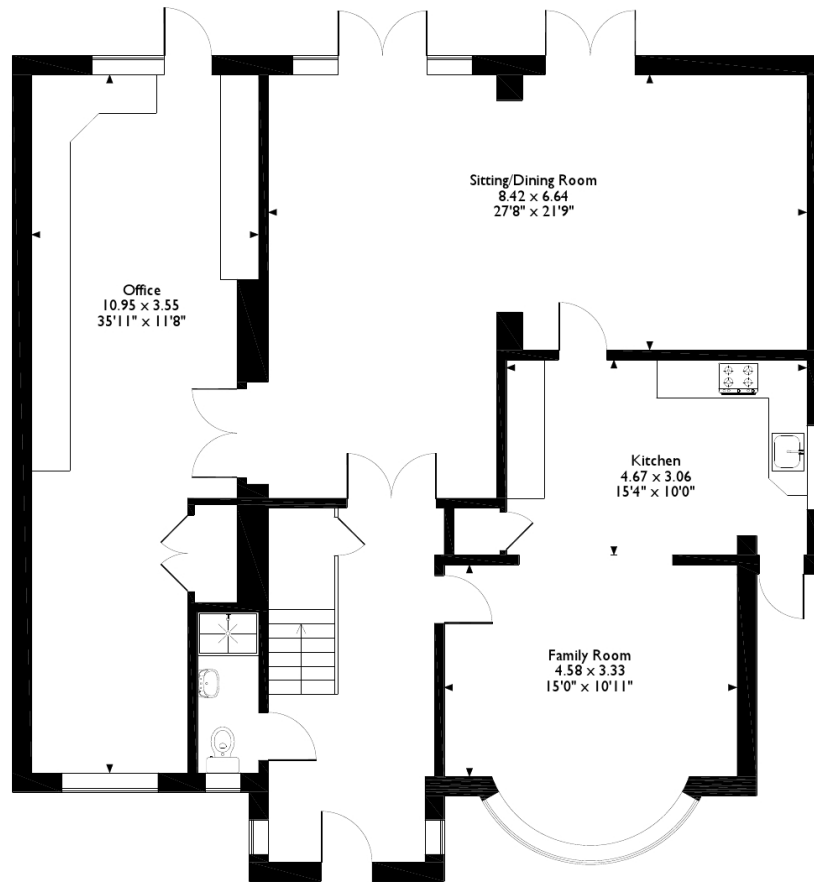


Additional Information

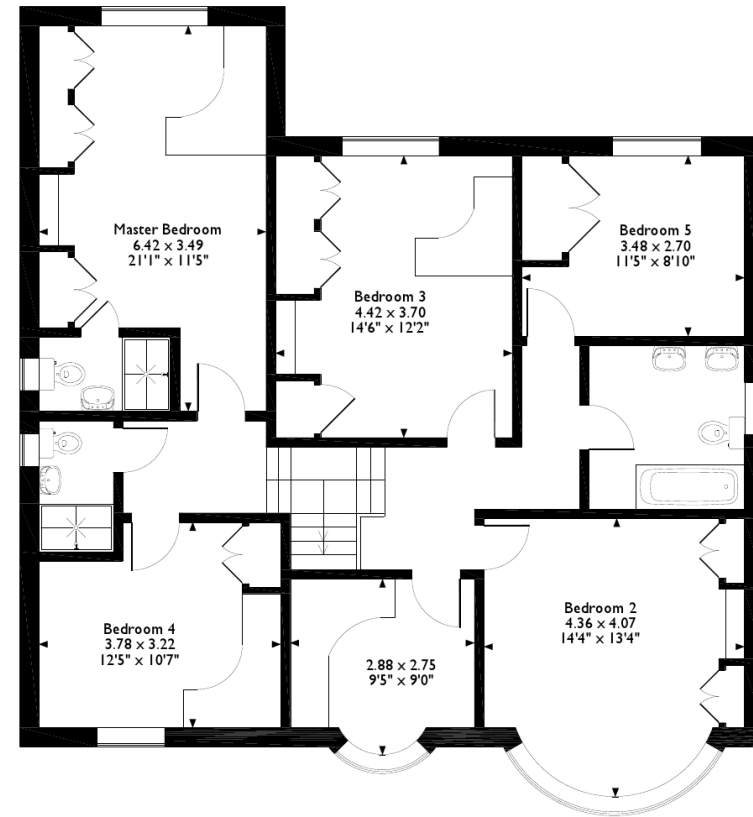
- Local Authority: Harrow
- Council Tax Band: G
- Deposit Amount: £5,769.00
- Reservation Payment: One weeks rent
- Energy Efficiency Rating: Band D
- Available Date: 03/10/2023



Uxbridge Road, Pinner
Approximate Gross Internal Area
244 Sq M/2627 Sq Ft



Ground Floor



First Floor

Please note that the location of doors, windows and other items are approximate and this floorplan is to be used for illustrative purposes only. Unauthorized reproduction is prohibited.



REGISTERED OFFICE 2-4 PACKHORSE ROAD, GERRARDS CROSS, BUCKINGHAMSHIRE, ENGLAND, SL9 7QE. COMPANY NO. 07557114. VAT NO. GB211239453