



A new luxury two bedroom two bathroom apartment close to the town centre
Sandy Lodge Way, Northwood, HA6 2AH



Asking Price: £2,750 pcm

A new luxury two bedroom two bathroom apartment close to the town centre

Sandy Lodge Way, Northwood, HA6 2AH

• LIVING/DINING/KITCHEN • UTILITY ROOM • CLOAKROOM • MAIN BEDROOM WITH ENSUITE BATHROOM • BEDROOM TWO WITH ENSUITE SHOWER ROOM • PRIVATE PATIO AREA • ONE ALLOCATED PARKING SPACE • UNFURNISHED

Description

Robsons are delighted to bring to market this brand new luxury two-bedroom apartment situated in an exclusive private development. Located on one of Northwood's most popular roads, the ground floor comprises of entrance hallway, open plan fitted kitchen/living room with high end integrated appliances, bi-fold patio doors leading out to a private terrace overlooking the beautiful communal gardens. The principle and second bedrooms both features an ensuite bathrooms, floor to ceiling fitted wardrobes and individually controlled air conditioning units. Other features include a large utility room, a cloakroom, allocated parking, communal gardens, secure outside storage & underfloor heating with individual room control.

An advance payment of one weeks rent is required to secure this property

Location

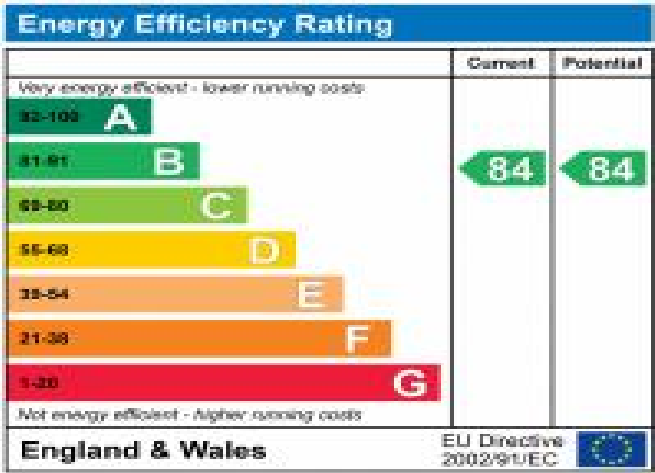
Northwood provides a range of shopping facilities including Waitrose supermarket, a variety of restaurants and other amenities with the Metropolitan Line station providing access to Baker Street and the City. There is a plethora of state and private schooling together with a wide choice of recreational facilities, which include golf courses and fitness centres. The M1, M40 and M25 motorways are also accessible.



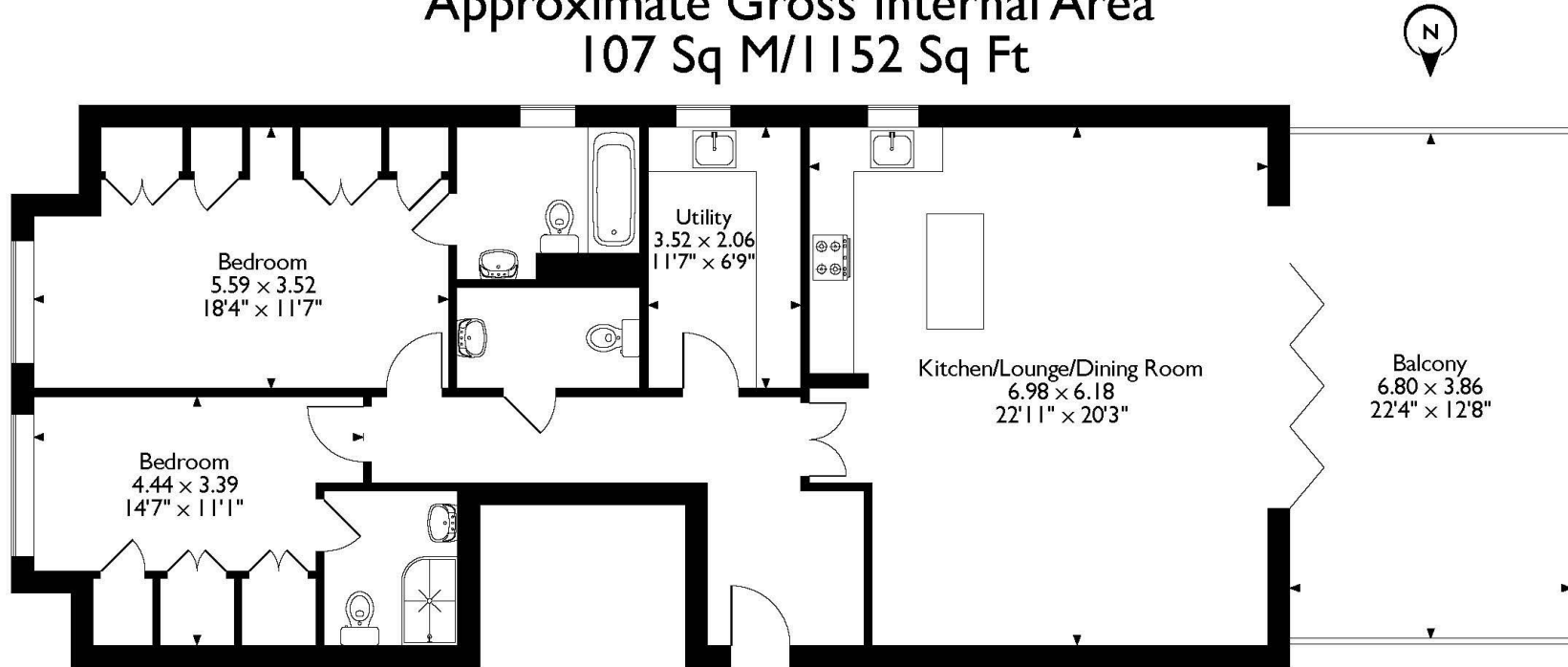


Additional Information

- Local Authority: Hillingdon
- Council Tax Band: B
- Deposit Amount: £3,173.00
- Reservation Payment: One weeks rent
- Energy Efficiency Rating: Band B
- Available Date: 12/09/2023



Sandy Lodge Way, Northwood
Approximate Gross Internal Area
107 Sq M/1152 Sq Ft



Ground Floor

Please note that the location of doors, windows and other items are approximate and this floorplan is to be used for illustrative purposes only. Unauthorized reproduction is prohibited.



REGISTERED OFFICE 2-4 PACKHORSE ROAD, GERRARDS CROSS, BUCKINGHAMSHIRE, ENGLAND, SL9 7QE. COMPANY NO. 07557114. VAT NO. GB211239453