



A new three bedroom stylish family home in a sought after location
The Circuits, Pinner, Middlesex HA5 2BD



Asking Price: £4,100 pcm

A new three bedroom stylish family home in a sought after location

The Circuits, Pinner, Middlesex HA5 2BD

• SPACIOUS ENTRANCE HALL • KITCHEN/DINING/LIVING ROOM • GROUND FLOOR BEDROOM WITH ENSUITE SHOWER ROOM • UTILITY ROOM • GUEST CLOAKROOM • TWO DOUBLE BEDROOMS WITH EAVES STORAGE • FIVE PIECE BATHROOM • REAR GARDEN • HOME OFFICE • DRIVEWAY • UNFURNISHED

Description

A brand-new three bedroom, two bathroom, elegant family home offering stylish and modern interiors. To the ground floor is a modern guest WC, a ground floor double bedroom complete with an en-suite shower room, an impressive kitchen/dining/living room with bi-folding doors to the garden and a utility room. The kitchen has modern units with high-specification integrated appliances. To the first floor are two large double bedrooms with access to eaves storage space and a luxury bathroom. Externally, the property offers a private rear garden with an outbuilding perfect for a home office or studio. To the front there is a driveway providing off-street parking.

**** An advance reservation payment of one weeks rent is required to secure the property ****

Location

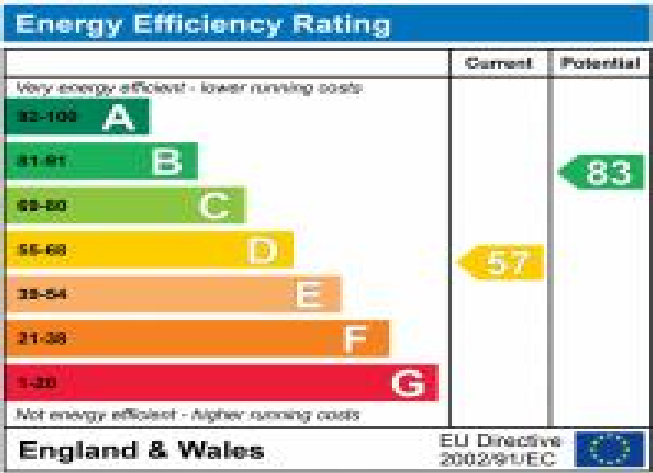
Situated off Cuckoo Hill, this property enjoys a peaceful yet convenient location, being within easy reach of Pinner, Northwood Hills and Eastcote which all provide a variety of shopping facilities, coffee houses, restaurants and popular supermarkets. For commuters, there are excellent transport links in the area with the Metropolitan Line available at Pinner and Northwood Hills stations, with Eastcote station offering both the Metropolitan and Piccadilly Line. The area is well served by local primary and secondary schooling, children's play areas and recreational facilities.



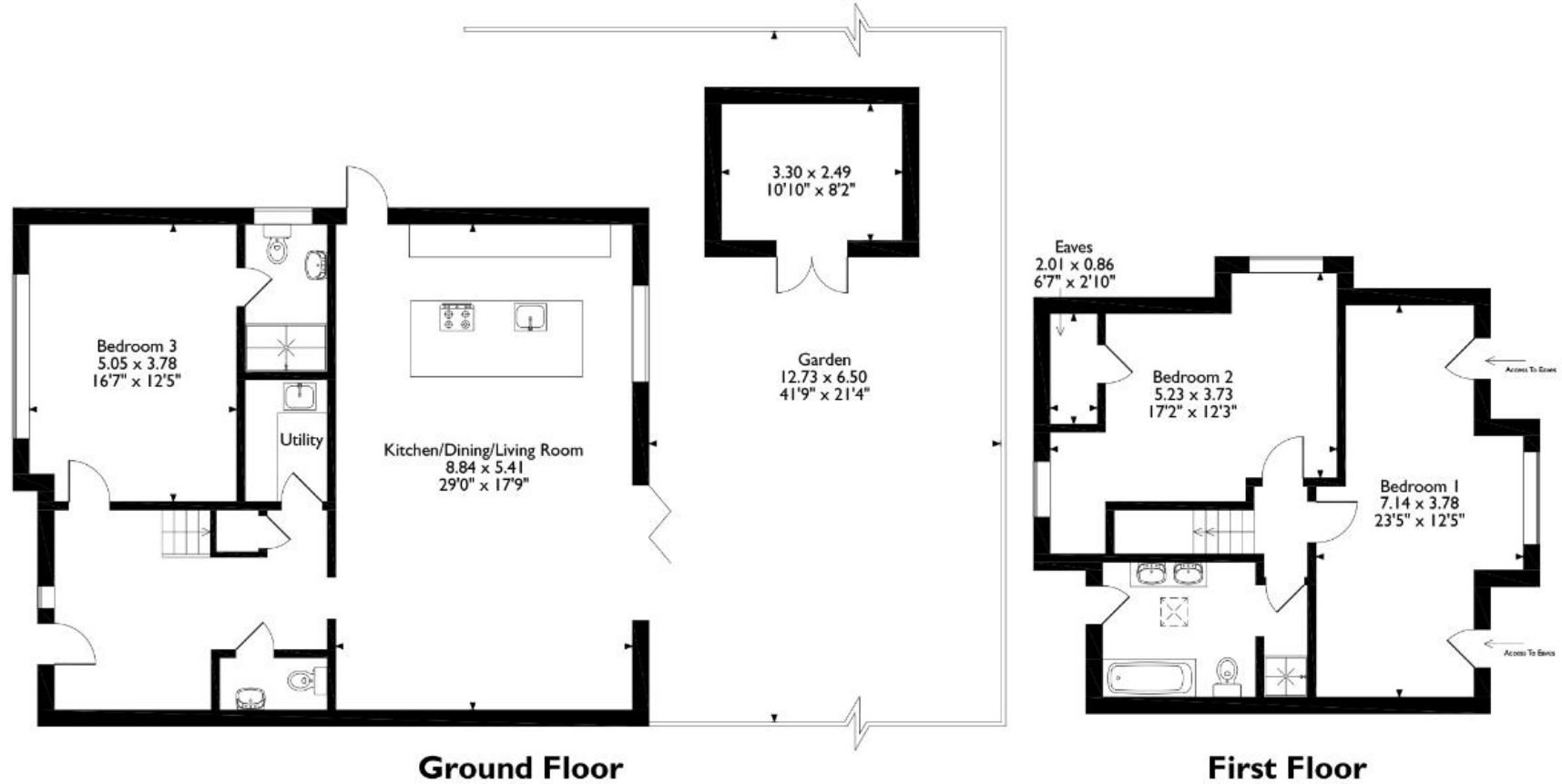


Additional Information

- Local Authority: Harrow
- Council Tax Band: G
- Deposit Amount: £4,730.00
- Reservation Payment: One weeks rent
- Energy Efficiency Rating: Band D
- Available Date: 31/03/2025



The Circuits, Pinner
 Approximate Gross Internal Area
 Main House = 149 Sq M/1606 Sq Ft
 Outbuilding = 8 Sq M/88 Sq Ft
 Total = 157 M/1694 Sq Ft



Please note that the location of doors, windows and other items are approximate and this floorplan is to be used for illustrative purposes only. Unauthorized reproduction is prohibited.



REGISTERED OFFICE 2-4 PACKHORSE ROAD, GERRARDS CROSS, BUCKINGHAMSHIRE, ENGLAND, SL9 7QE. COMPANY NO. 07557114. VAT NO. GB211239453