



A luxury two bedroom, two bathroom apartment close to the town centre  
Sandy Lodge Way, Northwood, HA6 2AH

**ROBSONS**



**Asking Price: £2,750 pcm**

## **A luxury two bedroom, two bathroom apartment close to the town centre**

Sandy Lodge Way, Northwood, HA6 2AH

---

• LIVING/DINING/KITCHEN • UTILITY ROOM • CLOAKROOM • MAIN BEDROOM WITH ENSUITE BATHROOM • BEDROOM TWO WITH ENSUITE SHOWER ROOM • PRIVATE PATIO AREA • ONE ALLOCATED PARKING SPACE • UNFURNISHED

---

### **Description**

Robsons are delighted to bring to market this new luxury two-bedroom apartment situated within an exclusive private development. Located on one of Northwood's most popular roads. The ground floor comprises of entrance hall, open plan kitchen/living room with high end integrated appliances, ample kitchen storage and bi-fold patio doors leading out to a private terrace, overlooking the beautiful communal gardens. The principle and second bedrooms both with ensuite bathrooms, fitted wardrobes and individually controlled air conditioning units. Other features include a large utility room, a guest cloakroom, allocated parking, communal gardens, secure outside storage & underfloor heating with individual room control.

**\*\*An advance payment of one weeks rent is required to secure this property\*\***

### **Location**

Northwood provides a range of shopping facilities including Waitrose supermarket, a variety of restaurants and other amenities with the Metropolitan Line station providing access to Baker Street and the City. There is a plethora of state and private schooling together with a wide choice of recreational facilities, which include golf courses and fitness centres. The M1, M40 and M25 motorways are also accessible.

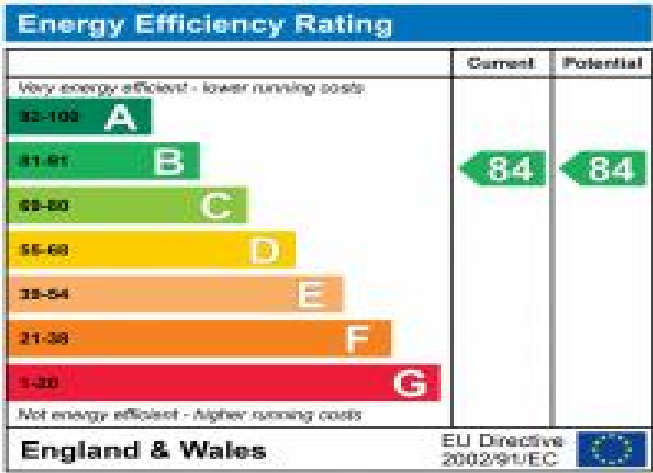






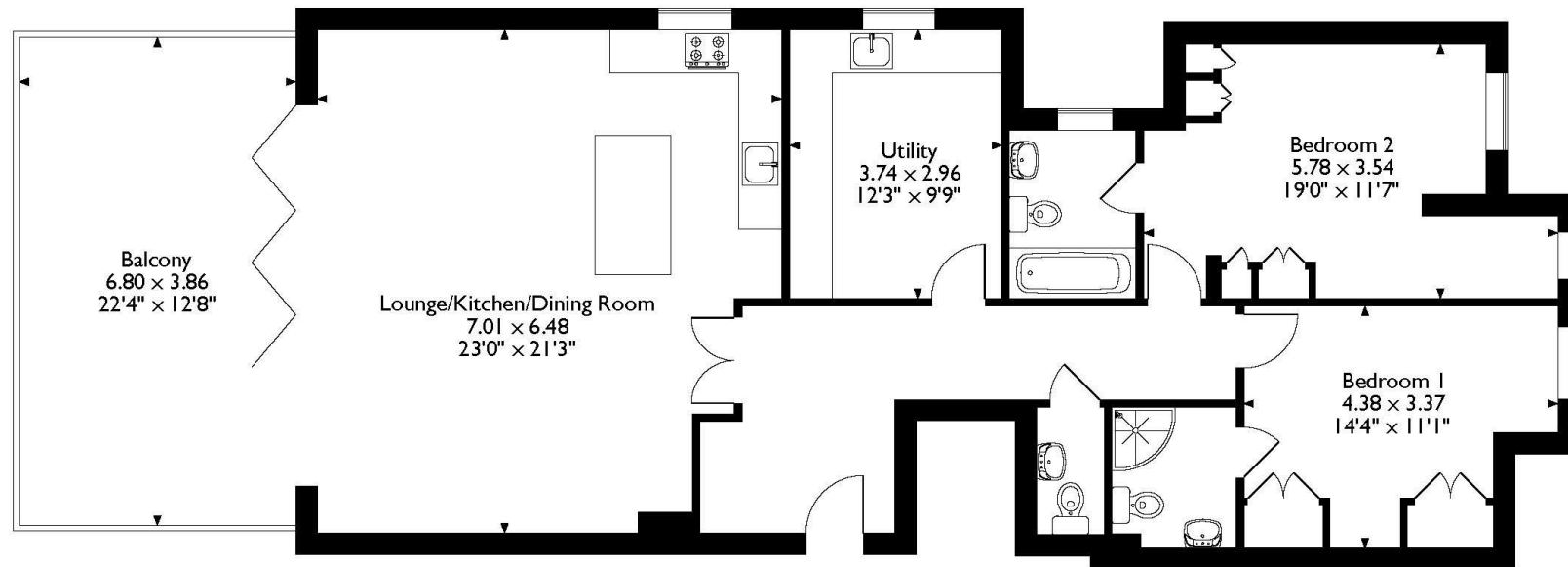
### Additional Information

- Local Authority: Hillingdon
- Council Tax Band: B
- Deposit Amount: £3,173.00
- Reservation Payment: One weeks rent
- Energy Efficiency Rating: Band B
- Available Date: 12/09/2023



# Sandy Lodge Way, Northwood

## Approximate Gross Internal Area 110 Sq M/1184 Sq Ft



**Ground Floor**

Please note that the location of doors, windows and other items are approximate and this floorplan is to be used for illustrative purposes only. Unauthorized reproduction is prohibited.

