



A superb first-floor studio flat in Ruislip with views overlooking Ruislip Lido.
Abercorn Grove, Ruislip, Middlesex HA4 7YP

ROBSONS

Asking Price: £1,000 pcm

A superb first-floor studio flat in Ruislip with views overlooking Ruislip Lido.

Abercorn Grove, Ruislip, Middlesex HA4 7YP

- FIRST FLOOR STUDIO FLAT • CONVENIENTLY LOCATED •
- KITCHEN OPEN PLAN TO LIVING ROOM • ONE BEDROOM •
- PRIVATE BATHROOM • ALLOCATED PARKING BAY • FURNISHED OR UNFURNISHED

Description

A first-floor studio flat in Ruislip, with views overlooking Ruislip Lido. Situated just a stone's throw away from local amenities and excellent transport links, this property offers a comfortable and convenient lifestyle. The studio is tastefully designed, boasting a fitted kitchenette and a private bathroom, ensuring your utmost comfort and privacy. The property is offered furnished or unfurnished with allocated parking bay.

**** A holding deposit of £230 is required to secure this property, this is equivalent to one weeks rent****

Location

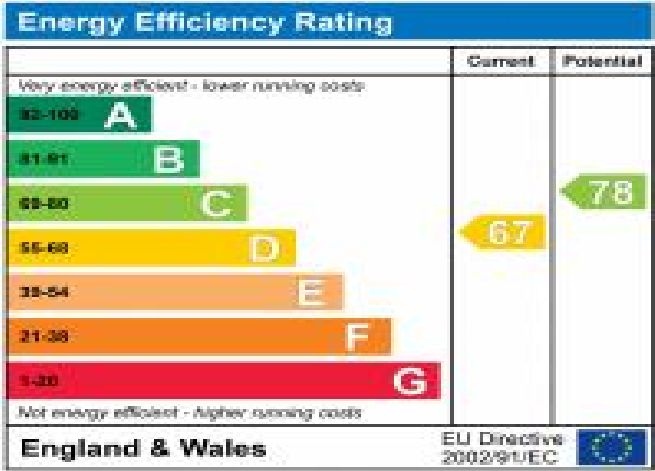
The property is moments from Ruislip Lido and ideally located within easy reach of Ruislip town centre with its range of shops, cafes, restaurants and bars. Along with Ruislip train station with its Metropolitan, Piccadilly and Central Lines and local bus routes including the H13 service which runs from 6am til midnight with Ruislip Station being only six minutes away. Transport links with the A40/Western Avenue close by providing swift access into Central London.





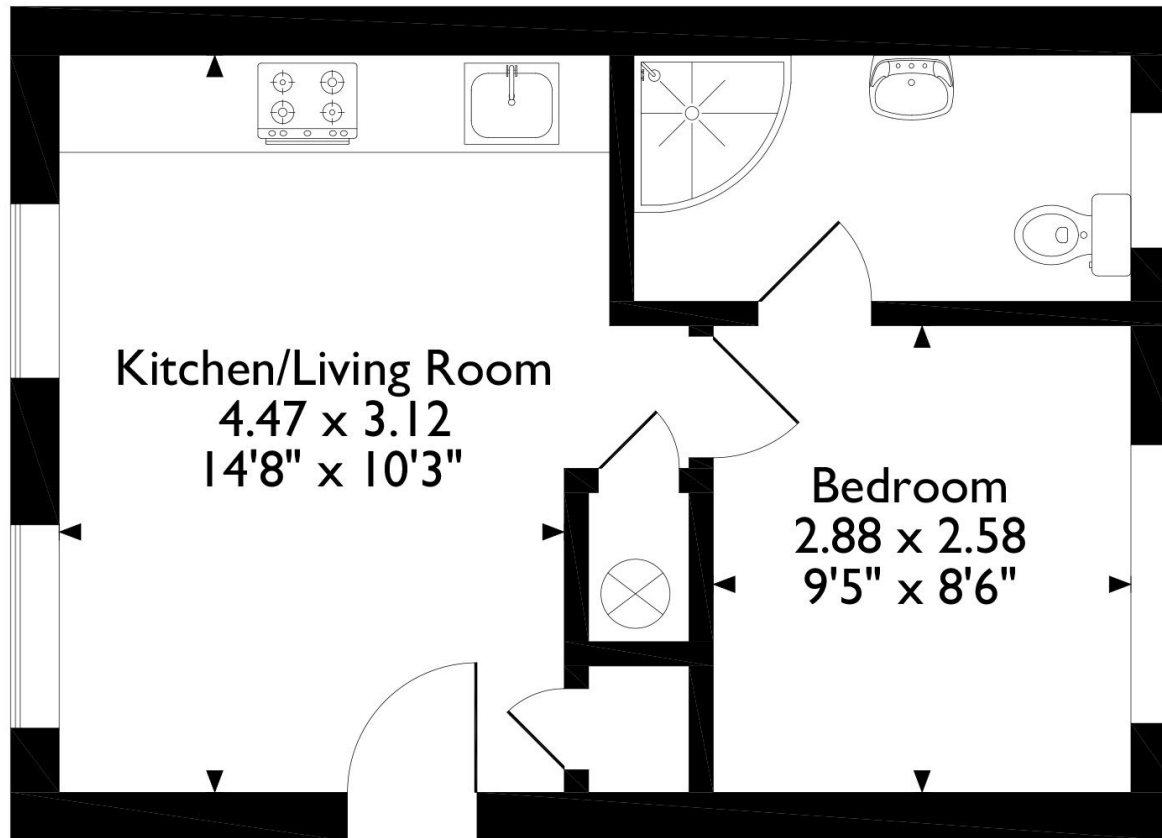
Additional Information

- Local Authority: Hillingdon
- Council Tax Band: B
- Deposit Amount: £1,153.00
- Reservation Payment: One weeks rent
- Energy Efficiency Rating: Band D
- Available Date: 31/08/2023



Abercorn Grove, Ruislip

Approximate Gross Internal Area 30 Sq M/323 Sq Ft



Please note that the location of doors, windows and other items are approximate and this floorplan is to be used for illustrative purposes only. Unauthorized reproduction is prohibited.

