



TWO/THREE BEDROOM END-OF-TERRACE HOUSE

Addison Way, Northwood, Middlesex

ROBSONS

TWO/THREE BEDROOM END-OF-TERRACE HOUSE

Addison Way, Northwood, Middlesex

MODERN AND STYLISH • TWO/THREE BEDROOMS • MODERN FAMILY BATHROOM • OPEN-PLAN LIVING • MAIN BEDROOM WITH DRESSING ROOM • OUT-HOUSE • DRIVEWAY FOR SEVERAL CARS • SPACIOUS REAR GARDEN • PLENTY OF LIGHT THROUGHOUT • GREAT CONDITION •

Description

A rarely available modern 2-3 bed end-of-terrace property. The property has been skilfully extended to allow an open-plan living style on the ground floor. To the first floor, 2 large double bedrooms, the principle bedroom with a dressing room. Potential to re-establish the 3rd bedroom if required. Other benefits include a fully functioning out-house, driveway for several cars and separate w/c.





Location

Northwood provides a range of shopping facilities, supermarket, restaurants and the Metropolitan Line Station providing access to Baker Street and the city beyond. The area has a range of both private and state schools. Places of worship and recreational facilities are also well catered for in the surrounding area and motorway links to M25 and M1 are nearby.

Additional Information

Guide Price: £675,000

Tenure: Freehold

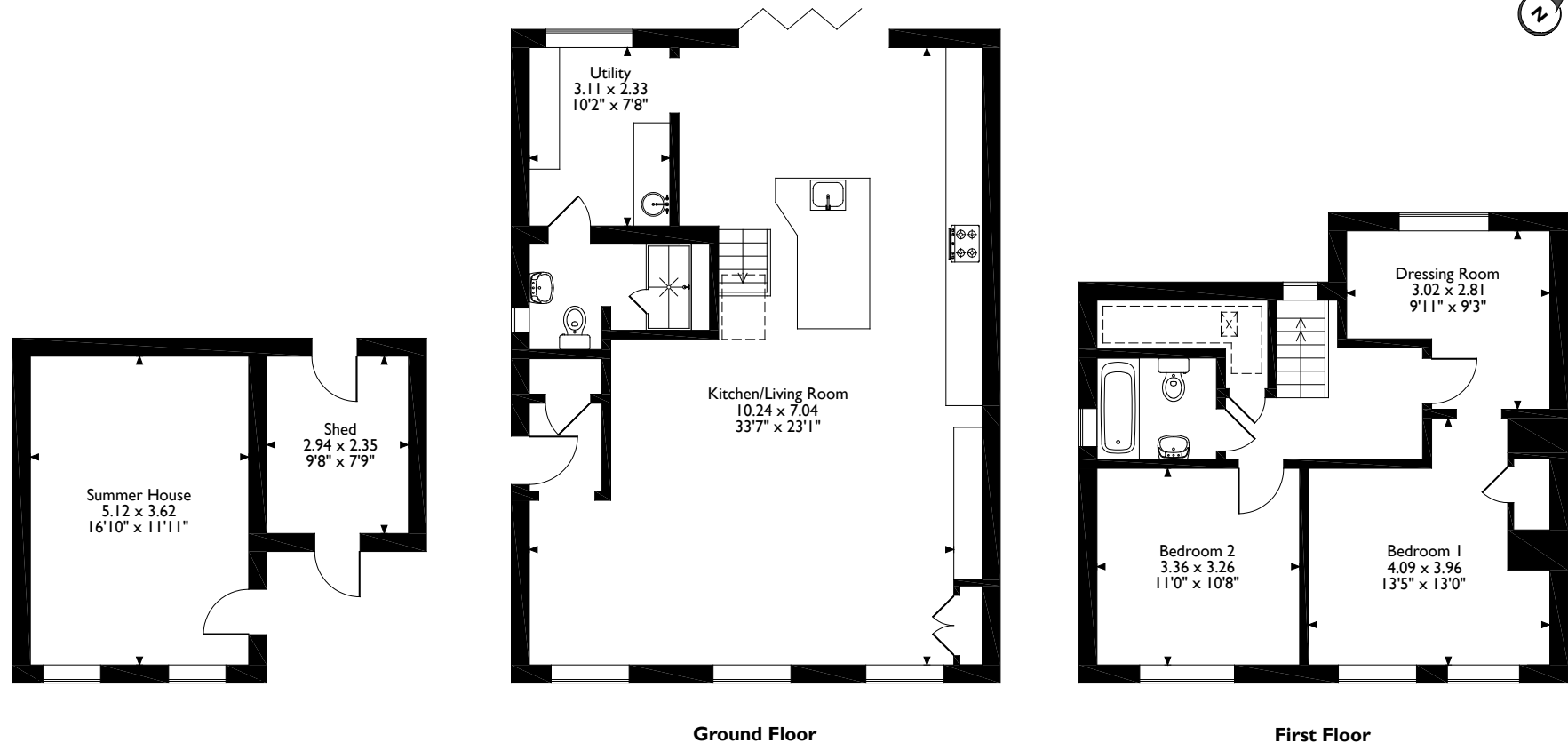
Local Authority: London Borough of Hillingdon

Council Tax: Band E

Energy Efficiency Rating: Band D



Addison Way, Northwood
 Approximate Gross Internal Area
 Main House = 126 Sq M/1356 Sq Ft
 Outbuilding = 26 Sq M/280 Sq Ft
 Total = 152 Sq M/1636 Sq Ft



Please note that the location of doors, windows and other items are approximate and this floorplan is to be used for illustrative purposes only. Unauthorized reproduction is prohibited.



Address 7 Clive Parade, Northwood, Middlesex, HA6 2QF
 Tel: 01923 835355 northwood@robsonswb.com
www.robsonswb.com

