



A spacious ground floor maisonette with private garden
Mildred Avenue, Watford, WD18 7DU

ROBSONS

Asking Price: £1,700 pcm

A spacious ground floor maisonette with private garden

Mildred Avenue, Watford, WD18 7DU

• ENTRANCE HALL • LIVING ROOM • KITCHEN WITH FITTED APPLIANCES • MODERN BATHROOM • TWO DOUBLE BEDROOMS - BEDROOM TWO HAS ACCESS TO THE GARDEN • PRIVATE GARDEN • FURNISHED OR UNFURNISHED

Description

A bright and spacious two bedroom maisonette located in the heart of Watford. The ground floor property consists, entrance hall, a large master bedroom with storage, a large second bedroom with direct access to the private garden, living room, kitchen with fitted appliances and a modern family bathroom with a useful utility room. On street permit parking is available directly outside the property.

**** An advance reservation payment of one weeks rent is required to secure the property ****

Location

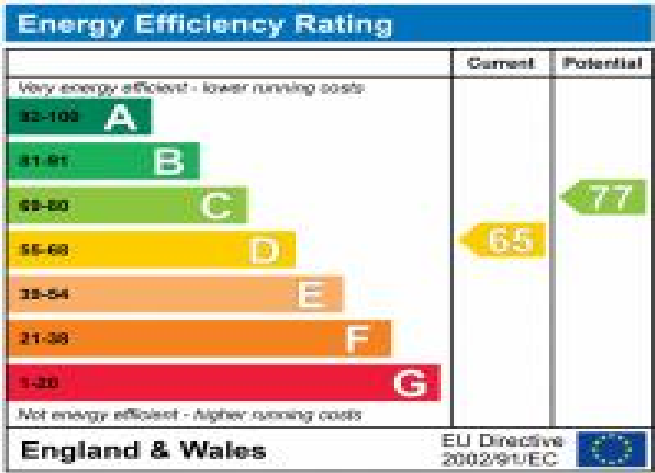
Watford town centre is close by providing an extensive choice of boutique shops, restaurants, coffee houses, supermarkets and the Intu shopping centre. Transport facilities include the Metropolitan Line and Main Line train stations offering a frequent service into central London and beyond. There is an excellent selection of schools both private and state including Watford Grammar School for Boys and Watford Grammar School for Girls.



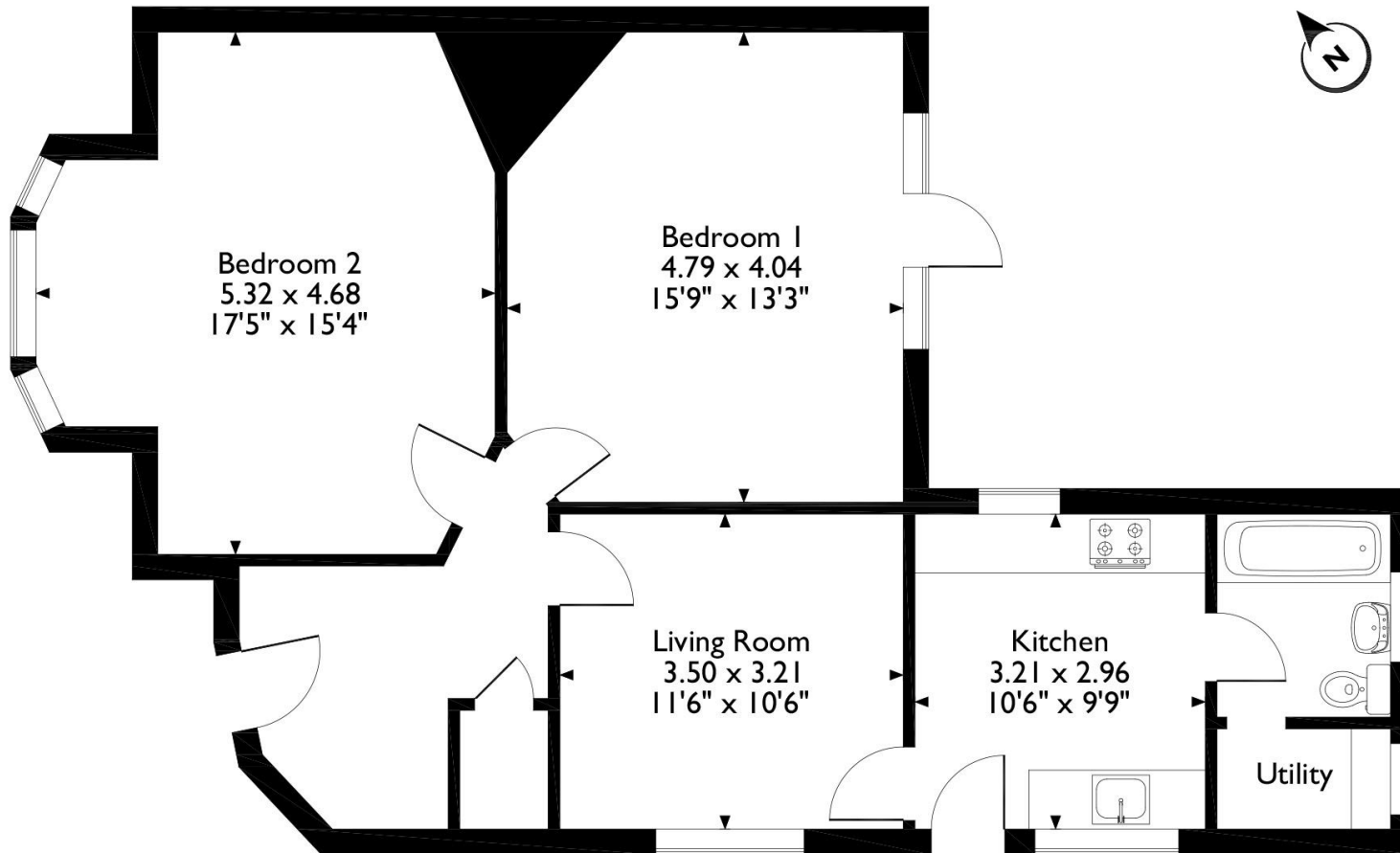


Additional Information

- Local Authority: Watford
- Council Tax Band: C
- Deposit Amount: £1,961.00
- Reservation Payment: One weeks rent
- Energy Efficiency Rating: Band D
- Available Date: 24/01/2024



Mildred Avenue, Watford, Hertfordshire, WD18 7DU
Approximate Gross Internal Area
78 Sq M/840 Sq Ft



Please note that the location of doors, windows and other items are approximate and this floorplan is to be used for illustrative purposes only. Unauthorized reproduction is prohibited.



REGISTERED OFFICE 2-4 PACKHORSE ROAD, GERRARDS CROSS, BUCKINGHAMSHIRE, ENGLAND, SL9 7QE. COMPANY NO. 07557114. VAT NO. GB211239453