



A CHARMING FIVE BEDROOM HOME IN THE HEART OF PINNER WITH NO CHAIN

Waxwell Close, Pinner, HA5 3ET

ROBSONS

A CHARMING FIVE BEDROOM HOME IN THE HEART OF PINNER WITH NO CHAIN

Waxwell Close, Pinner, HA5 3ET

**ENTRANCE HALLWAY • GUEST WC • TWO
RECEPTION ROOMS • MODERN KITCHEN • FIVE
BEDROOMS, ONE EN-SUITE • FAMILY
BATHROOM • WELL-MAINTAINED FRONT &
REAR GARDEN • GARAGE • NO ONWARD CHAIN**

Description

Enjoying a tranquil setting just moments from Pinner's local amenities, is this delightful five bedroom, two bathroom family home that is available to the market with no onward chain.

The ground floor comprises an entrance hallway with a guest WC, a front aspect dining room, and an open-plan kitchen / living room with the kitchen featuring modern units with an integrated oven, a kitchen island and access to the garden. The first floor hosts Three double bedrooms with one benefiting from fitted wardrobes, and a family bathroom. To the second floor there is the master bedroom offering character with an exposed brick feature wall, an en-suite and fitted wardrobes. There is also a further bedroom / home office.





Externally this charming home boasts a well-maintained rear garden that is part lawn and part patio, as well as front garden that is laid to lawn with manicured hedges. There is also the added benefit of a garage in a nearby block.

Location

Located moments from Pinner high street and a variety of boutique shops, restaurants, coffee houses and popular supermarkets. Transport facilities include local bus links and the Metropolitan Line at nearby Pinner station which provides a fast and frequent service into the heart of Central London. The area is well served for primary and secondary schooling, children's parks/playgrounds and recreational facilities.

Additional Information

Guide Price: Price on Application

Tenure: Freehold

Local Authority: London Borough of Harrow

Council Tax: Band E

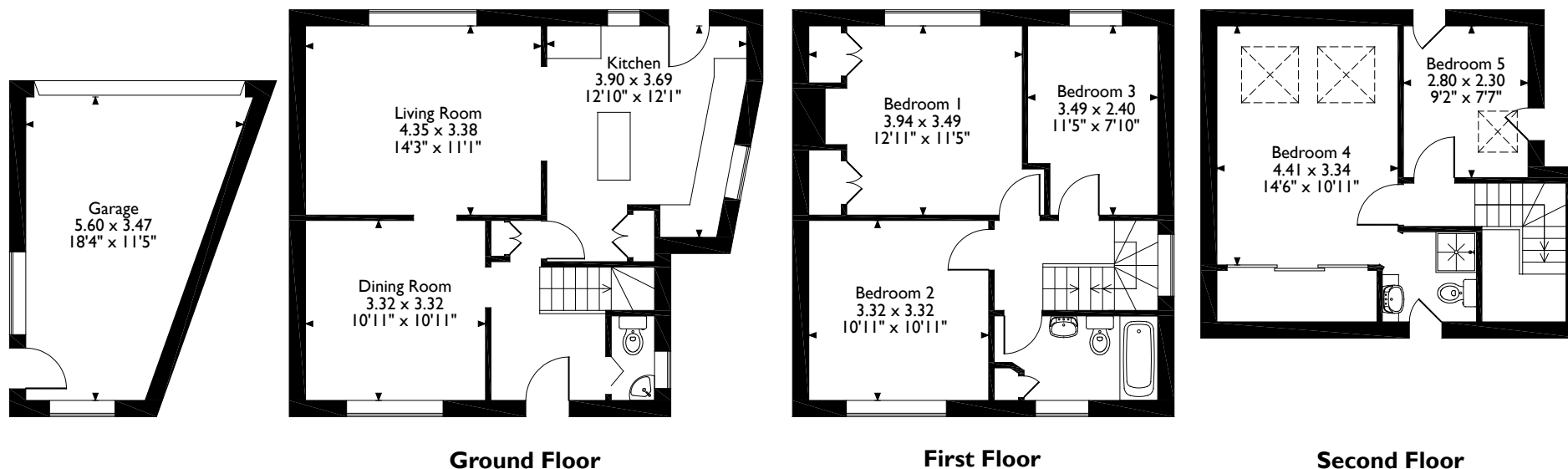
Energy Efficiency Rating: Band E



Waxwell Close, Pinner

Approximate Gross Internal Area

Main House = 129 Sq M/1388 Sq Ft
 Garage = 18 Sq M/194 Sq Ft
 Total = 147 Sq M/1582 Sq Ft



Please note that the location of doors, windows and other items are approximate and this floorplan is to be used for illustrative purposes only. Unauthorized reproduction is prohibited.

ROBSONS

1 High Street, Pinner, Middlesex, HA5 5PJ
 Tel: 0208 866 8083 Pinner@robsonswb.com

www.robsonswb.com

[www.
the
londonoffice.co.uk](http://www.the-londonoffice.co.uk)
 40 ST JAMES'S PLACE SW1

Important notice: Robsons, their clients and any joint agents give notice that 1: They are not authorised to make or give any representations or warranties in relation to the property either here or elsewhere, either on their own behalf or on behalf of their client or otherwise. They assume no responsibility for any statement that may be made in these particulars. These particulars do not form part of any offer or contract and must not be relied upon as statements or representations of fact. 2: Any areas, measurements or distances are approximate. Plot sizes and dimensions are taken from Promap and are approximate. The text, photographs and plans are for guidance only and are not necessarily comprehensive. It should not be assumed that the property has all necessary planning, building regulation or other consents and Robsons have not tested any services, equipment or facilities. Purchasers must satisfy themselves by inspection or otherwise.