



A beautifully presented three bedroom, two bathroom top floor apartment
Chorleywood House Drive, Chorleywood, WD3 5FL



Asking Price: £2,500 pcm

A beautifully presented three bedroom, two bathroom top floor apartment

Chorleywood House Drive, Chorleywood, WD3 5FL

- TOP FLOOR APARTMENT OVERLOOKING CHORLEYWOOD HOUSE ESTATE • ACCESS VIA VIDEO INTERCOM • ENTRANCE HALLWAY • FITTED KITCHEN • LOUNGE/DINING ROOM • MASTER BEDROOM WITH ENSUITE • TWO ADDITIONAL BEDROOMS • BEAUTIFUL LANDSCAPED COMMUNAL GARDENS • ALLOCATED PARKING • UNFURNISHED

Description

A beautifully presented three bedroom, two bathroom top floor apartment full of character in the stunning rarely available Chorleywood House. The property comprises of entrance hallway, master bedroom with ensuite shower room and fitted wardrobes, family bathroom, bedroom two and a spacious lounge/dining room with large bay windows, fitted kitchen and bedroom three. The property is offered unfurnished with allocated parking and stunning landscaped gardens.

Location

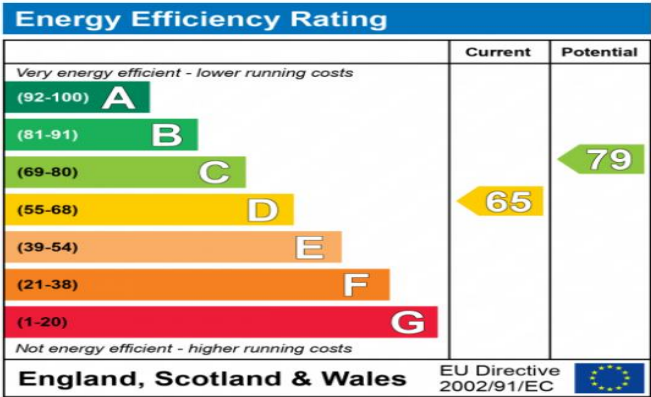
Chorleywood Village provides a wide choice of boutique shops, coffee houses and restaurants. Marks & Spencer and Waitrose food halls are available in Rickmansworth. The area is also well served for sought after state and private schools for all ages. St Clement Danes School is within short walking distance. Leisure facilities include golf courses, cricket, football clubs, horse riding and fitness centres, together with Chorleywood Common and Rickmansworth Aquadrome, providing acres of outdoor space for walks and further activities. The Metropolitan and Main lines at Chorleywood Station offer a frequent service into London and beyond. The M25 is easily accessible via Junctions 17 and 18.





Additional Information

- Local Authority: Three Rivers
- Council Tax Band: G
- Energy Efficiency Rating: Band D
- Available Date: 03/02/2023

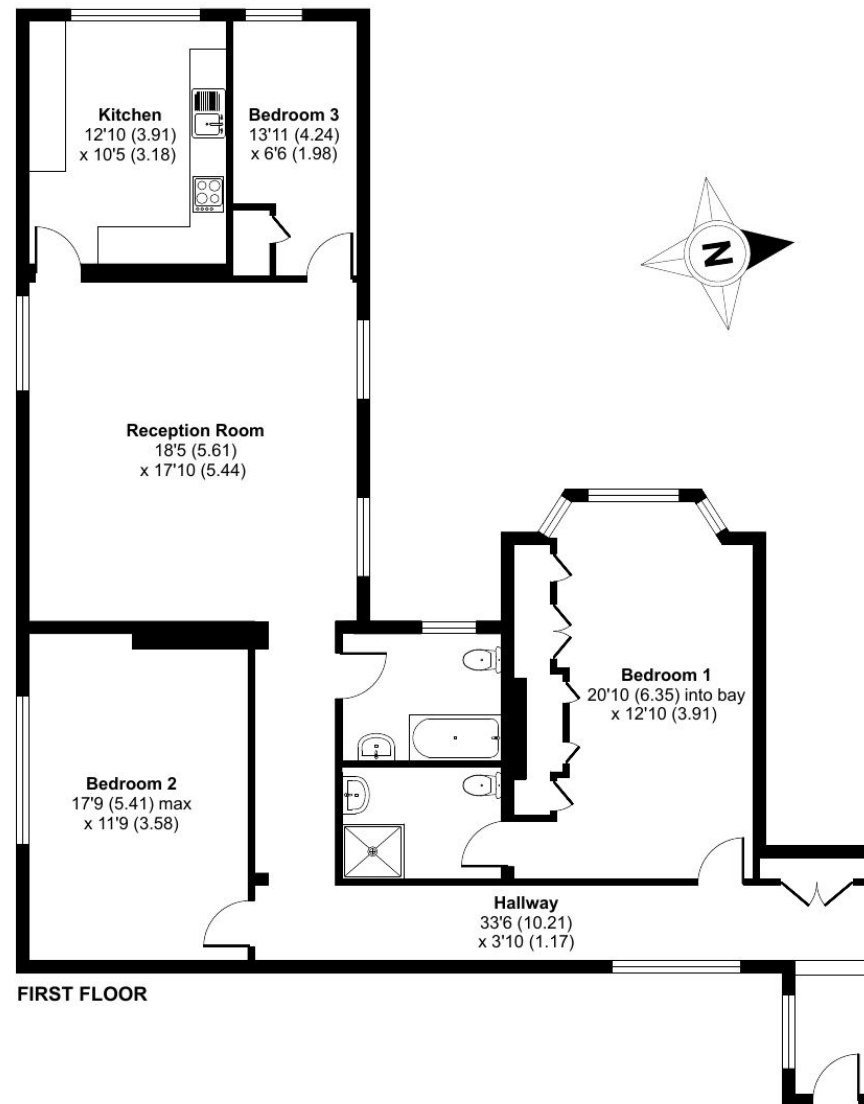


The energy efficiency rating is a measure of the overall efficiency of a home. The higher the rating the more energy efficient the home is and the lower the fuel bills will be.



Approximate Area = 1497 sq ft / 139 sq m

For identification only - Not to scale



FIRST FLOOR



Floor plan produced in accordance with RICS Property Measurement Standards incorporating International Property Measurement Standards (IPMS2 Residential). © nichecom 2023. Produced for Robsons. REF: 942654



Middlesex | Hertfordshire | Buckinghamshire



REGISTERED OFFICE 2-4 PACKHORSE ROAD, GERRARDS CROSS, BUCKINGHAMSHIRE, ENGLAND, SL9 7QE. COMPANY NO. 07557114. VAT NO. GB211239453