



A BRAND NEW THREE BEDROOM, TWO BATHROOM SEMI-DETACHED HOUSE  
Hare Crescent, Watford, Hertfordshire WD25 7EE

**ROBSONS**



**Asking Price: £2,500 pcm**

## **A BRAND NEW THREE BEDROOM, TWO BATHROOM SEMI-DETACHED HOUSE**

Hare Crescent, Watford, Hertfordshire WD25 7EE

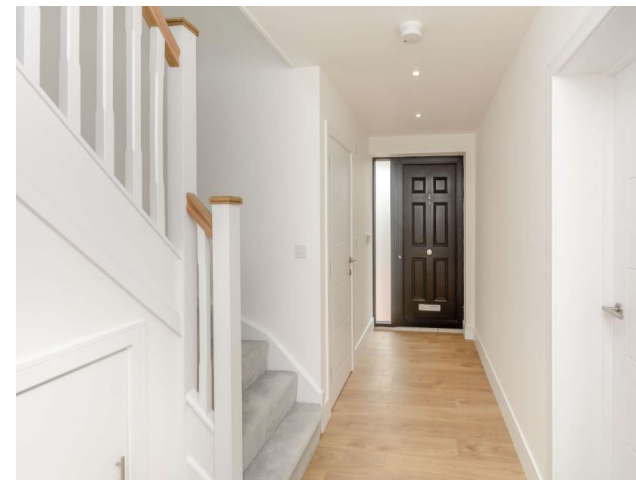
- 
- BRAND NEW • THREE BEDROOMS • TWO BATHROOMS •
  - LIGHT AND SPACIOUS • LOFT SPACE • DRIVEWAY PARKING •
  - REAR GARDEN WITH SIDE ACCESS • UNFURNISHED
- 

### **Description**

An excellent opportunity to rent a brand new three bedroom, two bathroom semi-detached house which offers a spacious, high spec interior, and a great location in the sought-after area of Leavesden. Features include a wonderful kitchen / dining room / lounge with an extensive range of built-in appliances, a further separate reception room, a downstairs guest cloakroom, three double bedrooms, two bathrooms (one en-suite), and a huge loft space with a skylight window. There is a driveway to the front providing off-street parking for several cars, and a sunny west-facing rear garden with side access to the front.\* Loft space only suitable for storage.

### **Location**

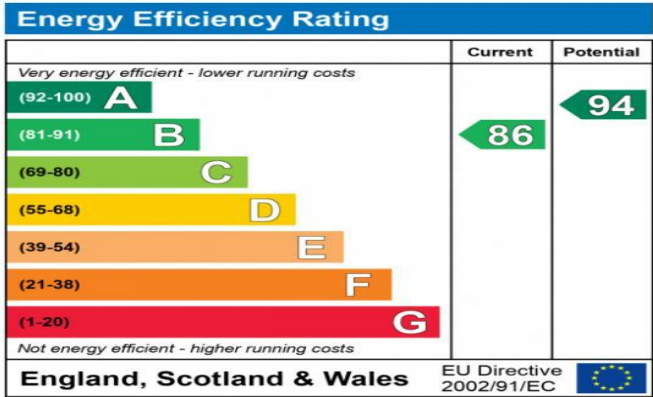
Hare Crescent is a turning off High Road Leavesden, which is conveniently situated for easy access to Parmiters School, local shopping facilities, Leavesden County Park, and Woodside Leisure Centre.





### Additional Information

- Local Authority: Hertfordshire County Council
- Council Tax: Band E
- Energy Efficiency Rating: Band B
- Available Date: 04/11/2022

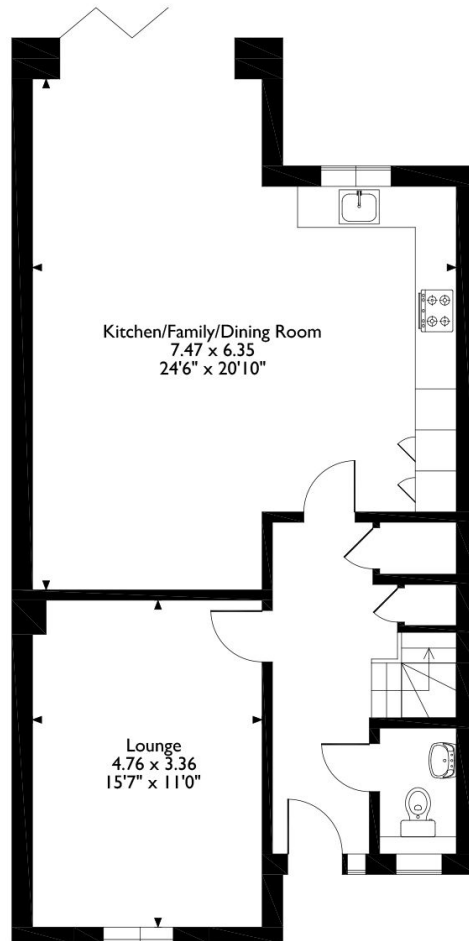


The energy efficiency rating is a measure of the overall efficiency of a home. The higher the rating the more energy efficient the home is and the lower the fuel bills will be.

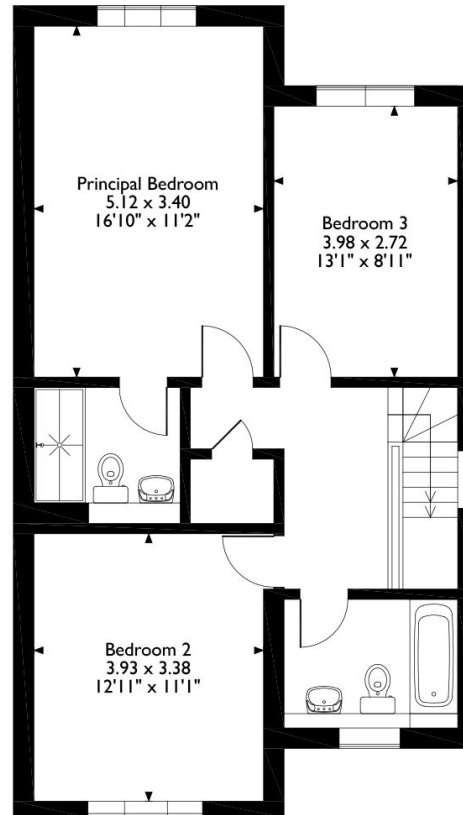


# Hare Crescent, Watford, Hertfordshire

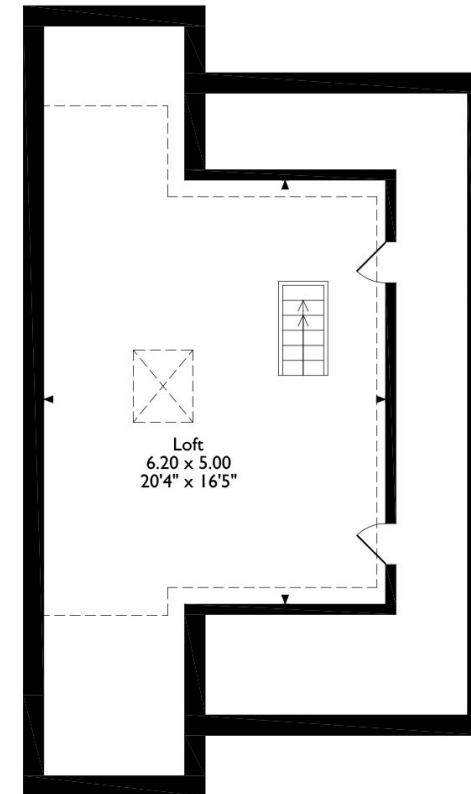
## Approximate Gross Internal Area 164 Sq M / 1766 Sq Ft



**Ground Floor**



**First Floor**



**Second Floor**

Please note that the location of doors, windows and other items are approximate and this floorplan is to be used for illustrative purposes only. Unauthorized reproduction is prohibited.



REGISTERED OFFICE 2-4 PACKHORSE ROAD, GERRARDS CROSS, BUCKINGHAMSHIRE, ENGLAND, SL9 7QE. COMPANY NO. 07557114. VAT NO. GB211239453