



A very well presented one bedroom ground floor maisonette  
St Catherines Farm Court, Ruislip, HA4 7YH



**Asking Price: £1,100 pcm**

## **A very well presented one bedroom ground floor maisonette**

St Catherines Farm Court, Ruislip, HA4 7YH

---

• GROUND FLOOR • FITTED KITCHEN • UTILITY • RECEPTION ROOM • BEDROOM ONE • BATHROOM • GAS CENTRAL HEATING • DOUBLE GLAZING • ALLOCATED PARKING • UNFURNISHED

---

### **Description**

A very well presented one bedroom ground floor maisonette offered in good condition throughout. The property in a quiet residential area and comprises of fitted kitchen, reception room, utility room, bathroom and allocated parking.

### **Location**

St Catherines Farm Court is ideally located and within walking distance to Ruislip Lido. Ruislip town centre is a short distance away with its range of shops, cafes, restaurants and bars. Along with Ruislip train station with its Metropolitan, Piccadilly and Central Lines and local bus routes. Transport links with the A40/Western Avenue close by providing swift access into Central London.

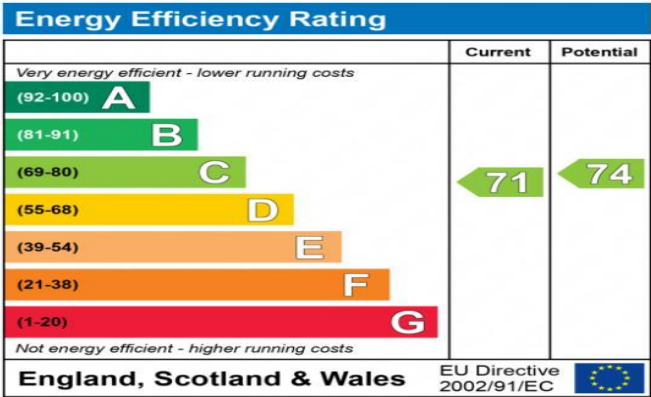






### Additional Information

- Local Authority: Hillingdon
- Council Tax Band: C
- Energy Efficiency Rating: Band C
- Available Date: 24/02/2022

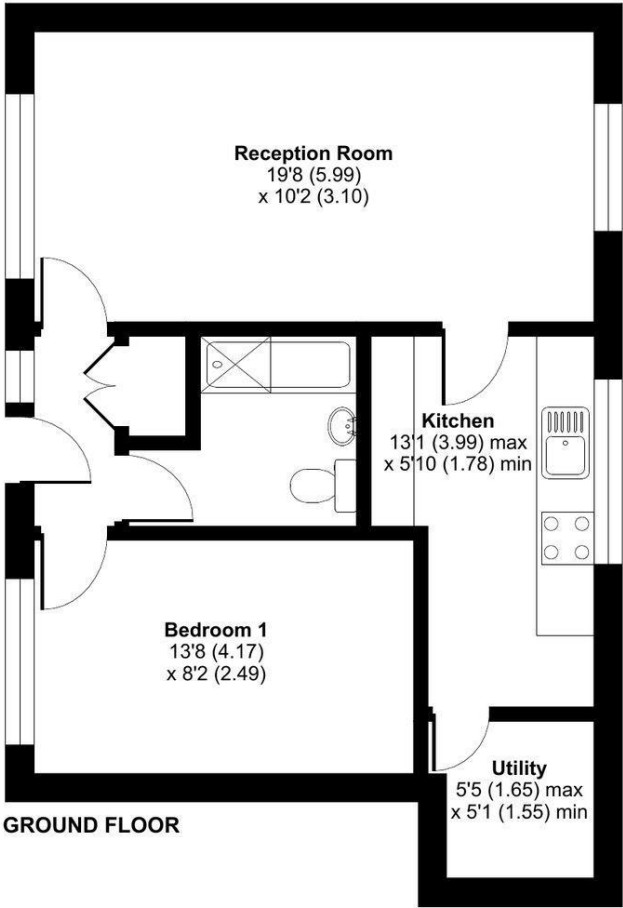


The energy efficiency rating is a measure of the overall efficiency of a home. The higher the rating the more energy efficient the home is and the lower the fuel bills will be.



St. Catherines Farm Court, Ruislip, HA4

Approximate Area = 530 sq ft / 49.2 sq m  
For identification only - Not to scale



Floor plan produced in accordance with RICS Property Measurement Standards incorporating International Property Measurement Standards (IPMS2 Residential). © nichecom 2022.  
Produced for Robsons Lettings. REF: 815389



REGISTERED OFFICE 2-4 PACKHORSE ROAD, GERRARDS CROSS, BUCKINGHAMSHIRE, ENGLAND, SL9 7QE. COMPANY NO. 07557114. VAT NO. GB211239453