



A stylish and modern five bedroom semi-detached family home.  
George V Avenue, Pinner, HA5 5SW





**Asking Price: £3,000 pcm**

## **A stylish and modern five bedroom semi-detached family home.**

George V Avenue, Pinner, HA5 5SW

---

• SEMI DETACHED • FIVE BEDROOMS • TWO BATHROOMS • TWO RECEPTION ROOMS • MODERN KITCHEN • DOWNSTAIRS W/C • GARDEN • GARAGE • DRIVEWAY • UNFURNISHED

---

### **Description**

A stylish and modern five bedroom semi-detached family home. This modern family home is set over three floors and comprises of a bright and welcoming entrance and hallway, a large front reception room, a spacious rear living room with patio doors leading to the well-manicured garden, a downstairs W/C and a fully fitted attractive modern kitchen with integrated appliances. On the first you will find two large double bedrooms with fitted wardrobes, a small double bedroom with fitted wardrobes and a family shower room. On the top floor are two further double bedrooms with fitted wardrobes and a modern shower room. The property also benefits from air-conditioning, a front driveway and a rear garage.

**\*\* The equivalent of one weeks rent is required to secure this property \*\***

### **Location**

North Harrow, Hatch End and Pinner offer a variety of shops, restaurants, coffee houses and popular supermarkets. Transport facilities include local bus links and the Metropolitan Line at North Harrow tube station and the Overground at Hatch End railway station, both providing a fast and frequent service into the heart of Central London and beyond. The area is well served for primary and secondary schooling, children's parks/playgrounds and recreational facilities.

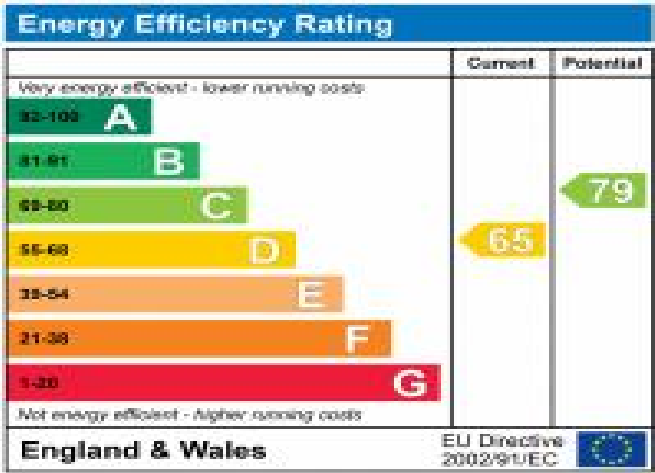






### Additional Information

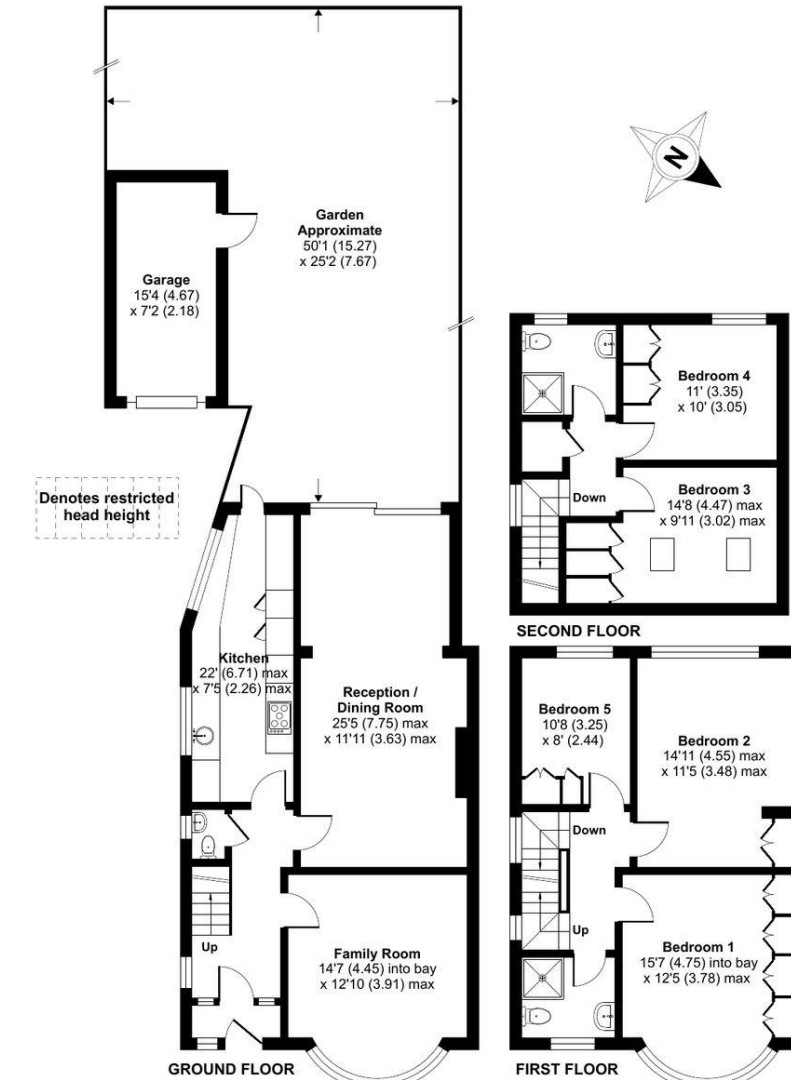
- Local Authority: Harrow
- Council Tax Band: E
- Deposit Amount: £3,461.00
- Reservation Payment: One weeks rent
- Energy Efficiency Rating: Band D
- Available Date: 10/10/2023



# George V Avenue, Pinner, HA5

Approximate Area = 1759 sq ft / 163.4 sq m (includes garage)

For identification only - Not to scale



Floor plan produced in accordance with RICS Property Measurement Standards incorporating International Property Measurement Standards (IPMS2 Residential). © nichecom 2022. Produced for Robsons Lettings. REF: 826009



REGISTERED OFFICE 2-4 PACKHORSE ROAD, GERRARDS CROSS, BUCKINGHAMSHIRE, ENGLAND, SL9 7QE. COMPANY NO. 07557114. VAT NO. GB211239453

**ROBSONS**