



A two bedroom, two bathroom apartment set in an exclusive development
Uxbridge Road, Pinner, HA5 3LW

ROBSONS

Asking Price: £1,950 pcm

A two bedroom, two bathroom apartment set in an exclusive development

Uxbridge Road, Pinner, HA5 3LW

• 2ND FLOOR APARTMENT • KITCHEN/ OPEN PLAN LIVING ROOM • MASTER BEDROOM WITH ENSUITE SHOWER ROOM • SECOND BEDROOM • TWO BATHROOMS • PRIVATE BALCONY • VIDEO ENTRY SYSTEM • FITTED WARDROBES • SECURE ALLOCATED PARKING • UNFURNISHED

Description

A two bedroom, two bathroom second floor apartment set within an exclusive development of 26 luxury apartments situated in a commanding central location and conveniently located between Pinner and Hatch End. The property comprises of entrance hall, family bathroom, two bedrooms, master with ensuite shower and a spacious open plan living area leading on to a private balcony.

Location

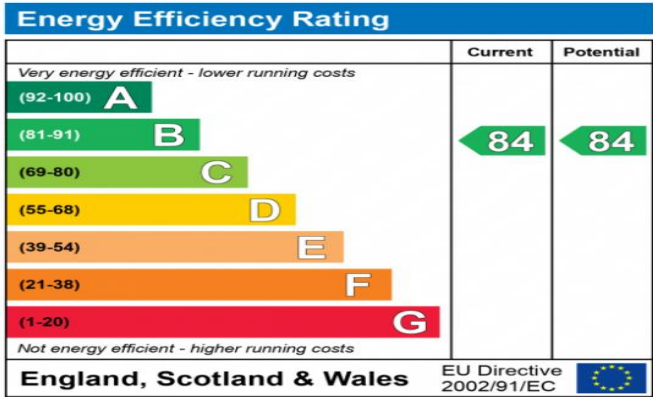
Both Pinner and Hatch End can be found within a few moments from the development offering a variety of boutique shops, restaurants, coffee houses and popular supermarkets. Transport facilities include local bus links, the underground Metropolitan Line at Pinner station and the overground line at Hatch End Station, providing a fast and frequent service into Central London and beyond. The area is also well served for Schooling and recreational facilities.





Additional Information

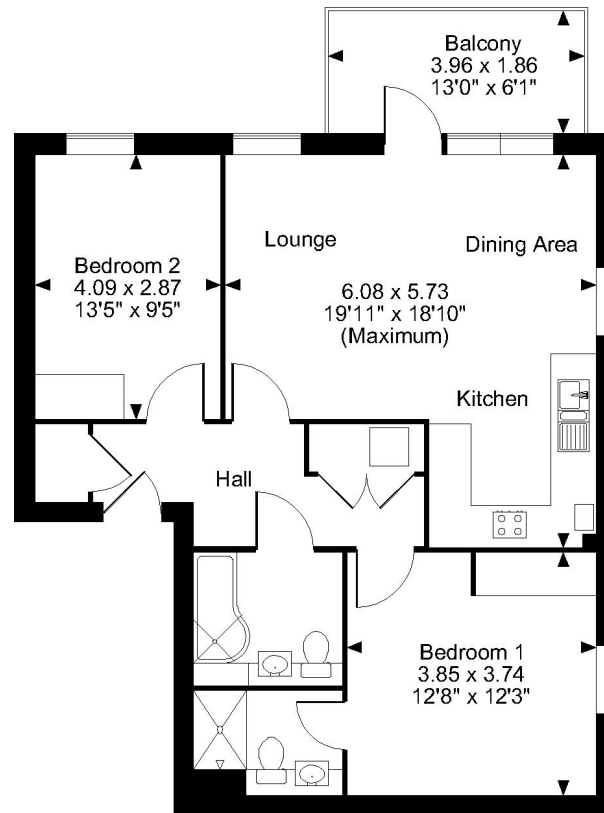
- Local Authority: Harrow
- Council Tax: E
- Energy Efficiency Rating: Band B
- Available Date: 31/03/2023



The energy efficiency rating is a measure of the overall efficiency of a home. The higher the rating the more energy efficient the home is and the lower the fuel bills will be.



Pinner Green, Pinner
Approximate Gross Internal Area
806 Sq Ft/75 Sq M
Balcony external area = 81 Sq Ft/8 Sq M



Flat 15

FOR ILLUSTRATIVE PURPOSES ONLY - NOT TO SCALE

The position & size of doors, windows, appliances and other features are approximate only.
© ehouse. Unauthorised reproduction prohibited. Drawing ref. dig/8478777/SS

