



A two bedroom ground floor apartment set within an exclusive development
Uxbridge Road, Pinner, HA5 3LW

ROBSONS

Asking Price: £1,950 pcm

A two bedroom ground floor apartment set within an exclusive development

Uxbridge Road, Pinner, HA5 3LW

• GATED DEVELOPMENT • TWO BEDROOMS • TWO BATHROOMS • GROUND FLOOR • SECURE ALLOCATED PARKING • VIDEO ENTRY SYSTEM • PRIVATE PATIO & GARDEN • FITTED WARDROBES • UNFURNISHED

Description

A luxury two bedroom, two bathroom ground floor apartment set within an exclusive gated development situated in a commanding central location and conveniently located between Pinner and Hatch End. The property comprises of entrance hallway, master bedroom with fitted wardrobes and ensuite shower room, second double bedroom, family bathroom, modern fitted kitchen and a spacious living room with patio doors leading out to the private patio and garden. The property benefits from underfloor heating throughout and allocated parking for one vehicle.

Location

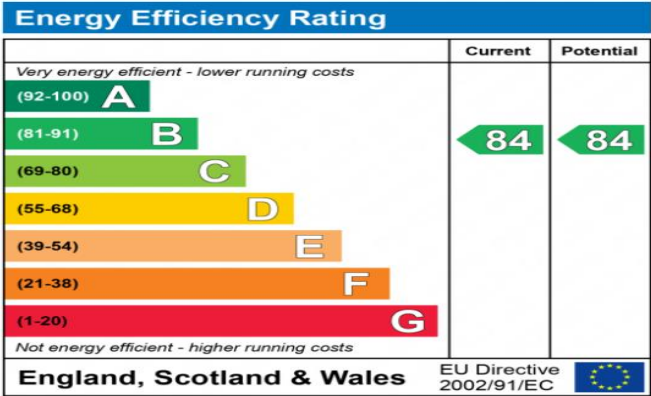
Both Pinner and Hatch End can be found within a few moments from the development offering a variety of boutique shops, restaurants, coffee houses and popular supermarkets. Transport facilities include local bus links, the underground Metropolitan Line at Pinner station and the overground line at Hatch End Station, providing a fast and frequent service into Central London and beyond. The area is also well served for Schooling and recreational facilities.





Additional Information

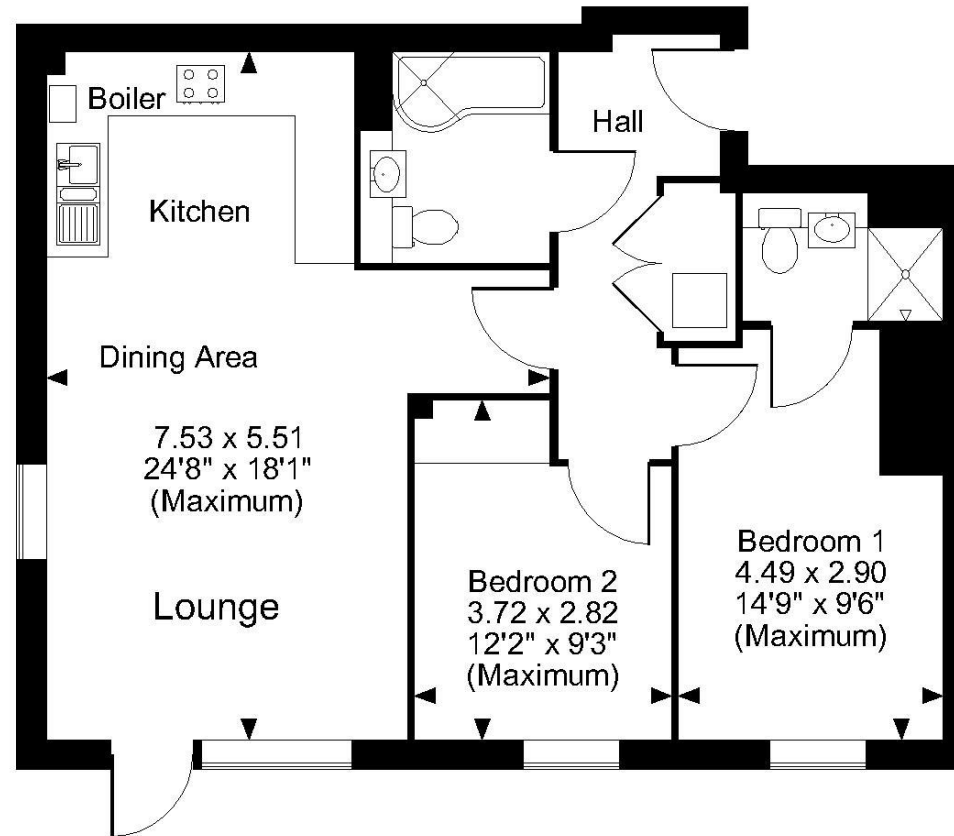
- Local Authority: London Borough of Harrow
- Council Tax Band: E
- Deposit Amount: £2,250.00
- Reservation Payment: One weeks rent
- Energy Efficiency Rating: Band B
- Available Date: 31/03/2025



The energy efficiency rating is a measure of the overall efficiency of a home. The higher the rating the more energy efficient the home is and the lower the fuel bills will be.



Pinner Green, Pinner
Approximate Gross Internal Area
758 Sq Ft/70 Sq M



Flat 3

FOR ILLUSTRATIVE PURPOSES ONLY - NOT TO SCALE

The position & size of doors, windows, appliances and other features are approximate only.

© ehouse. Unauthorised reproduction prohibited. Drawing ref. dig/8478777/SS

ROBSON'S

Middlesex | Hertfordshire | Buckinghamshire



REGISTERED OFFICE 2-4 PACKHORSE ROAD, GERRARDS CROSS, BUCKINGHAMSHIRE, ENGLAND, SL9 7QE. COMPANY NO. 07557114. VAT NO. GB211239453