



A newly refurbished three/four bedroom semi-detached home
The Circuits, Pinner, Middlesex HA5 2BD



Asking Price: £3,500 pcm

A newly refurbished three/four bedroom semi-detached home

The Circuits, Pinner, Middlesex HA5 2BD

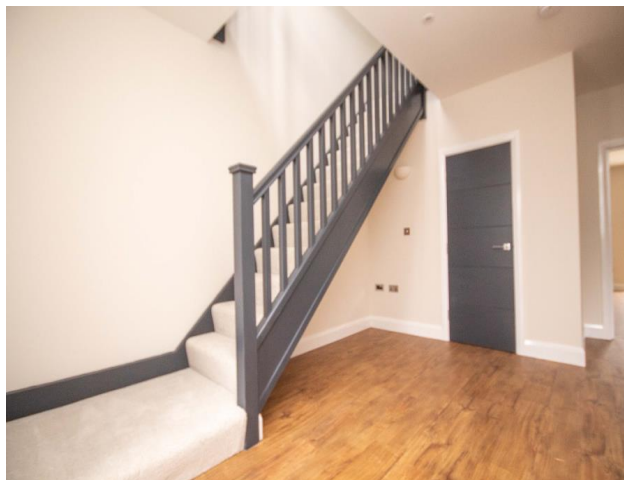
• LARGE ENTRANCE HALL • LIVING ROOM/BEDROOM FOUR • THREE DOUBLE BEDROOMS • THREE BATHROOMS • ATTRACTIVE GARDEN • OFF STREET PARKING • GARAGE • UTILITY ROOM • HIGH SPEC • UNFURNISHED

Description

A newly refurbished three/four bedroom, three bathroom semi-detached home that has been finished to a high standard throughout. To the ground floor there is a large entrance hall, living room/fourth bedroom, utility room, guest cloakroom with a walk-in shower, modern fitted kitchen/dining room with doors to the garden. To the first floor there are three double bedrooms with en-suite and eaves storage space. To the rear of the property there is an attractive rear garden with a patio area. This property is offered with off-street parking for multiple cars and a garage.

Location

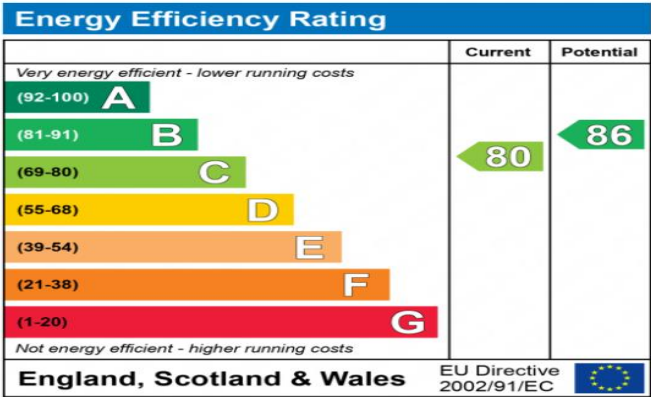
Situated off Cuckoo Hill, this property enjoys a peaceful yet convenient location being within easy reach of Pinner, Northwood Hills and Eastcote, all of which provide a variety of shopping facilities, coffee houses and restaurants. For commuters there are excellent transport links in the area with the Metropolitan line available at Pinner and Northwood Hills station, with Eastcote station offering both the Metropolitan and Piccadilly line. The area is well served by local primary and secondary schooling, children's play areas and recreational facilities.





Additional Information

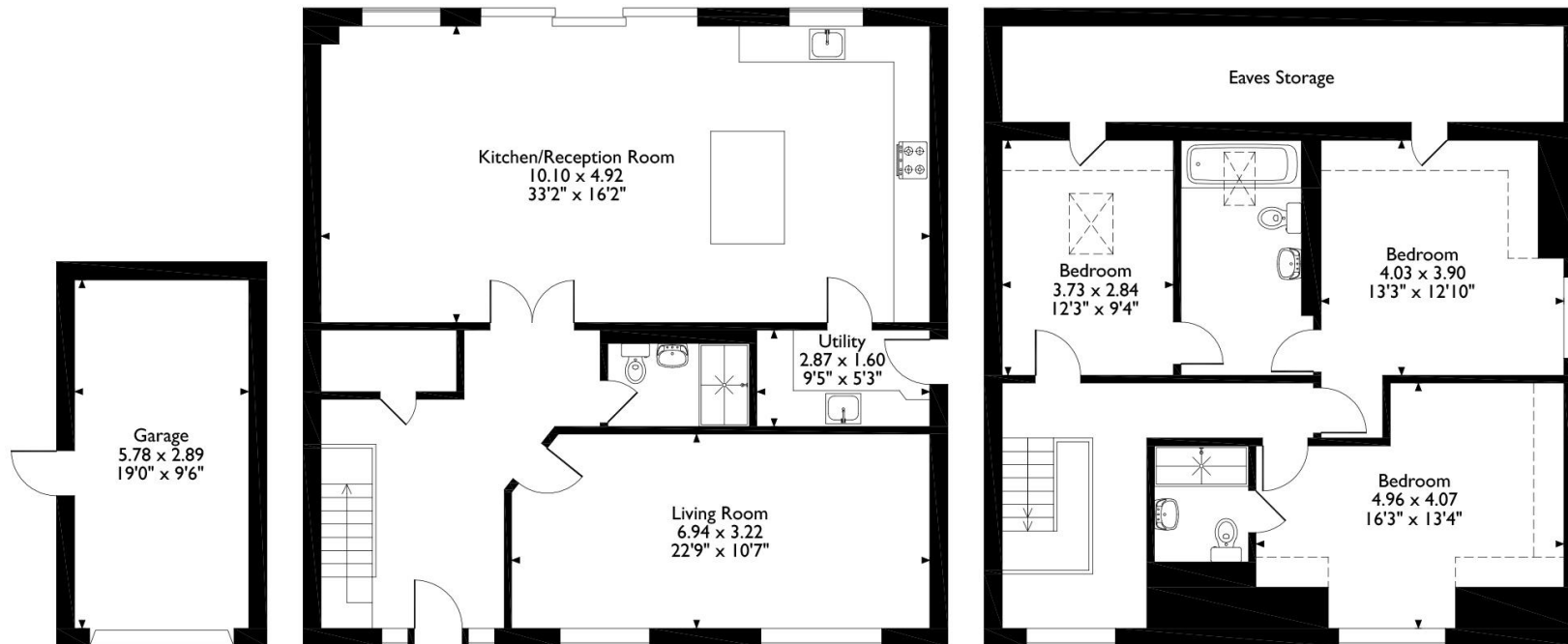
- Local Authority: Harrow
- Council Tax: Band F
- Energy Efficiency Rating: Band C
- Available Date: 13/01/2022



The energy efficiency rating is a measure of the overall efficiency of a home. The higher the rating the more energy efficient the home is and the lower the fuel bills will be.



The Circuits, Pinner
 Approximate Gross Internal Area
 Main House = 163 Sq M/1769 Sq Ft
 Garage = 17 Sq M/180 Sq Ft
 Total = 180 Sq M/1949 Sq Ft



Please note that the location of doors, windows and other items are approximate and this floorplan is to be used for illustrative purposes only. Unauthorized reproduction is prohibited.



REGISTERED OFFICE 2-4 PACKHORSE ROAD, GERRARDS CROSS, BUCKINGHAMSHIRE, ENGLAND, SL9 7QE. COMPANY NO. 07557114. VAT NO. GB211239453