



A well presented two bedroom first floor maisonette
Tolcarne Drive, Pinner, HA5 2DH

ROBSONS

Asking Price: £1,600 pcm

A well presented two bedroom first floor maisonette

Tolcarne Drive, Pinner, HA5 2DH

• ENTRANCE HALLWAY • FITTED KITCHEN • LIVING/DINING ROOM • TWO DOUBLE BEDROOMS • FAMILY BATHROOM • SHARE OF REAR GARDEN • GAS CENTRAL HEATING • UNFURNISHED

Description

A well presented two bedroom first floor maisonette in good decorative condition throughout, the property comprises of entrance hallway, fitted kitchen, living/dining room, family bathroom and two double bedrooms. The property is offered with the share of a private rear garden.

Location

Tolcarne Drive is situated on a popular road located just moments from both Pinner and Northwood Hills amenities, which offer a variety of shops, restaurants, coffee houses and popular supermarkets. Transport facilities include local bus links and the Metropolitan Line at both Pinner and Northwood Hills tube stations, which provide a fast and frequent service into the heart of Central London and beyond. The area is well served for primary and secondary schooling which includes nearby Harlyn primary school and Northwood and Haydon secondary schools, there is also a good selection of children's parks/playgrounds and recreational facilities.

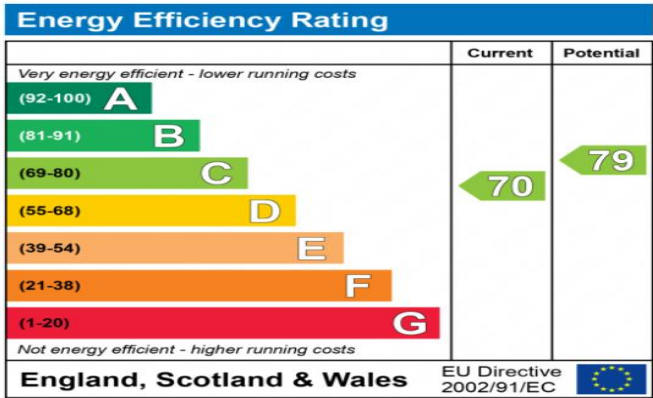




Additional Information

- Local Authority: L.B Hillingdon
- Council Tax Band: D
- Deposit Amount: £1,846.15
- Reservation Payment:
- Energy Efficiency Rating: Band C
- Available Date: 12/09/2025

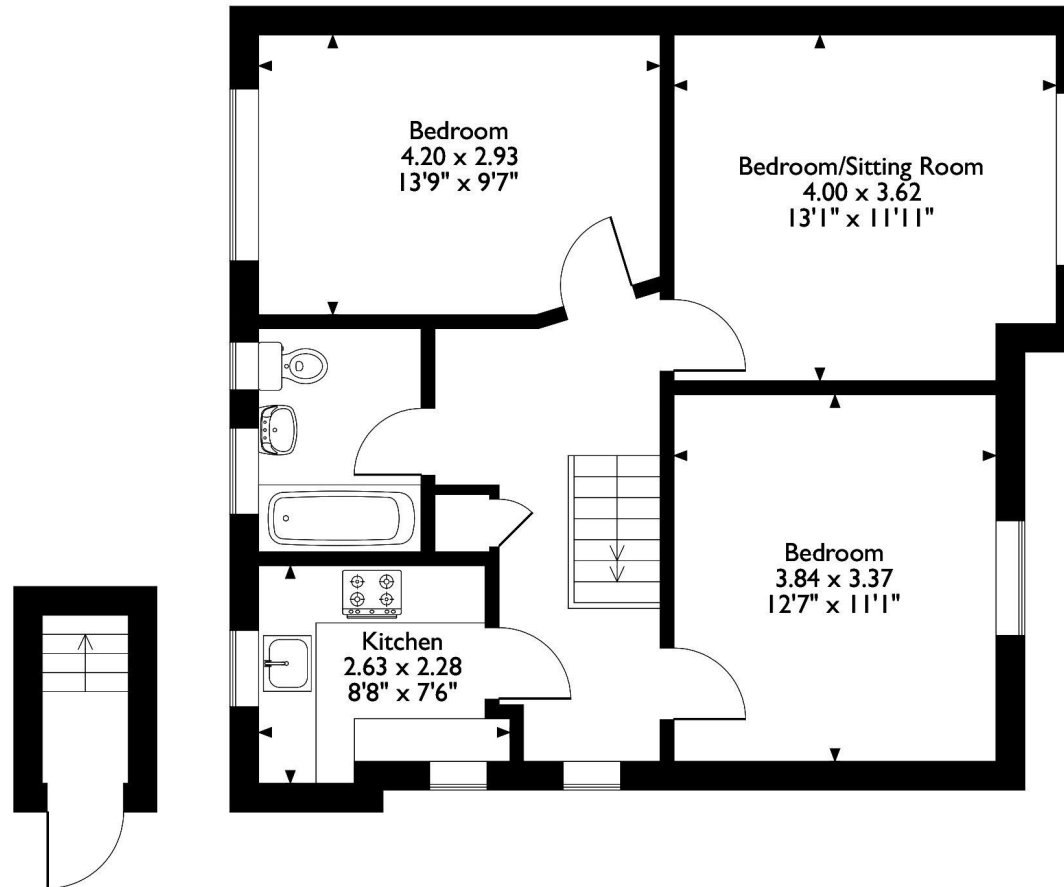
Council Tax Band: D



The energy efficiency rating is a measure of the overall efficiency of a home. The higher the rating the more energy efficient the home is and the lower the fuel bills will be.



Tolcarne Drive, Pinner, Hertfordshire
Approximate Gross Internal Area
63 Sq M/671 Sq Ft



Ground Floor

First Floor Flat

Please note that the location of doors, windows and other items are approximate and this floorplan is to be used for illustrative purposes only. Unauthorized reproduction is prohibited.

