



A bright and spacious four bedroom, four bathroom, detached family home
Drakes Drive, Northwood, HA6 2SL



Asking Price: £3,250 pcm

A bright and spacious four bedroom, four bathroom, detached family home

Drakes Drive, Northwood, HA6 2SL

• LARGE ENTRANCE HALLWAY • MODERN FITTED KITCHEN WITH DINING SPACE • TWO RECEPTIONS ROOMS • GUEST CLOAK ROOM • FOUR BEDROOMS • FOUR BATHROOMS • DRIVEWAY • REAR GARDEN • TWO OUTSIDE STORAGE UNITS • FURNISHED OR UNFURNISHED

Description

A bright and spacious four bedroom, four bathroom, detached family home situated in a quiet cul-de-sac location. The property consists of a spacious entrance and hallway, large lounge/dining room with doors leading to the family sitting room, a modern fitted kitchen and dining area. A guest cloak room with a convenient walk in shower. On the first floor there are three double bedroom with fitted wardrobes, the master and second bedrooms both benefit from ensuite bathrooms, a good size single bedroom with fitted wardrobes and a further family bathroom. The property benefits from ample off street parking via the front driveway and a well-manicured rear garden with two outside storage units.

Location

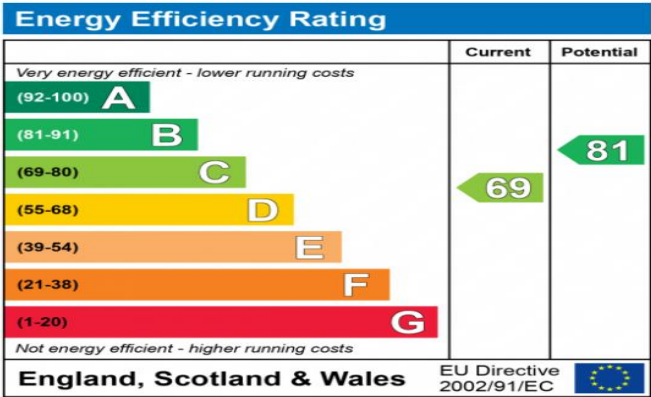
Northwood provides a range of shopping facilities, a Waitrose supermarket, restaurants and the Metropolitan Line Station providing access to Baker Street and the city beyond. The area has a range of both private and state schools. Places of worship and recreational facilities are also well catered for in the surrounding area and major motorway links to M25 and M1 are nearby.





Additional Information

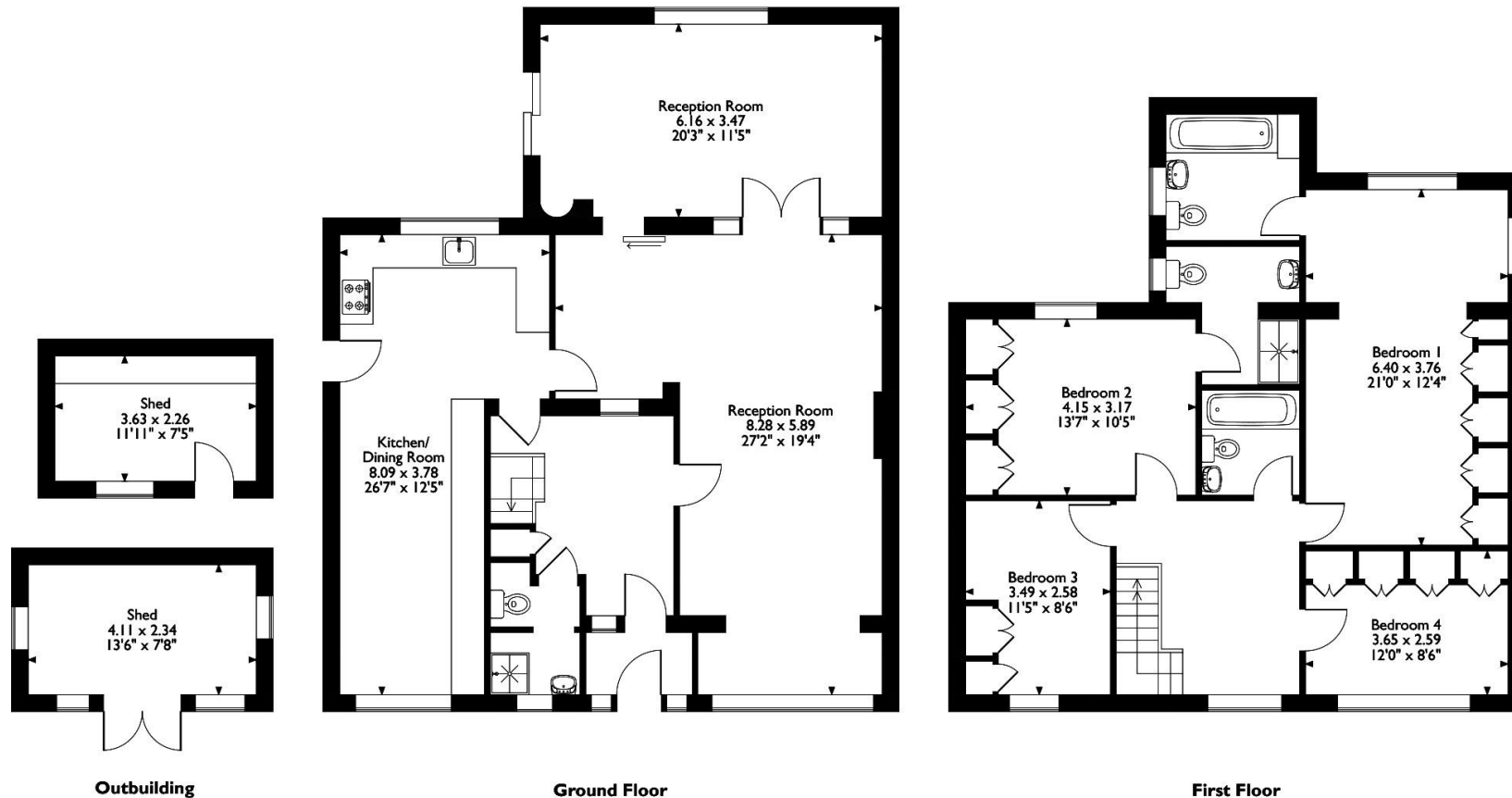
- Local Authority: London Borough of Hillingdon
- Council Tax Band: G
- Energy Efficiency Rating: Band C
- Available Date: 02/08/2021



The energy efficiency rating is a measure of the overall efficiency of a home. The higher the rating the more energy efficient the home is and the lower the fuel bills will be.



Drakes Drive, Northwood
 Approximate Gross Internal Area
 Main House = 188 Sq M/2023 Sq Ft
 Outbuilding = 18 Sq M/191 Sq Ft
 Total = 206 Sq M/2214 Sq Ft



Please note that the location of doors, windows and other items are approximate and this floorplan is to be used for illustrative purposes only. Unauthorized reproduction is prohibited.

