



A two bedroom first floor maisonette with a private garden to the rear  
Tolcarne Drive, Pinner, HA5 2DH

**ROBSONS**

**Asking Price: £1,750 pcm**

## **A two bedroom first floor maisonette with a private garden to the rear**

Tolcarne Drive, Pinner, HA5 2DH

---

• FIRST FLOOR • MODERN KITCHEN • TWO DOUBLE BEDROOMS • RECEPTION ROOM • FAMILY BATHROOM • FRONT & REAR GARDEN • CLOSE TO AMENITIES & TRANSPORT LINKS • FURNISHED OR UNFURNISHED

---

### **Description**

A two bedroom first floor maisonette the accommodation briefly comprises a bright and welcoming reception room with a feature fire place, two generous size double bedrooms, a stylish family bathroom and a modern fitted kitchen with integrated appliances. Externally the property benefits from a share of the front and private rear garden.

**\*\* An advance reservation payment of one weeks rent is required to secure the property \*\***

### **Location**

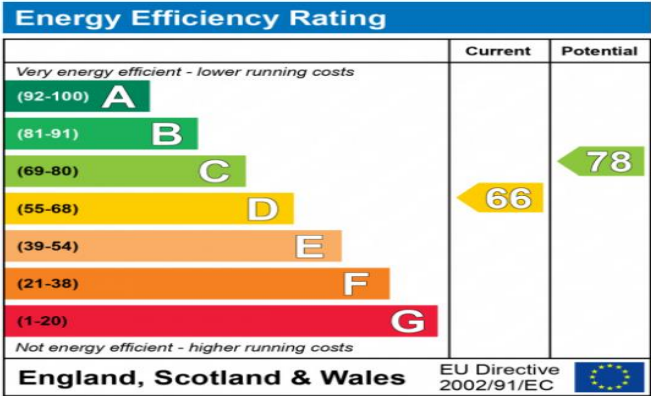
Located off Joel Street within walking distance of Northwood Hills High street and the local amenities. There are excellent transport facilities close by with the Metropolitan line available at Northwood Hills station, as well as numerous local bus routes. Alternatively, Eastcote and Pinner high streets are just a short distance away. The area is well served by primary and secondary schooling, childrens play areas and recreational facilities.





### Additional Information

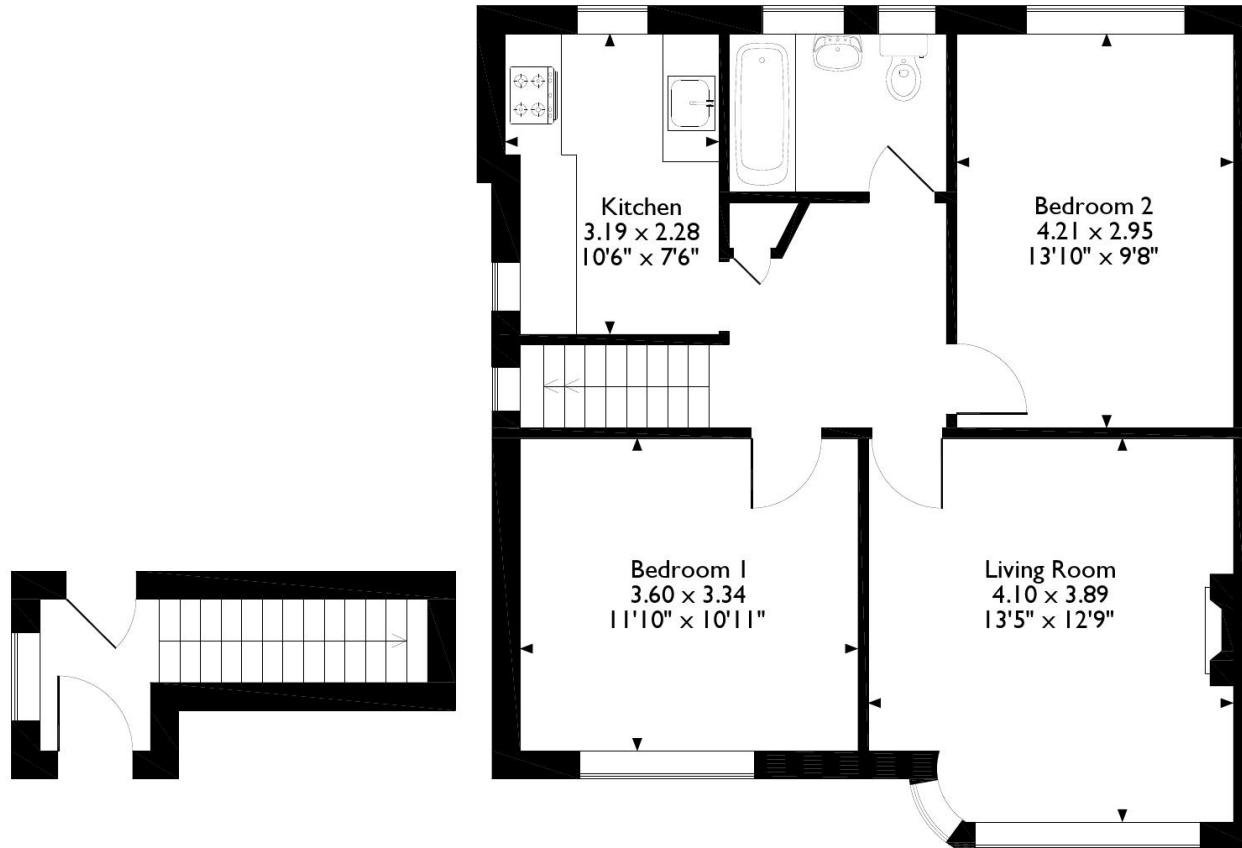
- Local Authority: Hillingdon
- Council Tax Band: D
- Deposit Amount: £1,961.00
- Reservation Payment: One weeks rent
- Energy Efficiency Rating: Band D
- Available Date: 19/05/2025



The energy efficiency rating is a measure of the overall efficiency of a home. The higher the rating the more energy efficient the home is and the lower the fuel bills will be.



Tolcarne Drive, Pinner  
Approximate Gross Internal Area  
66 Sq M/703 Sq Ft



### Ground Floor

### First Floor

Please note that the location of doors, windows and other items are approximate and this floorplan is to be used for illustrative purposes only. Unauthorized reproduction is prohibited.



REGISTERED OFFICE 2-4 PACKHORSE ROAD, GERRARDS CROSS, BUCKINGHAMSHIRE, ENGLAND, SL9 7QE. COMPANY NO. 07557114. VAT NO. GB211239453