



A beautiful two bedroom apartment set in Grand Regency House
Loudwater House, Rickmansworth, WD3 4HN

ROBSONS

Asking Price: £2,050 pcm

A beautiful two bedroom apartment set in Grand Regency House

Loudwater House, Rickmansworth, WD3 4HN

• PRIVATE GATED ESTATE • FIRST FLOOR • TWO DOUBLE BEDROOMS • LUXURY BATHROOM SUITE • BESPOKE KITCHEN WITH GAGGENAU APPLIANCES • MASTER BEDROOM AND GUEST BEDROOM • PART FURNISHED

Description

This beautiful two bedroom apartment forms part of Loudwater House, a Regency property within the private gated Loudwater Estate.

This immaculate apartment has been renovated to a high specification, creating a modern contemporary feel whilst retaining many original features. Boasting 900 sqft of living space arranged over two floors, this property provides a stunning bespoke kitchen with Gaggenau appliances, a bright lounge with double doors leading to the sun terrace, principal bedroom, second bedroom, luxury bathroom suite and a guest cloakroom.

PERSONAL INTEREST We hereby disclose that a Personal Interest exists which constitutes a Declarable Interest under the Estate Agents Act 1979.

Location

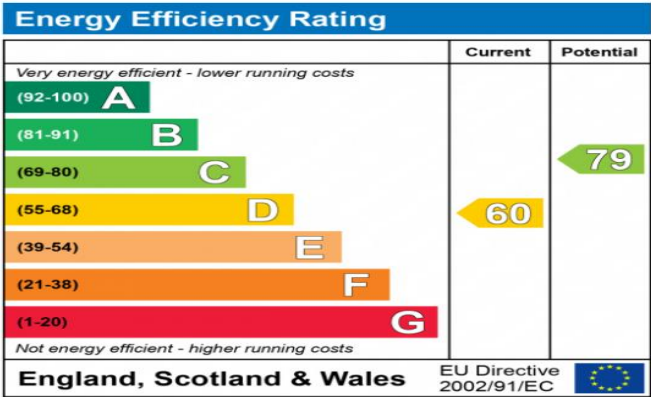
Loudwater is within reach of both Rickmansworth and Chorleywood. The Metropolitan and main line railway services to Baker Street and Marylebone are available from both Rickmansworth and Chorleywood stations. The M25's junctions 17 and 18 are nearby. The area is well served for good quality private and state schools for all ages.





Additional Information

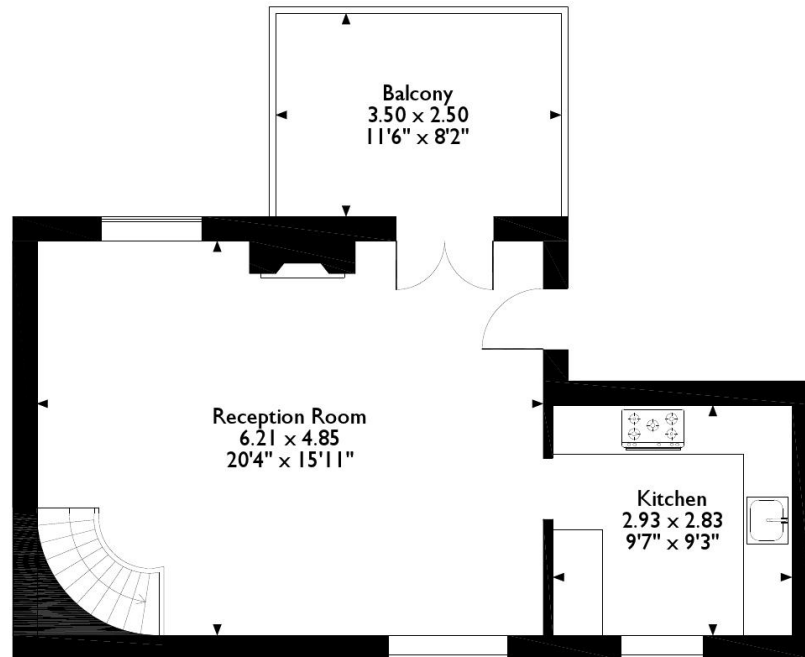
- Local Authority: Three Rivers District Council
- Council Tax Band: E
- Energy Efficiency Rating: Band D
- Available Date: 12/10/2022



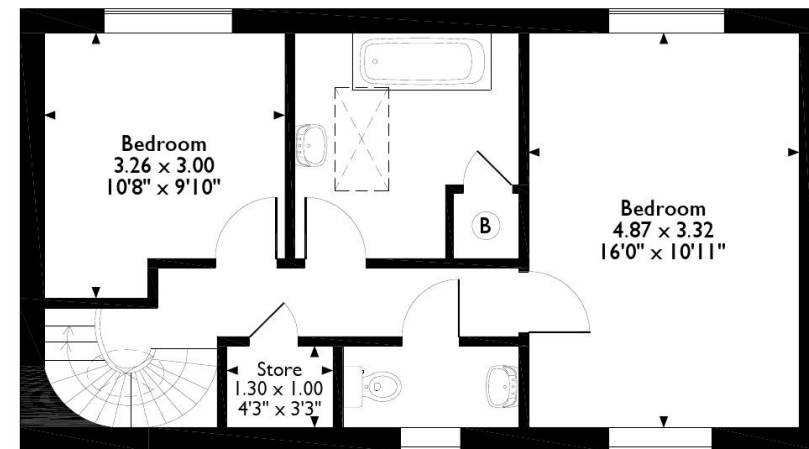
The energy efficiency rating is a measure of the overall efficiency of a home. The higher the rating the more energy efficient the home is and the lower the fuel bills will be.



Loudwater House, Loudwater Drive Loudwater, Rickmansworth
Approximate Gross Internal Area
84 Sq M/900 Sq Ft



Ground Floor



First Floor

Please note that the location of doors, windows and other items are approximate and this floorplan is to be used for illustrative purposes only. Unauthorized reproduction is prohibited.

