



A luxurious three bedroom two bathroom ground floor apartment  
Maxwell Road, Northwood, HA6 2YF

**ROBSONS**

**Asking Price: £3,250 pcm**

## **A luxurious three bedroom two bathroom ground floor apartment**

Maxwell Road, Northwood, HA6 2YF

---

• GROUND FLOOR • THREE BEDROOMS • TWO BATHROOMS • KITCHEN • DINING ROOM • UTILITY CUPBOARD • ADDITIONAL W/C • PRIVATE PATIO • TWO PARKING SPACES • PART FURNISHED

---

### **Description**

A luxurious three bedroom two bathroom ground floor apartment located in the heart of Northwood. The accommodation briefly comprises of a spacious sitting room with doors leading to an outside private patio. The Kitchen is fitted with a range of modern units with integrated appliances leading to a circular dining area overlooking the private patio. The master bedroom is fitted with a modern ensuite bathroom and large dressing room, there are two further double bedrooms both with access to the Jack and Jill style ensuite bathroom. The property also provides plenty of internal storage, a separate lavatory and air conditioning. The property is offered part furnished and benefits from allocated parking both underground and at ground level.

**\*\* A holding deposit of £750 is required to secure this property, this is equivalent to one weeks rent\*\***

### **Location**

Northwood provides a range of shopping facilities, a Waitrose supermarket, restaurants and the Metropolitan Line Station providing access to Baker Street and the city beyond. The area has a range of both private and state schools. Places of worship and recreational facilities are also well catered for in the surrounding area and major motorway links to M25 and M1 are nearby.

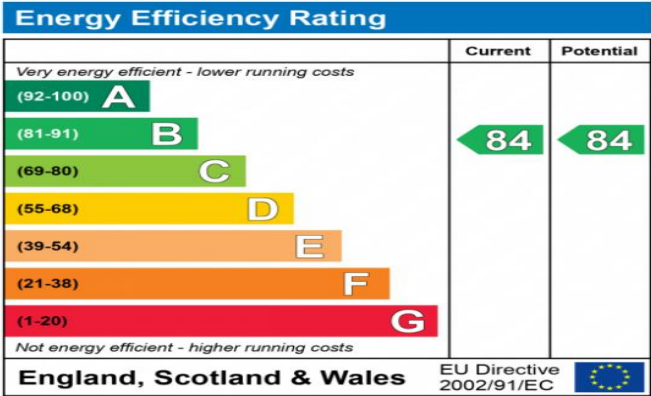






### Additional Information

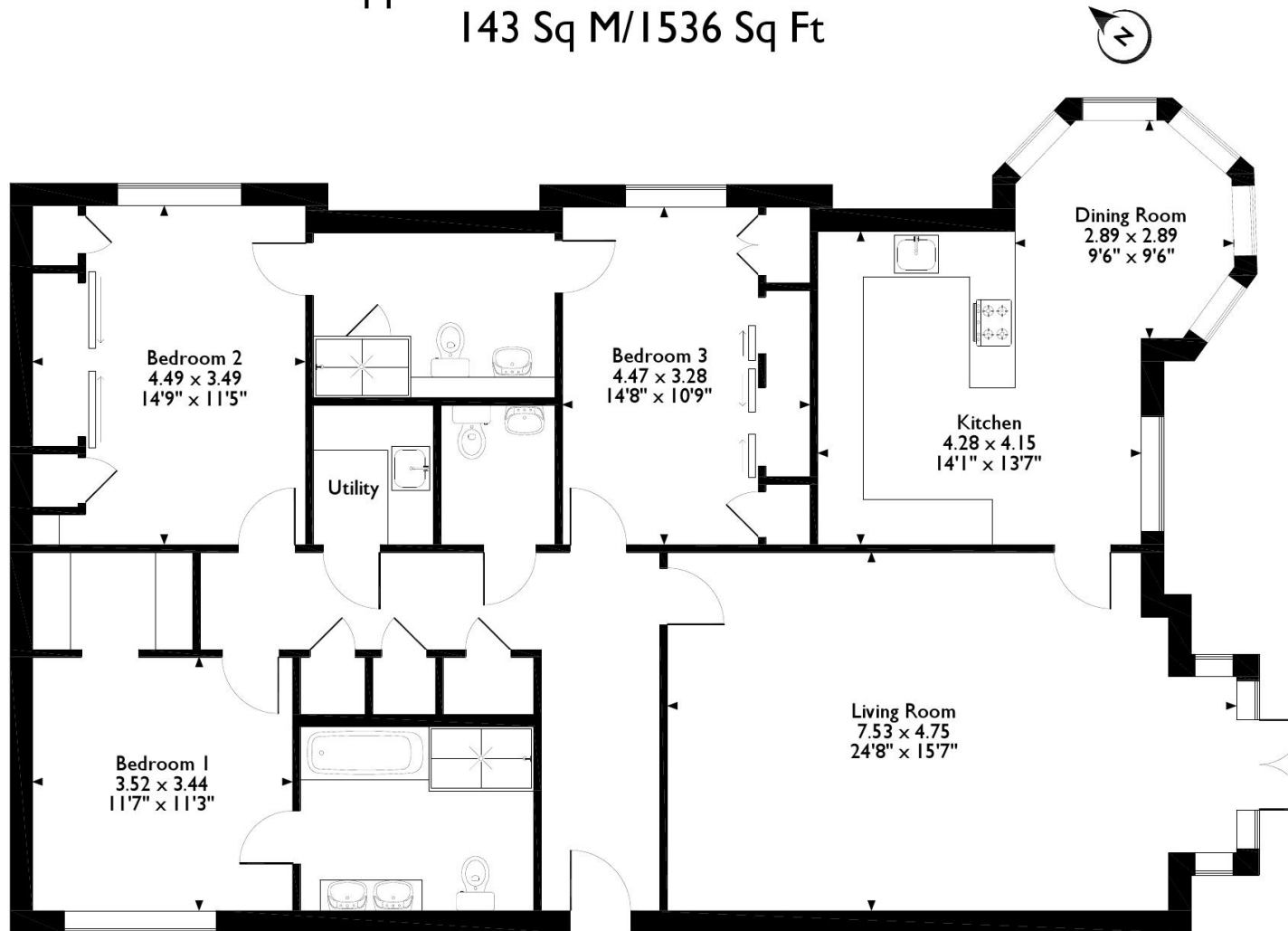
- Local Authority: London Borough of Hillingdon
- Council Tax Band: G
- Deposit Amount: £3,750.00
- Reservation Payment: One weeks rent
- Energy Efficiency Rating: Band B
- Available Date: 07/08/2023



The energy efficiency rating is a measure of the overall efficiency of a home. The higher the rating the more energy efficient the home is and the lower the fuel bills will be.



Pinnacle Apartments 6 Maxwell Road, Northwood  
Approximate Gross Internal Area  
143 Sq M/1536 Sq Ft



Please note that the location of doors, windows and other items are approximate and this floorplan is to be used for illustrative purposes only. Unauthorized reproduction is prohibited.

