



A rarely available three double bedroom ground floor apartment
Eastbury Avenue, Northwood, HA6 3LL



Asking Price: £2,050 pcm

A rarely available three double bedroom ground floor apartment

Eastbury Avenue, Northwood, HA6 3LL

• GROUND FLOOR FLAT • EXCLUSIVE GATED DEVELOPMENT • KITCHEN • RECEPTION ROOM • THREE DOUBLE BEDROOMS • TWO BATHROOMS • SEPARATE W.C • DOUBLE GLAZING • TWO ALLOCATED PARKING SPACES • COMMUNAL GARDENS WITH PRIVATE PATIO • UNFURNISHED

Description

A rarely available three double bedroom ground floor apartment offered in excellent decorative order throughout. The property consists of three double bedrooms, two of which benefit from ensuite bathrooms and fitted wardrobes, a large living room with access to private patio overlooking the well-manicured communal gardens, a spacious and modern fitted kitchen with appliances and plenty of useful hallway storage space. The apartment is set within an exclusive gated development with off street parking for 2 vehicles, communal gardens and secure communal entrance. Positioned on a sought after residential road conveniently located within a mile of Northwood town centre and within easy reach Northwood Nato HQ.

Location

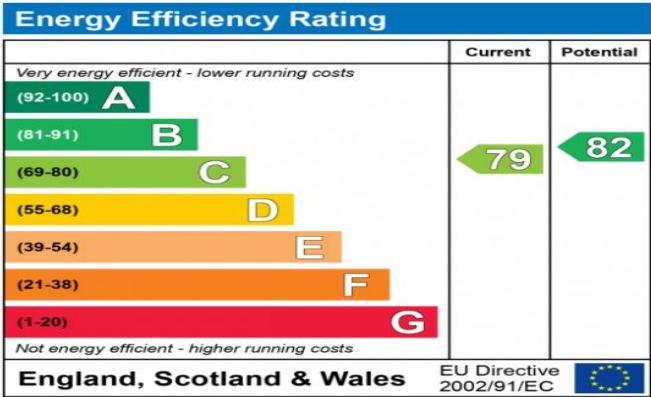
Northwood provides a range of shopping facilities, a Waitrose supermarket, restaurants and the Metropolitan Line Station providing access to Baker Street and the city beyond. The area has a range of both private and state schools. Places of worship and recreational facilities are also well catered for in the surrounding area.





Additional Information

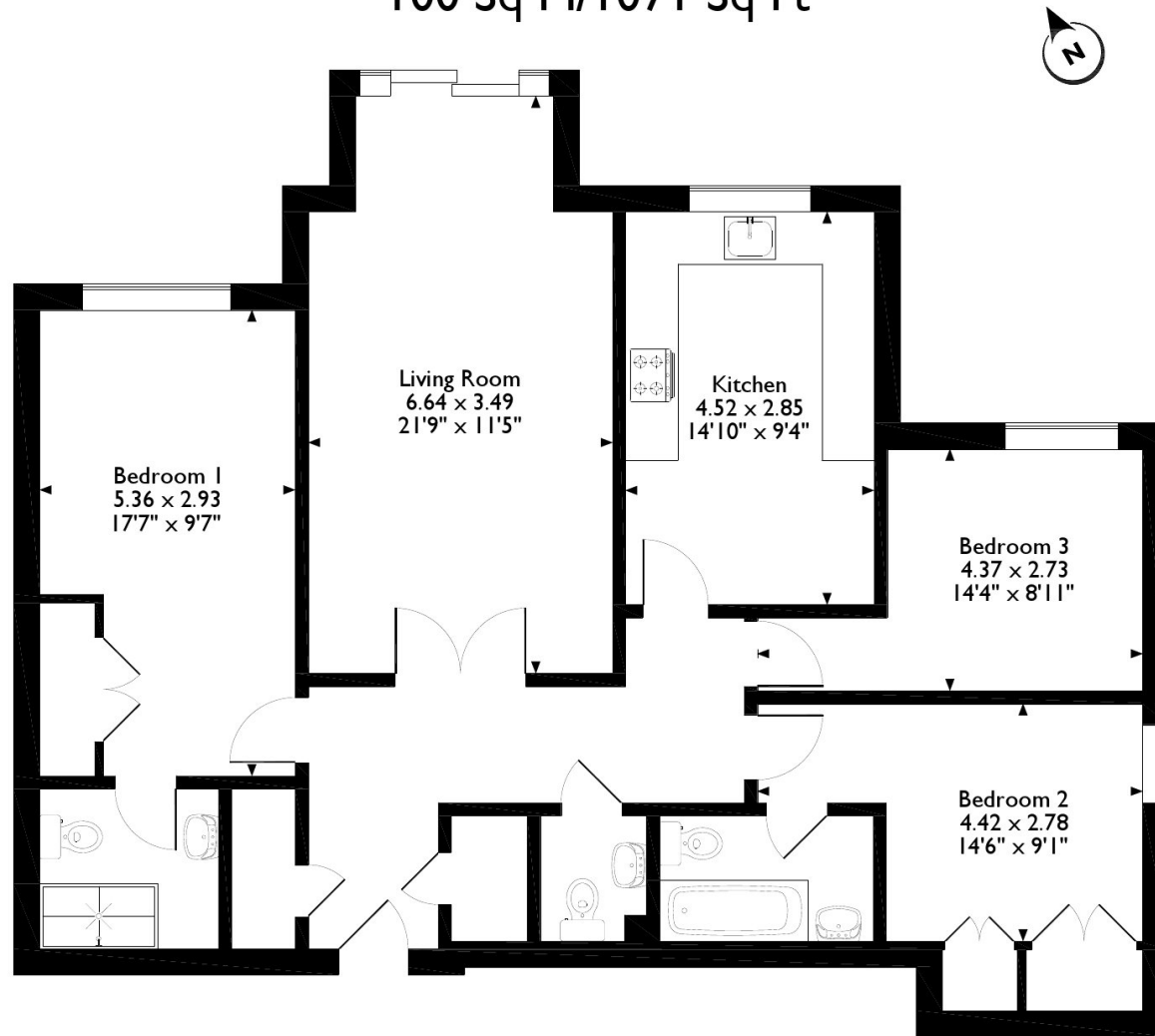
- Local Authority: Three Rivers District Council
- Council Tax: Band F
- Energy Efficiency Rating: Band C
- Available Date: 03/02/2023



The energy efficiency rating is a measure of the overall efficiency of a home. The higher the rating the more energy efficient the home is and the lower the fuel bills will be.



Maplewood Court, Flat 2, 31, Eastbury Avenue, Northwood
Approximate Gross Internal Area
100 Sq M/1071 Sq Ft



Please note that the location of doors, windows and other items are approximate and this floorplan is to be used for illustrative purposes only. Unauthorized reproduction is prohibited.



REGISTERED OFFICE 2-4 PACKHORSE ROAD, GERRARDS CROSS, BUCKINGHAMSHIRE, ENGLAND, SL9 7QE. COMPANY NO. 07557114. VAT NO. GB211239453